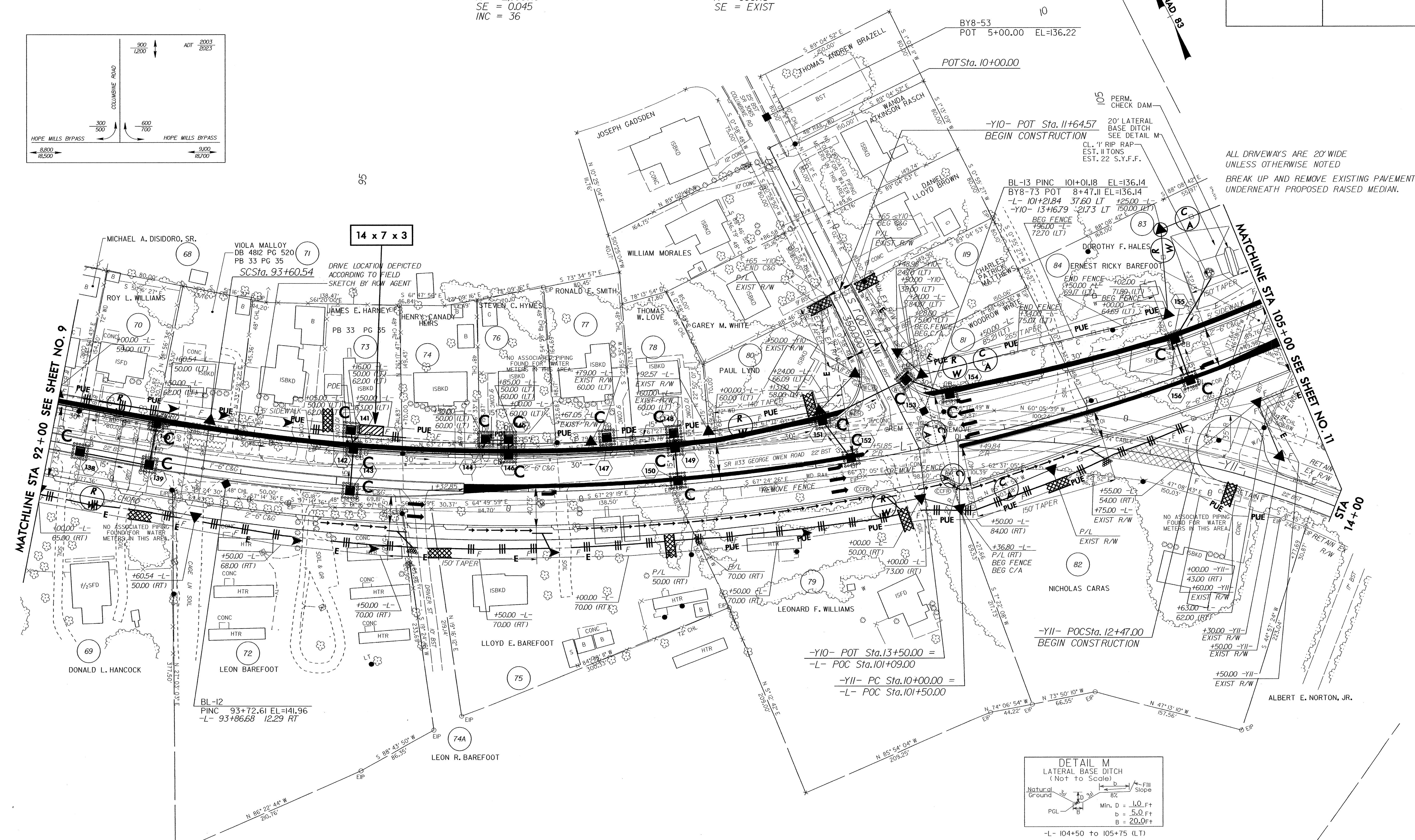
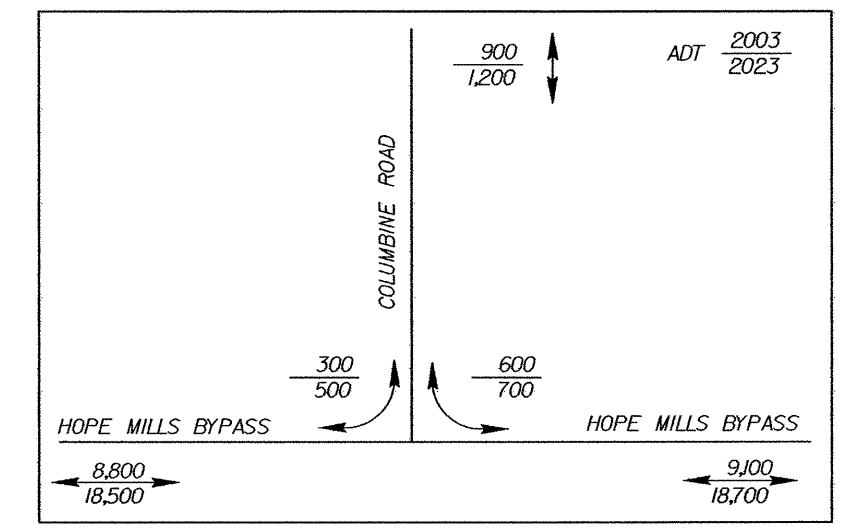


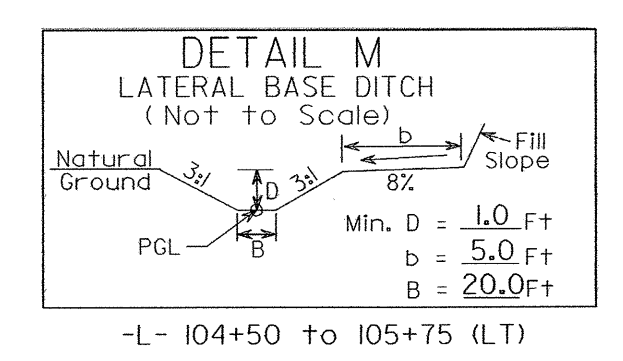
PROJECT REFERENCE NO.	SHEET NO.
U-0620	EC-34/CONST.10
RW SHEET NO.	
ROADWAY DESIGN ENGINEER	HYDRAULICS ENGINEER

SEE SHEET 28 FOR -L- PROFILE  
 SEE SHEET 35 FOR -Y10- PROFILE  
 SEE SHEET 36 FOR -Y11- PROFILE

<p>-L-</p> <p>Pls Sta 93+06.55  <math>\Delta s = 2'13"39.0"</math>  <math>Ls = 162.00'</math>  <math>LT = 108.01'</math>  <math>ST = 54.01'</math></p>	<p>-Y10-</p> <p>Pls Sta 101+99.17  <math>\Delta = 43'51"02.9" (LT)</math>  <math>D = 2'45"00.0"</math>  <math>L = 1594.57'</math>  <math>R = 2,083.48'</math>  <math>SE = 0.045</math>  <math>INC = 36</math></p>	<p>-Y11-</p> <p>Pls Sta 110+09.13  <math>\Delta s = 2'13"39.0"</math>  <math>Ls = 162.00'</math>  <math>LT = 108.01'</math>  <math>ST = 54.01'</math></p>	<p>-Y11-</p> <p>Pls Sta 12+55.38  <math>\Delta = 28'45"00.0" (RT)</math>  <math>D = 5'45"00.0"</math>  <math>L = 500.00'</math>  <math>T = 255.38'</math>  <math>R = 996.45'</math>  <math>SE = EXIST</math></p>
--	---	---	--



ALL DRIVEWAYS ARE 20' WIDE UNLESS OTHERWISE NOTED  
 BREAK UP AND REMOVE EXISTING PAVEMENT UNDERNEATH PROPOSED RAISED MEDIAN.



- 5' MONOLITHIC ISLAND (KEYED IN) & SIDEWALK
- PAINT STRIPED LANE CLOSURE
- PAVEMENT REMOVAL