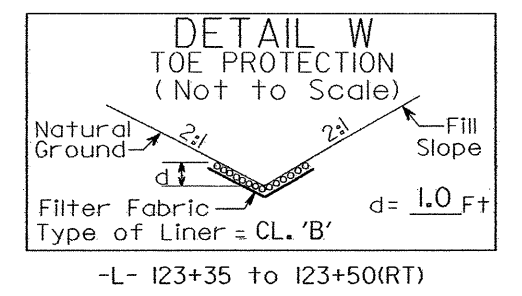
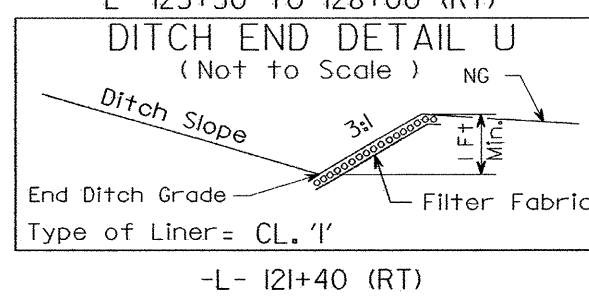
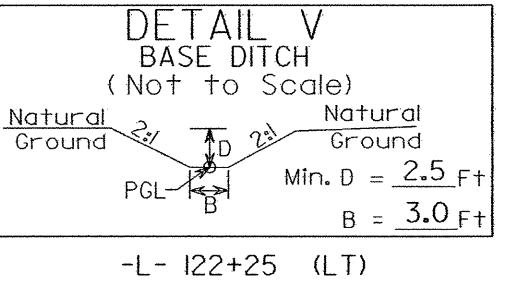
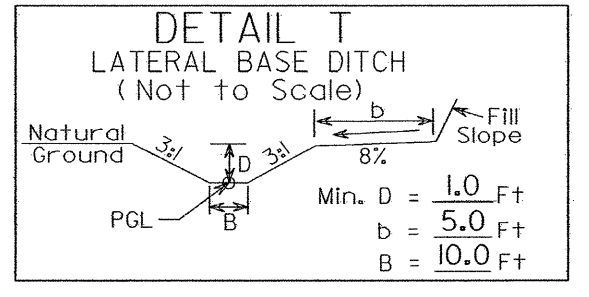
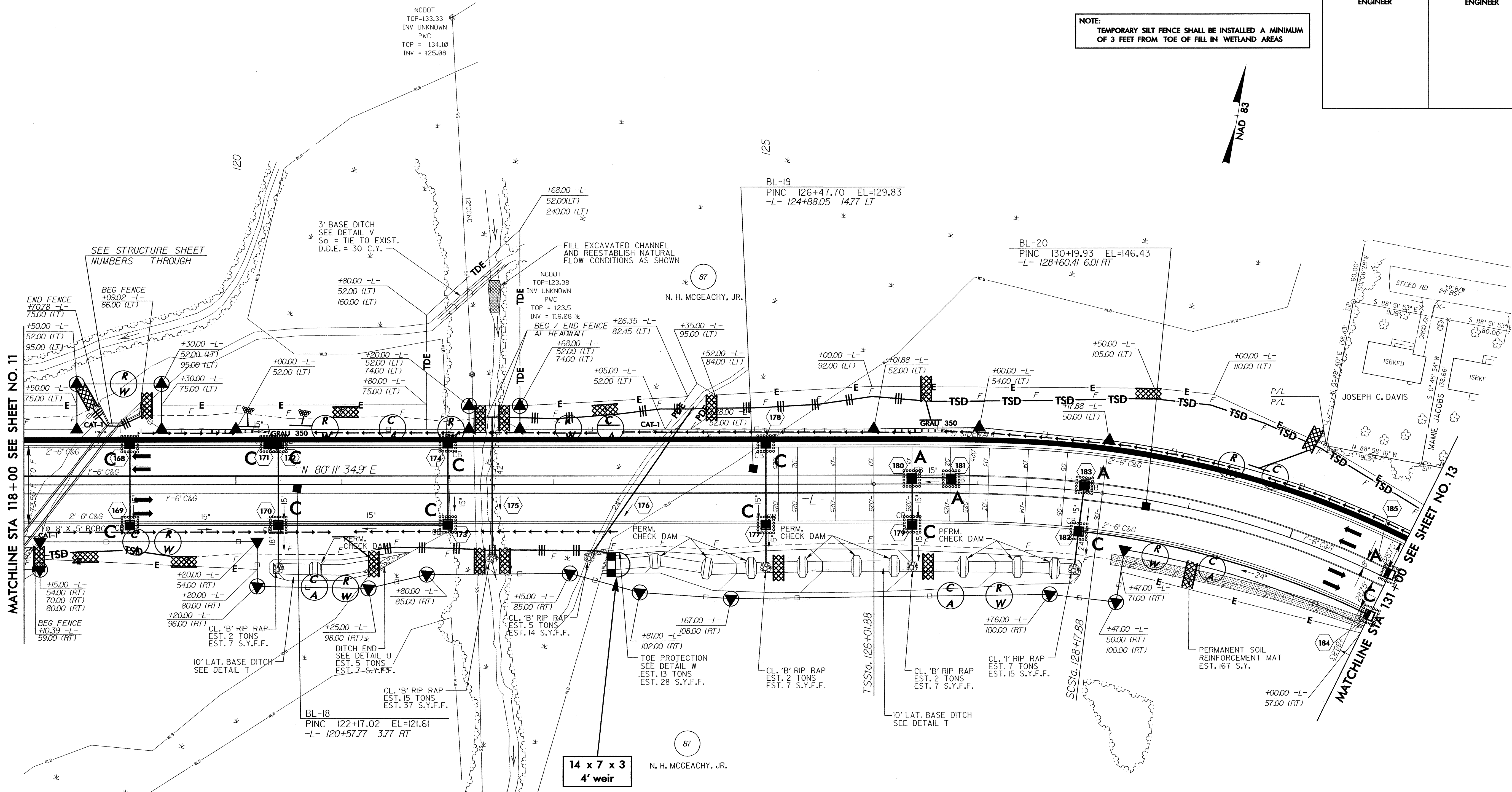
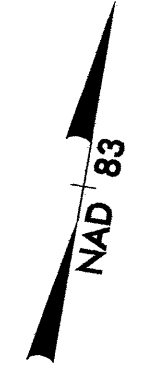


PROJECT REFERENCE NO.		SHEET NO.	
U-0620		EC-36/CONST.12	
RW SHEET NO.			
ROADWAY DESIGN ENGINEER		HYDRAULICS ENGINEER	

SEE SHEET 29 FOR -L- PROFILE
ALL DRIVEWAYS ARE 20' WIDE
UNLESS OTHERWISE NOTED

NOTE:
TEMPORARY SILT FENCE SHALL BE INSTALLED A MINIMUM OF 3 FEET FROM TOE OF FILL IN WETLAND AREAS



-L-

Pls Sta 127+46.00	Pls Sta 130+57.52	Pls Sta 133+57.12
Os = 7° 17' 24.0"	Δ = 31° 31' 53.1" (RT)	Os = 7° 17' 24.0"
Ls = 216.00'	D = 6' 45' 00.0"	Ls = 216.00'
LT = 144.12'	L = 467.13'	LT = 144.12'
ST = 72.11'	T = 239.64'	ST = 72.11'
	R = 848.83'	
	SE = 0.060	
	INC = 36	

5' MONOLITHIC ISLAND (KEYED IN) & SIDEWALK
 PAINT STRIPED LANE CLOSURE
 PAVEMENT REMOVAL