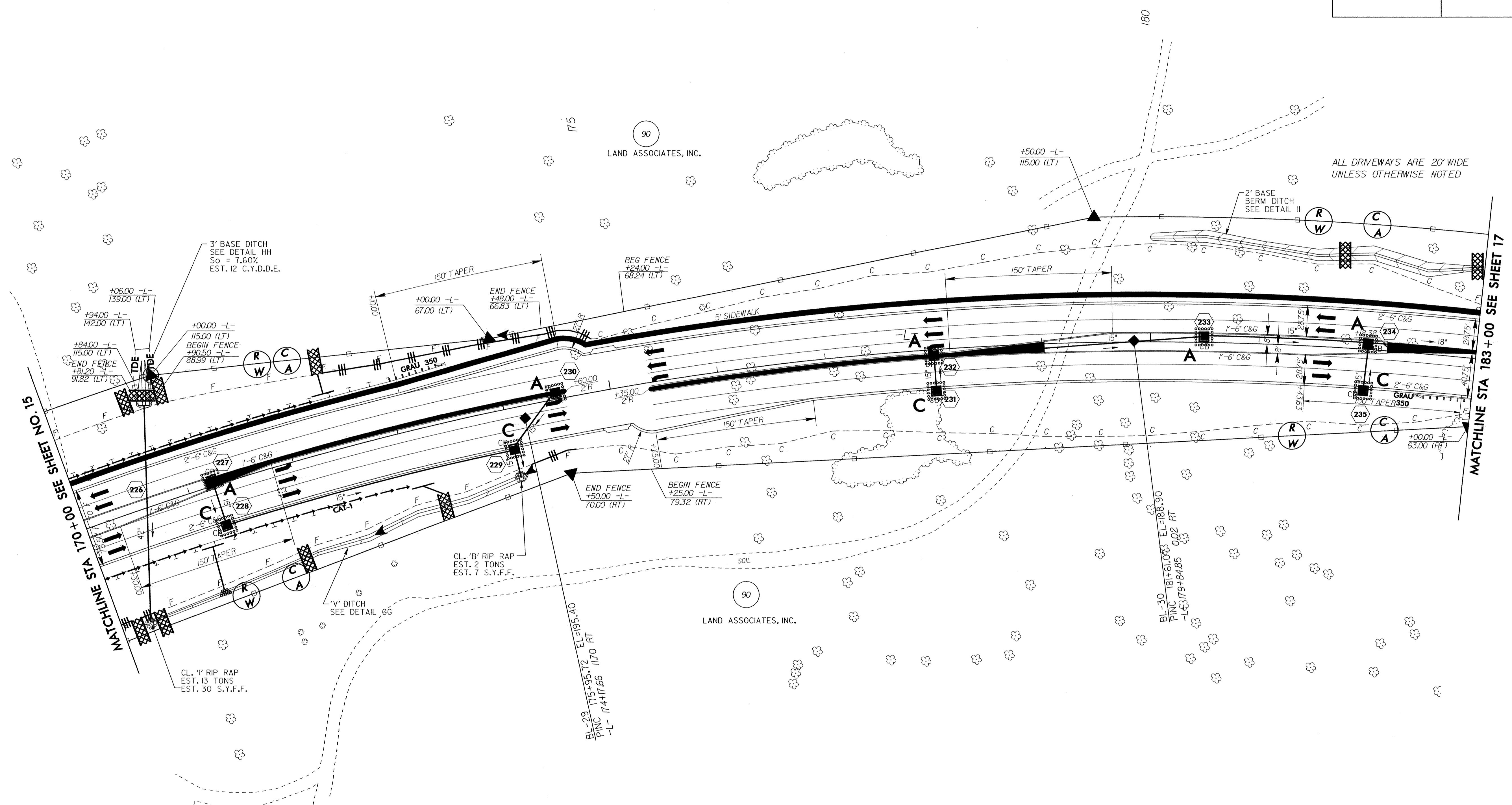
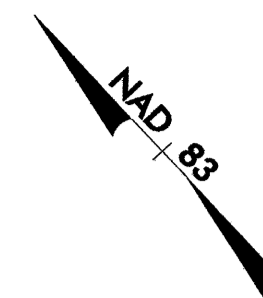


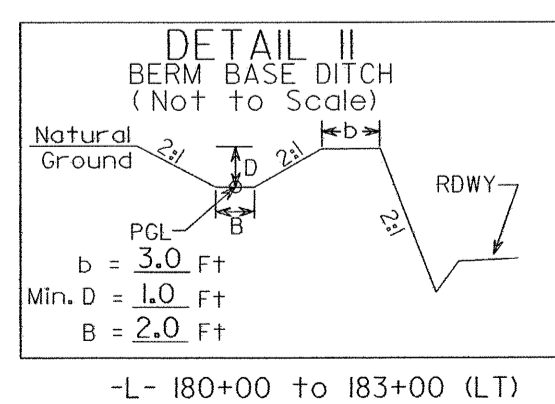
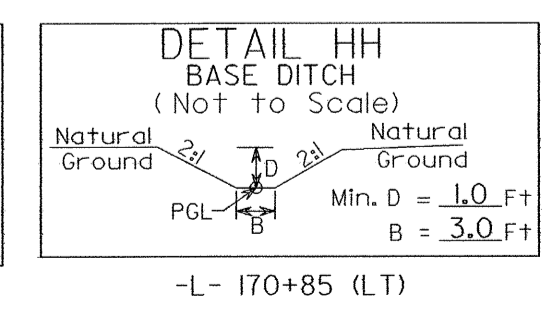
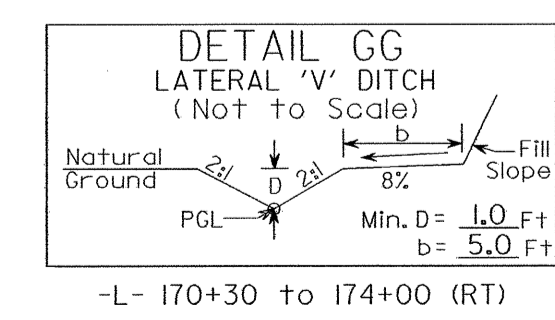
SEE SHEET 31 FOR -L- PROFILE

PROJECT REFERENCE NO. U-0620	SHEET NO. EC-40/CONST.16
RW SHEET NO.	
ROADWAY DESIGN ENGINEER	HYDRAULICS ENGINEER



-L-

Pls Sta 157+68.32 $\Theta s = 1' 45' 00.0''$ $L s = 175.00'$ $L T = 116.67'$ $S T = 58.34'$	Pls Sta 172+07.60 $\Delta = 5' 28' 19.8'' (RT)$ $D = 2' 00' 00.0''$ $L = 2,573.61'$ $T = 1,380.95'$ $R = 2,864.79'$ $SE = 0.035$ $INC = 50$	Pls Sta 184+58.60 $\Theta s = 1' 45' 00.0''$ $L s = 175.00'$ $L T = 116.67'$ $S T = 58.34'$
---	--	---



5' MONOLITHIC ISLAND (KEYED IN) & SIDEWALK
 PAINT STRIPED LANE CLOSURE
 PAVEMENT REMOVAL