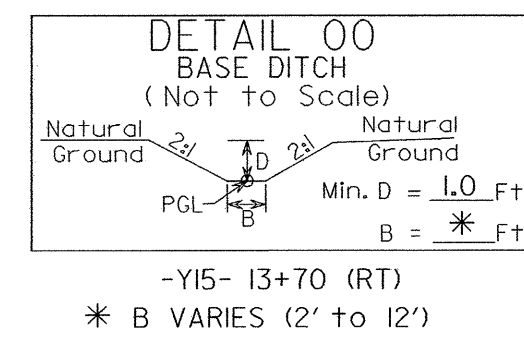
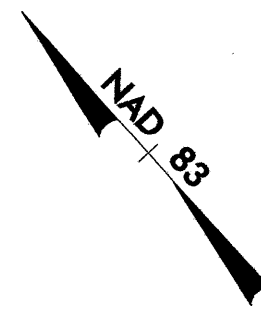
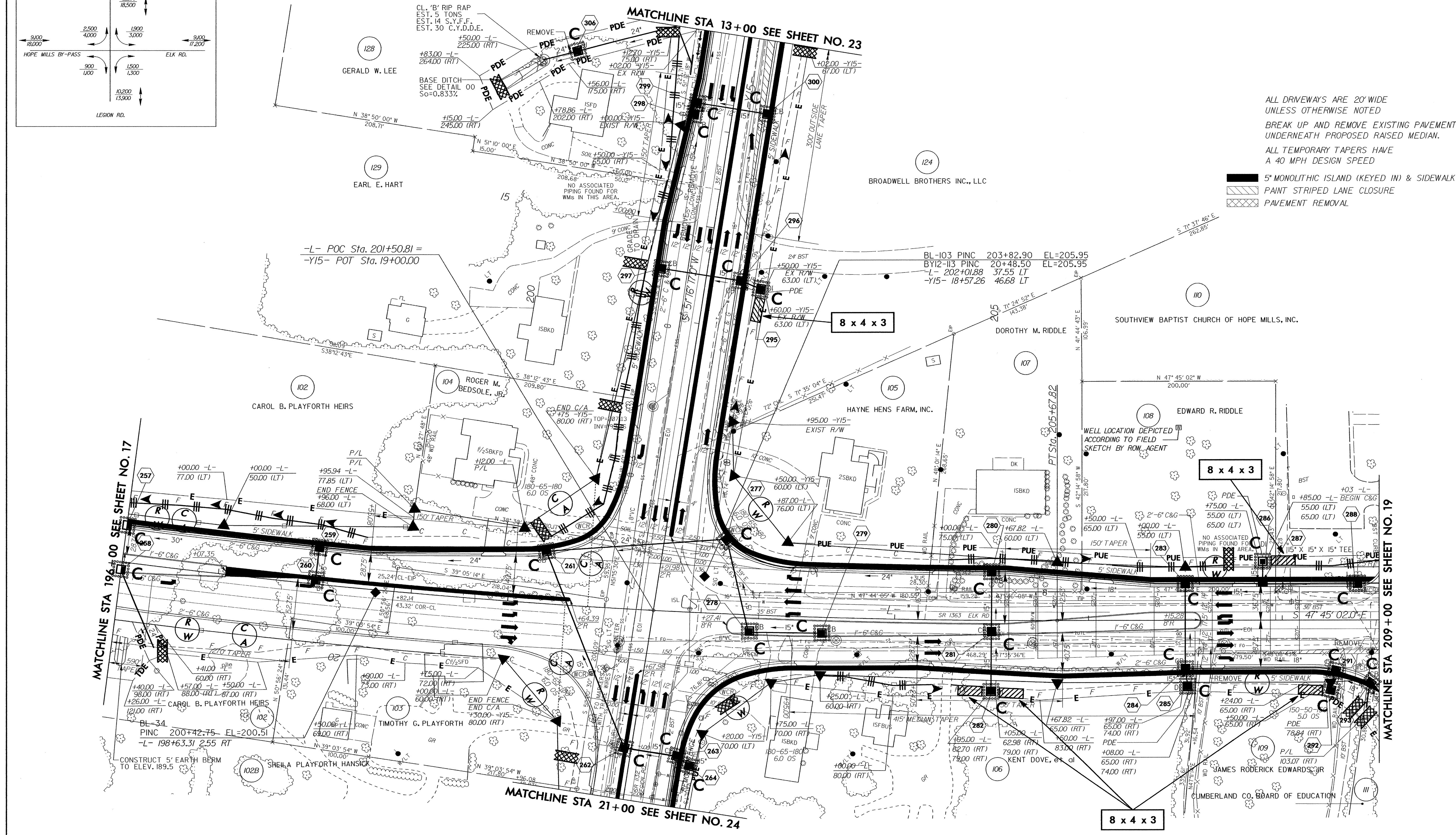
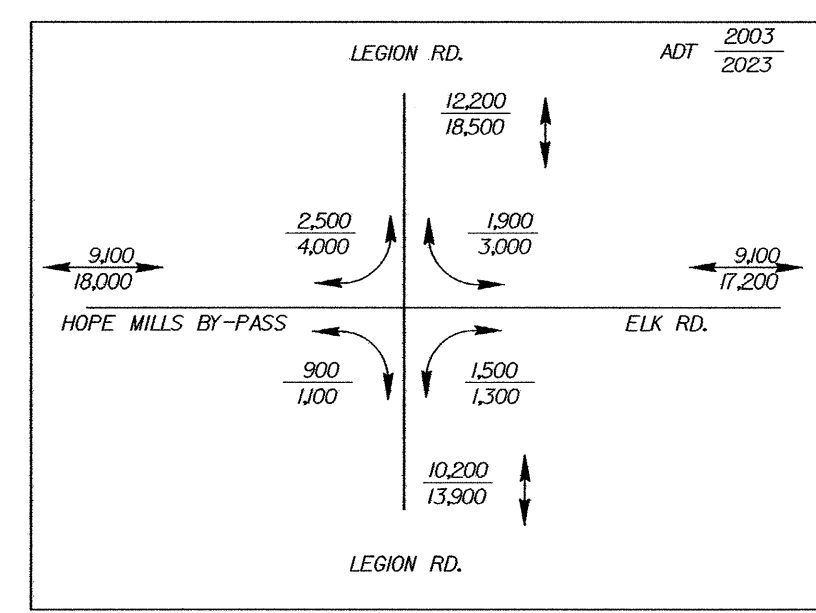


PROJECT REFERENCE NO.		SHEET NO.	
U-0620		EC-42/CONST.18	
RW SHEET NO.			
ROADWAY DESIGN ENGINEER		HYDRAULICS ENGINEER	

SEE SHEET 32 FOR -L- PROFILE
SEE SHEET 38 FOR -Y15- PROFILE



-L-
PI Sta 198+78.96
 $\Delta = 10' 21' 40.7$ (LT)
 $D = 0' 45' 00.0$
 $L = 1,381.49$
 $T = 692.63$
 $R = 7,639.44$
 $SE = 0.025$
 $INC = 50$



ALL DRIVEWAYS ARE 20' WIDE UNLESS OTHERWISE NOTED
BREAK UP AND REMOVE EXISTING PAVEMENT UNDERNEATH PROPOSED RAISED MEDIAN.
ALL TEMPORARY TAPERS HAVE A 40 MPH DESIGN SPEED

- 5' MONOLITHIC ISLAND (KEYED IN) & SIDEWALK
- PAINT STRIPED LANE CLOSURE
- PAVEMENT REMOVAL

MATCHLINE STA 196+00 SEE SHEET NO. 17

MATCHLINE STA 209+00 SEE SHEET NO. 19

MATCHLINE STA 21+00 SEE SHEET NO. 24