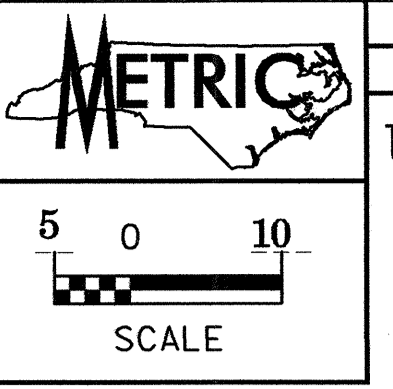


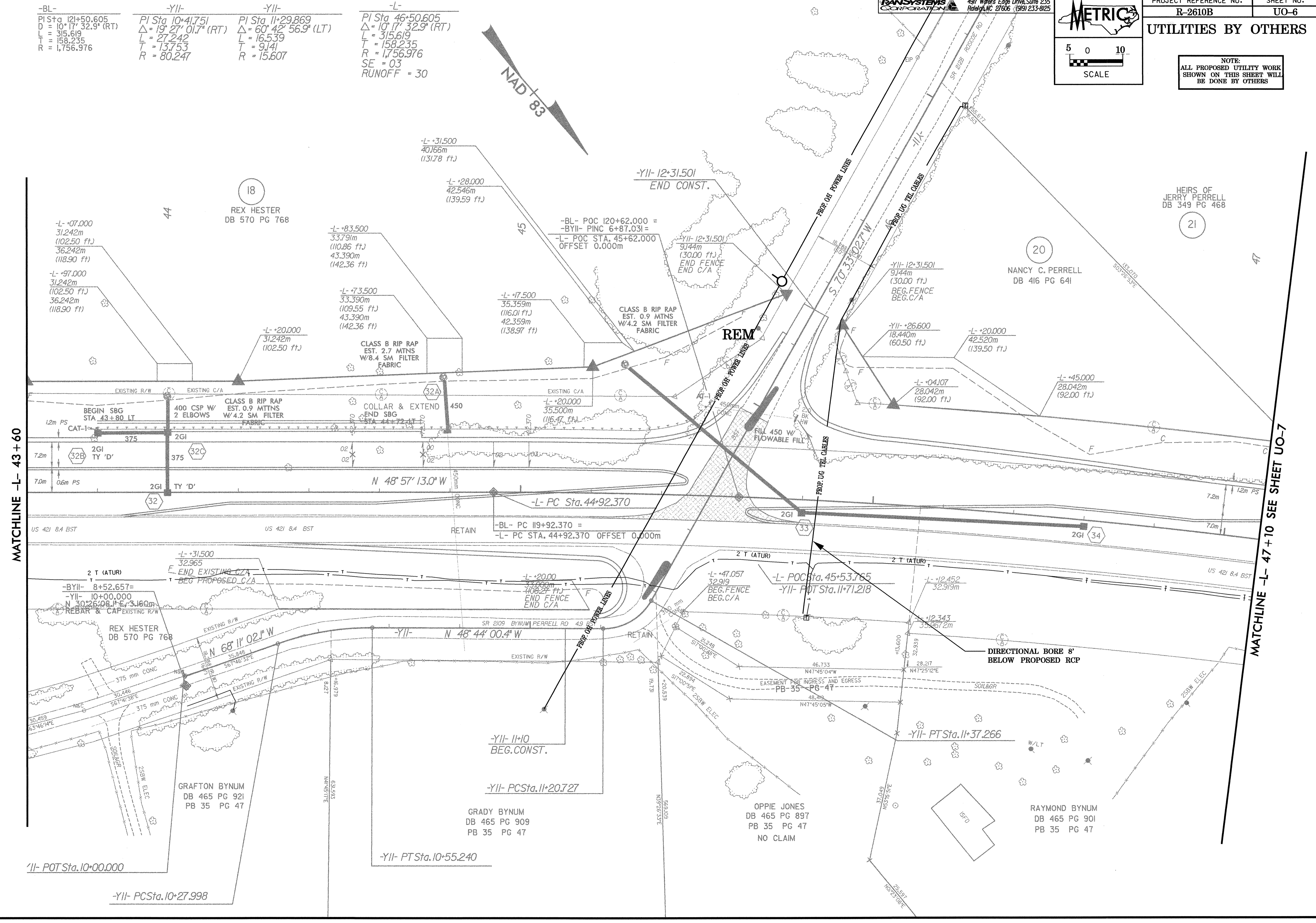
-BL-	-Y11-	-Y11-	-L-
PI Sta 121+50.605	PI Sta 10+41.751	PI Sta 11+29.869	PI Sta 46+50.605
D = 10° 17' 32.9" (RT)	Δ = 19° 27' 01.7" (RT)	Δ = 60° 42' 56.9" (LT)	Δ = 10° 17' 32.9" (RT)
L = 315.619	L = 27.242	L = 16.539	L = 315.619
T = 158.235	T = 13.753	T = 9.141	T = 158.235
R = 1,756.976	R = 80.247	R = 15.607	R = 1,756.976
			SE = 03
			RUNOFF = 30

TRANS SYSTEMS CORPORATION
4917 Waters Edge Drive, Suite 235
Raleigh, NC 27606 (919) 233-8125



PROJECT REFERENCE NO. R-2610B
SHEET NO. UO-6
UTILITIES BY OTHERS

NOTE:
ALL PROPOSED UTILITY WORK
SHOWN ON THIS SHEET WILL
BE DONE BY OTHERS



MATCHLINE -L- 43 + 60

MATCHLINE -L- 47 + 10 SEE SHEET UO-7

11/18/2003 08:38:42 AM
L:\Users\Roadway\Projects\2610B\2610B.dwg