

**METRIC**

5 0 10

CONST. REV.

R / W REV.

PROJECT REFERENCE NO. R-2610 B	SHEET NO. 4
R / W SHEET NO.	
ROADWAY DESIGN ENGINEER SEAL 17691 RICHARD A. SHILLINGHAM	HYDRAULICS ENGINEER SEAL 22100 STEPHEN R. MORROW

SEE SHEET 40 FOR -L- PROFILE

**DATUM DESCRIPTION**

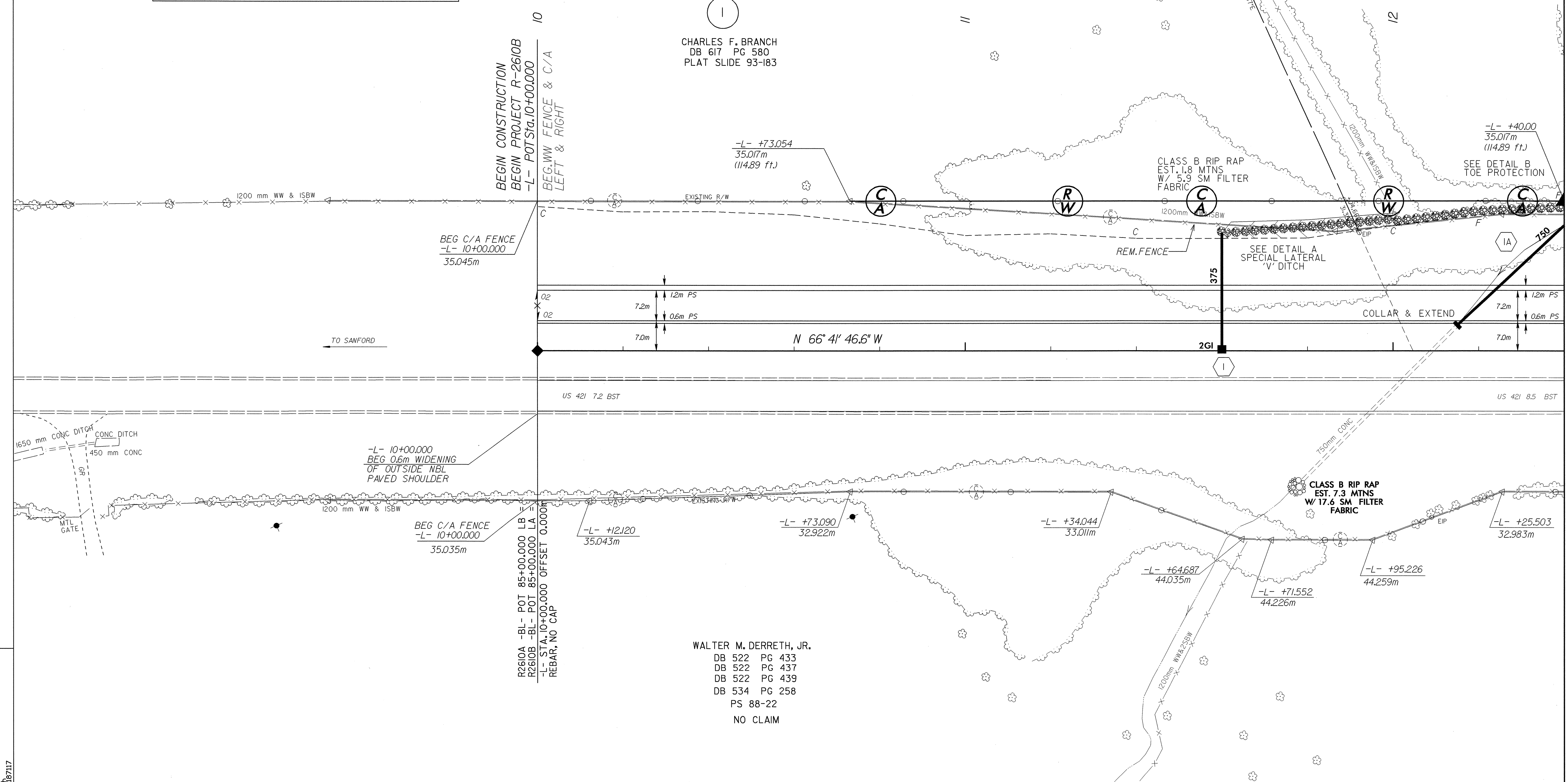
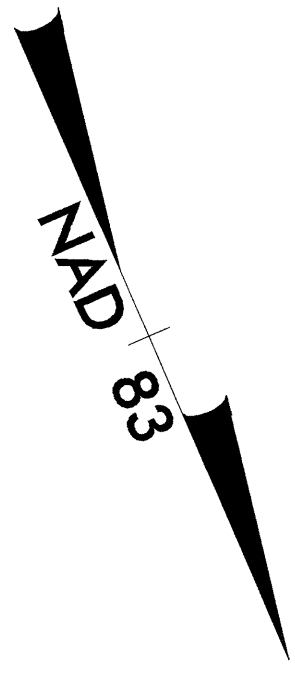
THE LOCALIZED COORDINATE SYSTEM DEVELOPED FOR THIS PROJECT IS BASED ON THE STATE PLANE COORDINATES ESTABLISHED BY NCGS FOR MONUMENT "GULF"

WITH NAD 83 STATE PLANE GRID COORDINATES OF  
NORTHING: 200429.889(m) EASTING: 583653.011(m)

THE AVERAGE COMBINED GRID FACTOR USED ON THIS PROJECT (GROUND TO GRID) IS: 0.99987697

THE N.C. LAMBERT GRID BEARING LOCALIZED HORIZONTAL GROUND DISTANCE FROM "GULF" TO -L- STATION 10+00.000 IS 6961.937m AND BEARING N 36°03'46.9" W

ALL LINEAR DIMENSIONS ARE LOCALIZED HORIZONTAL DISTANCES  
VERTICAL DATUM USED IS NGVD 29



REVISIONS

MATCHLINE -L- 12 + 40 SEE SHEET 5

WALTER M. DERRETH, JR.  
DB 522 PG 433  
DB 522 PG 437  
DB 522 PG 439  
DB 534 PG 258  
PS 88-22  
NO CLAIM

8/17/99

25-MAR-2004 08:54

RSB:R11/11/04 AT R0187117