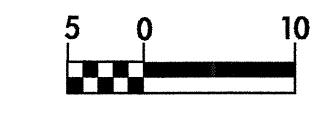


8/17/99

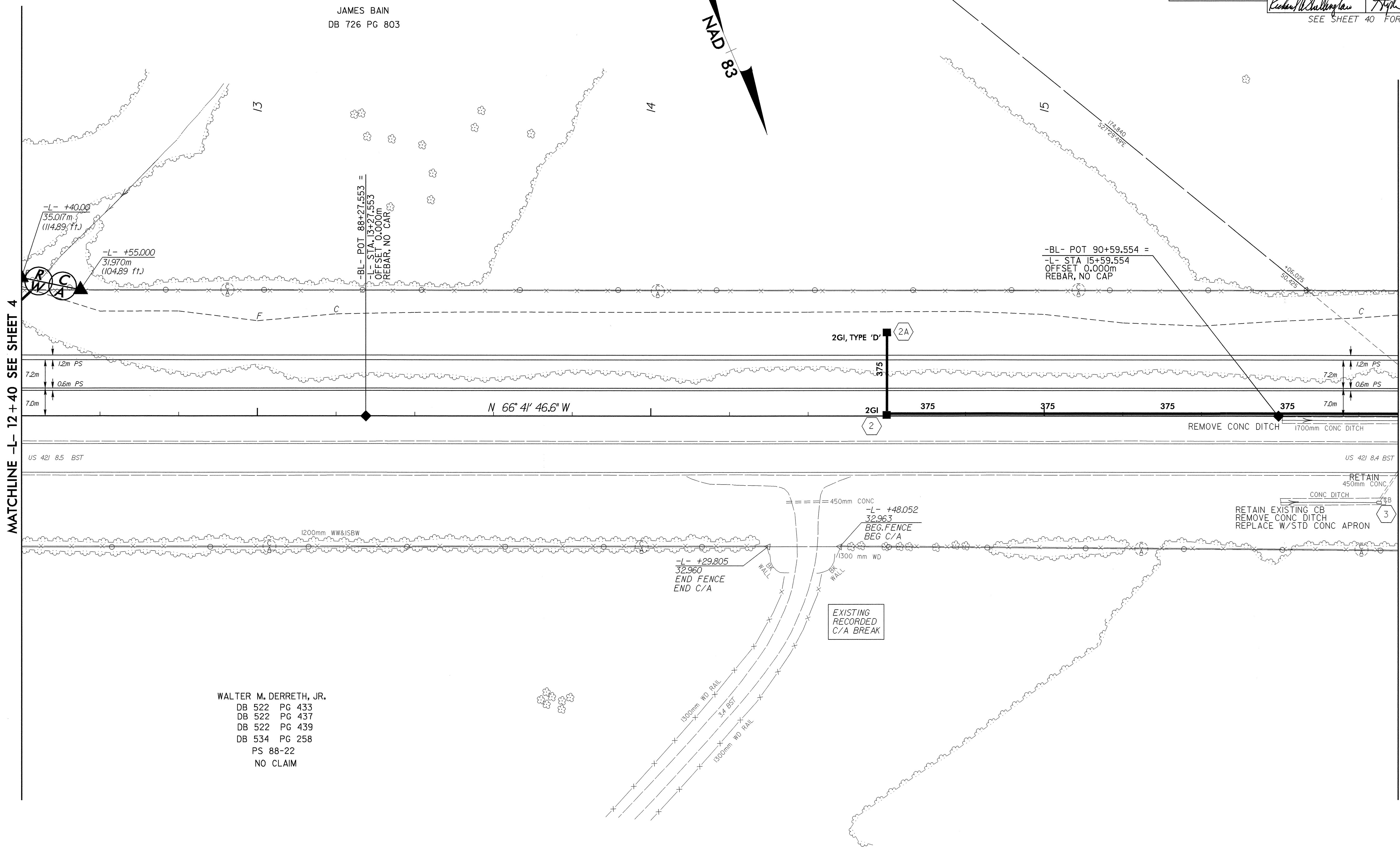
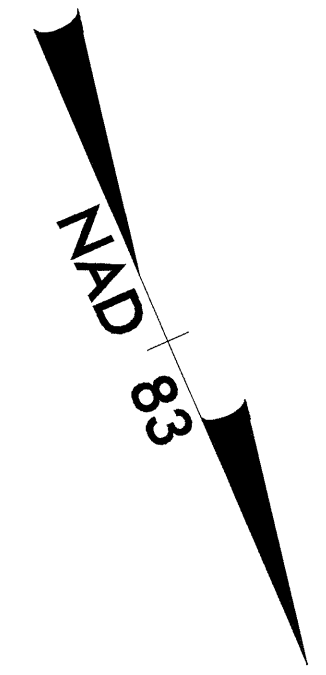


|                                                           |                                          |
|-----------------------------------------------------------|------------------------------------------|
| PROJECT REFERENCE NO.<br>R-2610 B                         | SHEET NO.<br>5                           |
| R/W SHEET NO.                                             |                                          |
| ROADWAY DESIGN ENGINEER<br>RICHARD A. SHILLING<br>6-23-04 | HYDRAULICS ENGINEER<br>STEPHEN R. MORGAN |
| PROFESSIONAL SEAL<br>17691                                | PROFESSIONAL SEAL<br>22100               |
| CONST. REV.                                               |                                          |
| R/W REV.                                                  |                                          |



2

JAMES BAIN  
DB 726 PG 803



MATCHLINE -L- 12 + 40 SEE SHEET 4

MATCHLINE -L- 15 + 90 SEE SHEET 6

REVISIONS

WALTER M. DERRETH, JR.  
DB 522 PG 433  
DB 522 PG 437  
DB 522 PG 439  
DB 534 PG 258  
PS 88-22  
NO CLAIM

27-OCT-2003 15:27  
C:\pwork\2610\8852  
AT 11018852