

METRIC

5 0 10

CONST. REV.

R/W REV.

PROJECT REFERENCE NO. R-2610 B	SHEET NO. 10
R/W SHEET NO.	
ROADWAY DESIGN ENGINEER 16-23-04	HYDRAULICS ENGINEER
NORTH CAROLINA PROFESSIONAL ENGINEER SEAL 17691 RICHARD A. SHILLING	NORTH CAROLINA PROFESSIONAL ENGINEER SEAL 22100 STEPHEN R. MORGAN

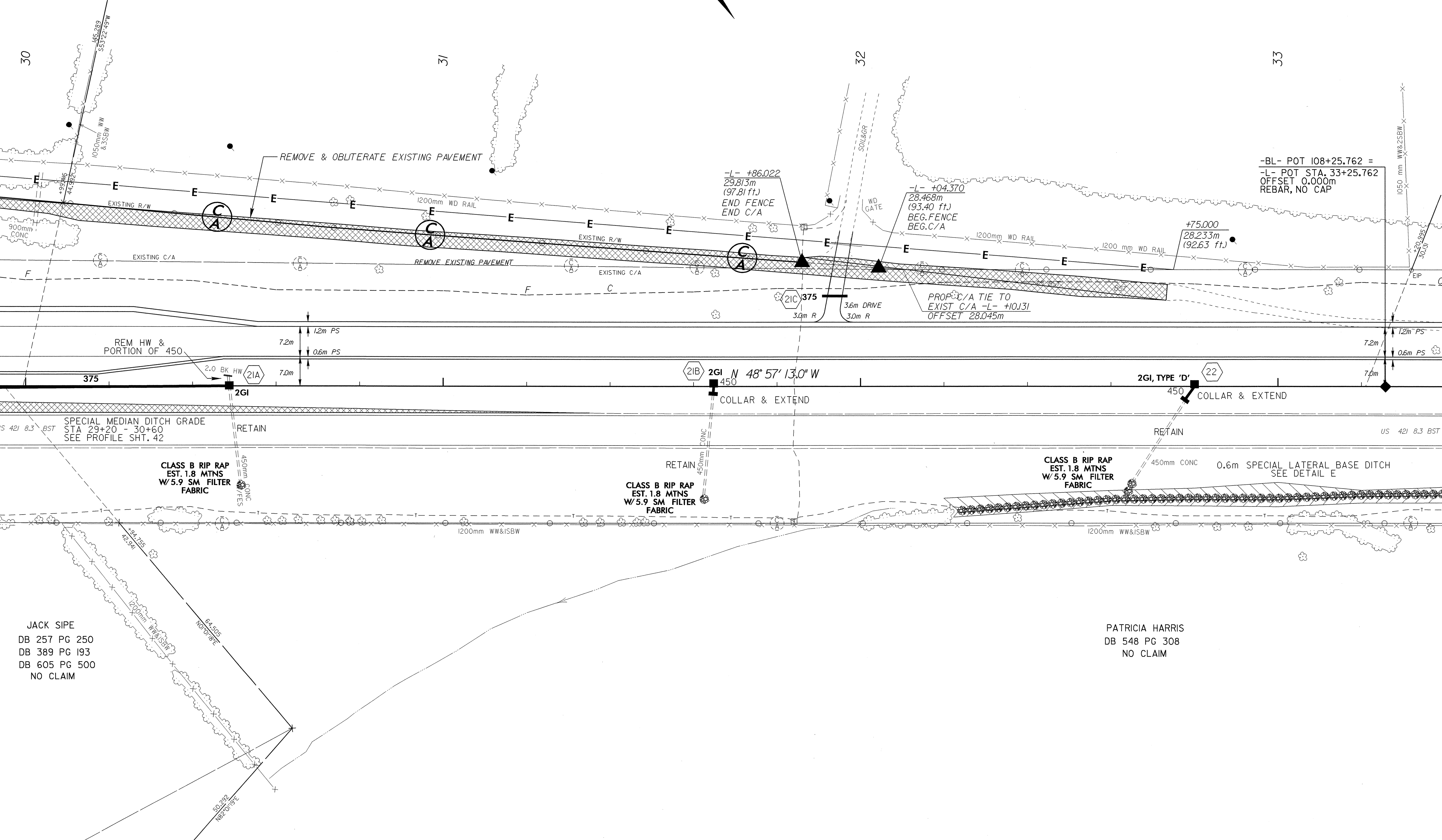
SEE SHEET 42 & 43 FOR -L- PROFILE
SEE SHEET 2-BB FOR -L- & -Y9A- INTERSECTION DETAILS

8/17/03

23-JUN-2004 10:25
R:\11111111\11111111.dwg AT 11:08:17

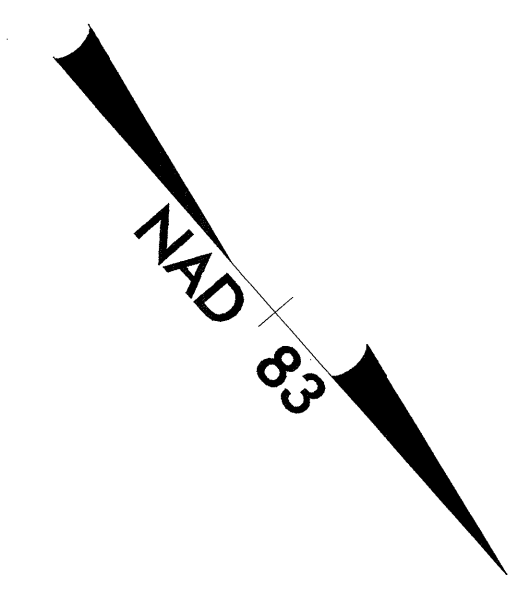
9
E. M. HARRIS, JR.,
FAMILY LAND TRUST
DB 568 PG 244

10
MARY ALYCE LASLEY
DB 407 PG 487
PS 2000-401



MATCHLINE -L- 29+90 SEE SHEET 9

MATCHLINE -L- 33+40 SEE SHEET 11



REVISIONS