

METRIC

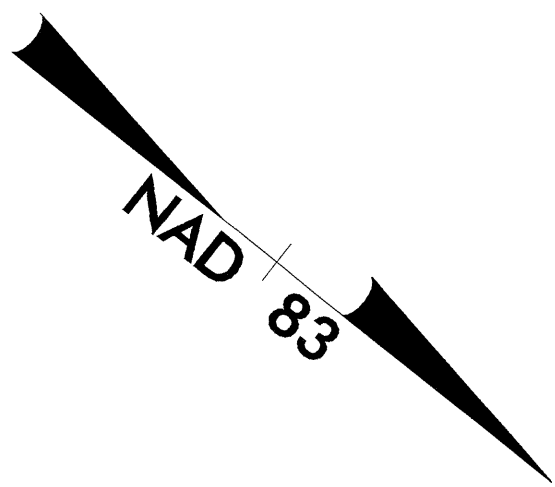
PROJECT REFERENCE NO. R-2610.B SHEET NO. 16
 R/W SHEET NO.

ROADWAY DESIGN ENGINEER
 SEAL 17691
 RICHARD A. SHILLINGDEAN

HYDRAULICS ENGINEER
 SEAL 22100
 STEPHEN R. MORGAN

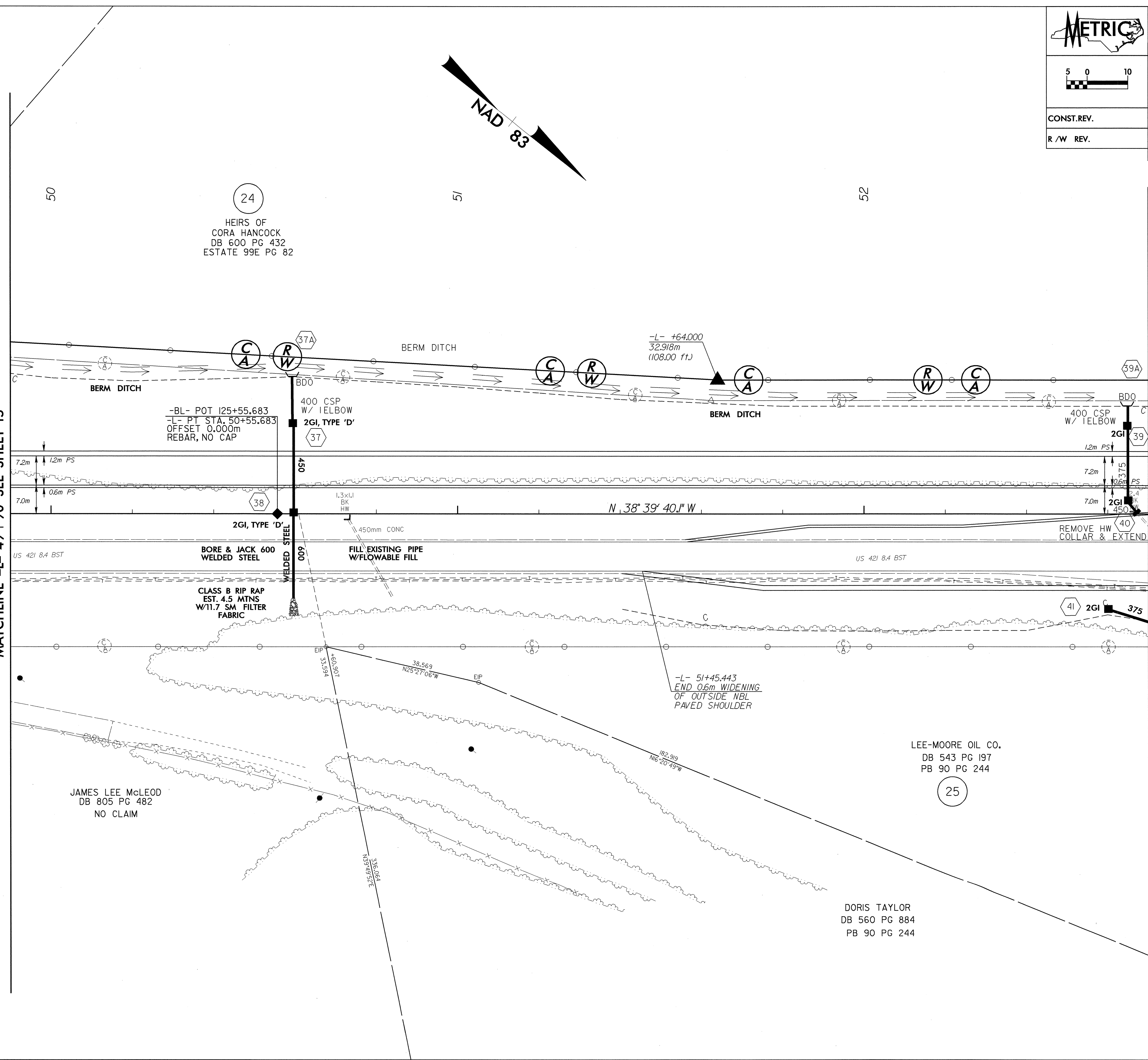
CONST. REV.
 R/W REV.

SEE SHEET 45 FOR -L- PROFILE
 SEE SHEET 2-E FOR -L- & -Y12- INTERSECTION DETAILS



MATCHLINE -L- 49 + 90 SEE SHEET 15

MATCHLINE -L- 52 + 70 SEE SHEET 17



24
 HEIRS OF
 CORA HANCOCK
 DB 600 PG 432
 ESTATE 99E PG 82

LEE-MOORE OIL CO.
 DB 543 PG 197
 PB 90 PG 244

25

DORIS TAYLOR
 DB 560 PG 884
 PB 90 PG 244

JAMES LEE McLEOD
 DB 805 PG 482
 NO CLAIM

REVISIONS

8/17/99

26-MAR-2004 08:42
 R:\PROJECTS\2610\2610.dwg
 R:\PROJECTS\2610\2610.dwg