
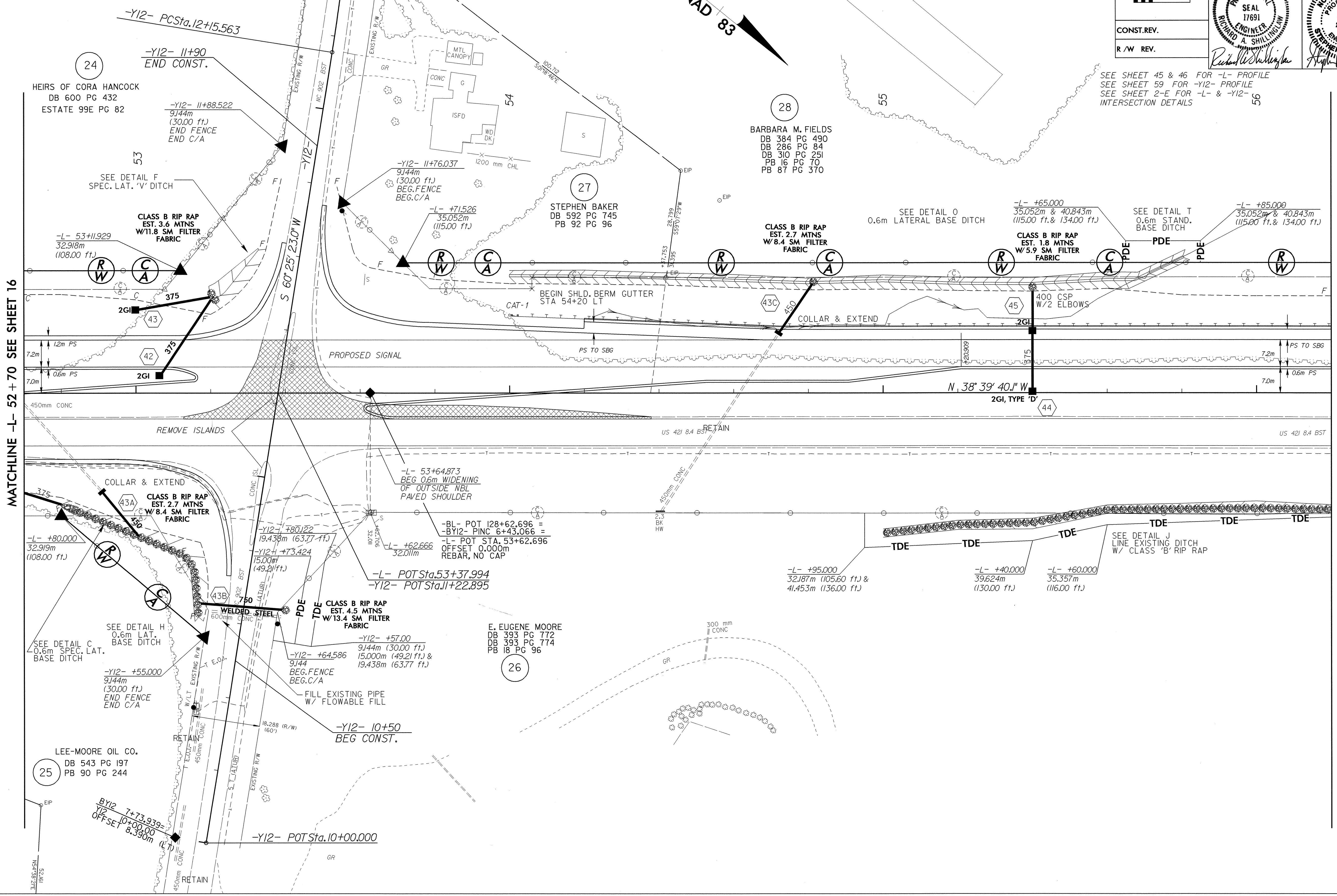


-Y12-  
 PI Sta 12+39.905  
 $\Delta = 4^{\circ}09'12.4" (LT)$   
 $L = 48.663$   
 $T = 24.342$   
 $R = 671.294$

 5 0 10 CONST. REV. R/W REV.	PROJECT REFERENCE NO. R-2610 B	SHEET NO. 17
	R/W SHEET NO.	
	ROADWAY DESIGN ENGINEER NORTH CAROLINA PROFESSIONAL SEAL 17691 RICHARD A. SHILLINGHAM ENGINEER	HYDRAULICS ENGINEER NORTH CAROLINA PROFESSIONAL SEAL 22100 STEPHEN R. MORROW ENGINEER



SEE SHEET 45 & 46 FOR -L- PROFILE  
 SEE SHEET 59 FOR -Y12- PROFILE  
 SEE SHEET 2-E FOR -L- & -Y12- INTERSECTION DETAILS

MATCHLINE -L- 52 + 70 SEE SHEET 16

MATCHLINE -L- 56 + 20 SEE SHEET 18

REVISIONS

26-MAR-2004 09:42  
 R:\PROJECTS\2610B\DWG\17.dwg  
 R:\PROJECTS\2610B\DWG\17.dwg