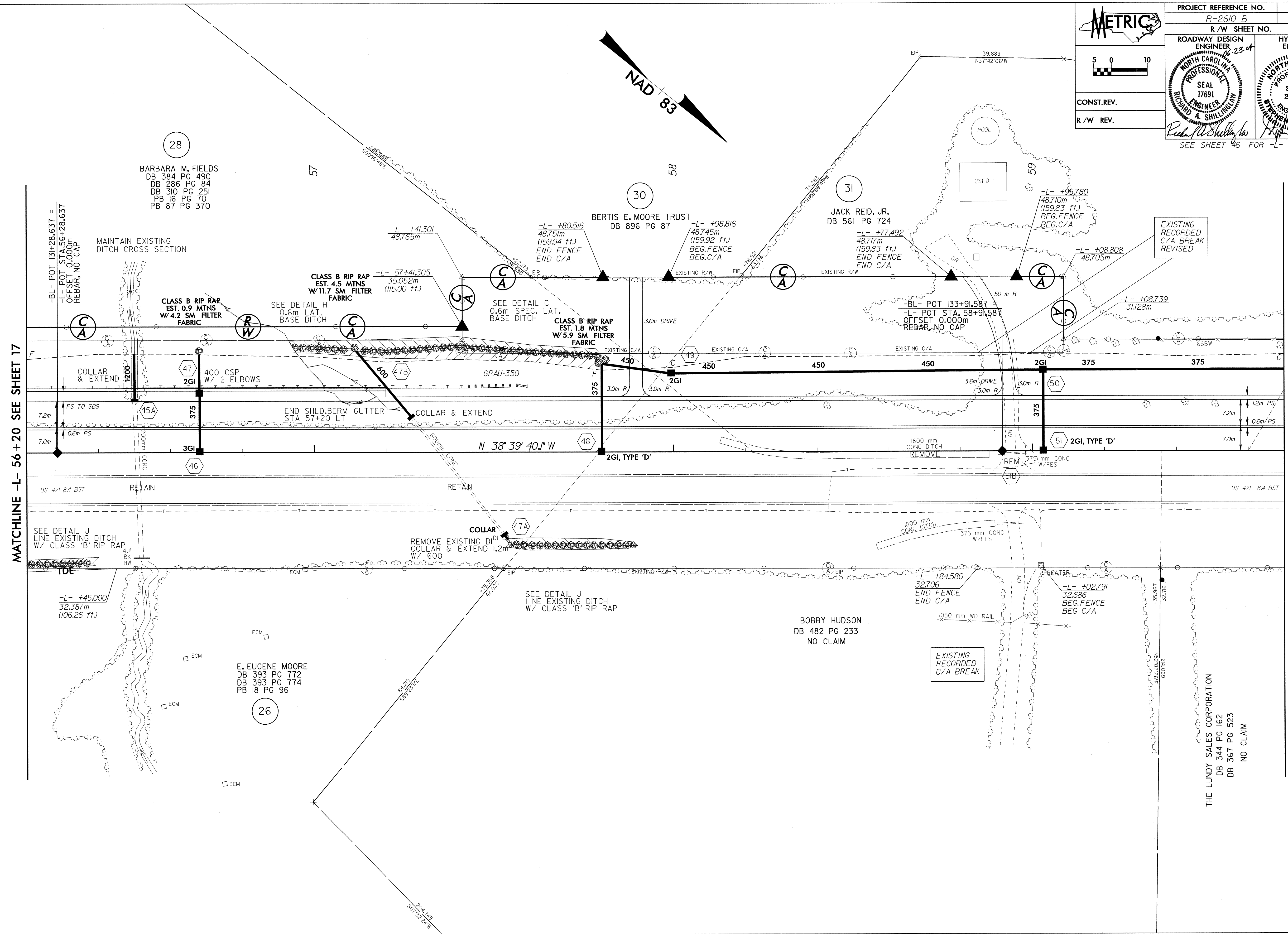
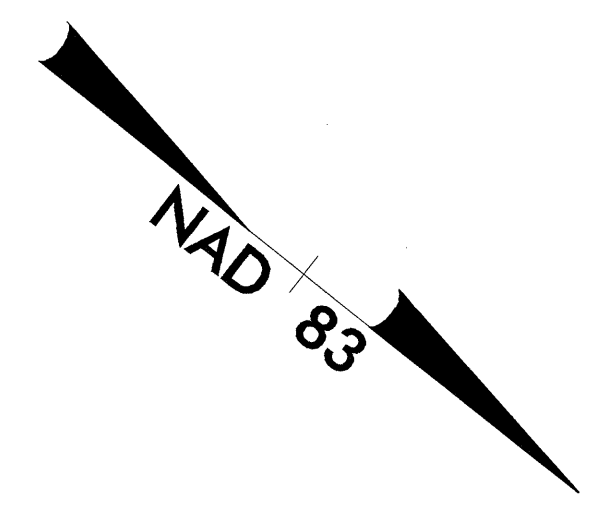


PROJECT REFERENCE NO. R-2610 B		SHEET NO. 18	
R/W SHEET NO.			
ROADWAY DESIGN ENGINEER RICHARD A. SHILLING, INC. SEAL 17691		HYDRAULICS ENGINEER STEPHEN R. MORGAN SEAL 22100	
CONST. REV.		R/W REV.	
SEE SHEET 46 FOR -L- PROFILE			



REVISIONS

MATCHLINE -L- 56 + 20 SEE SHEET 17

MATCHLINE 59 + 70 SEE SHEET 19

23 JUN 2006 JLE:3
RSH:11/13/06
R/W:18/1717