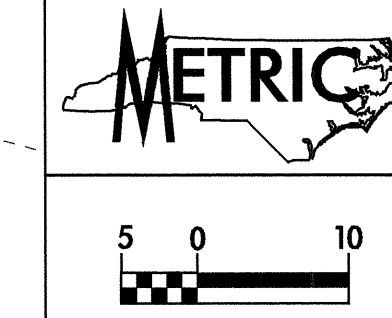


8/17/09

SEE SHEET 46 & 47 FOR -L- PROFILE
SEE SHEET 60 FOR -Y13- PROFILE
SEE SHEET 2-F FOR -L- & -Y13-
INTERSECTION DETAILS

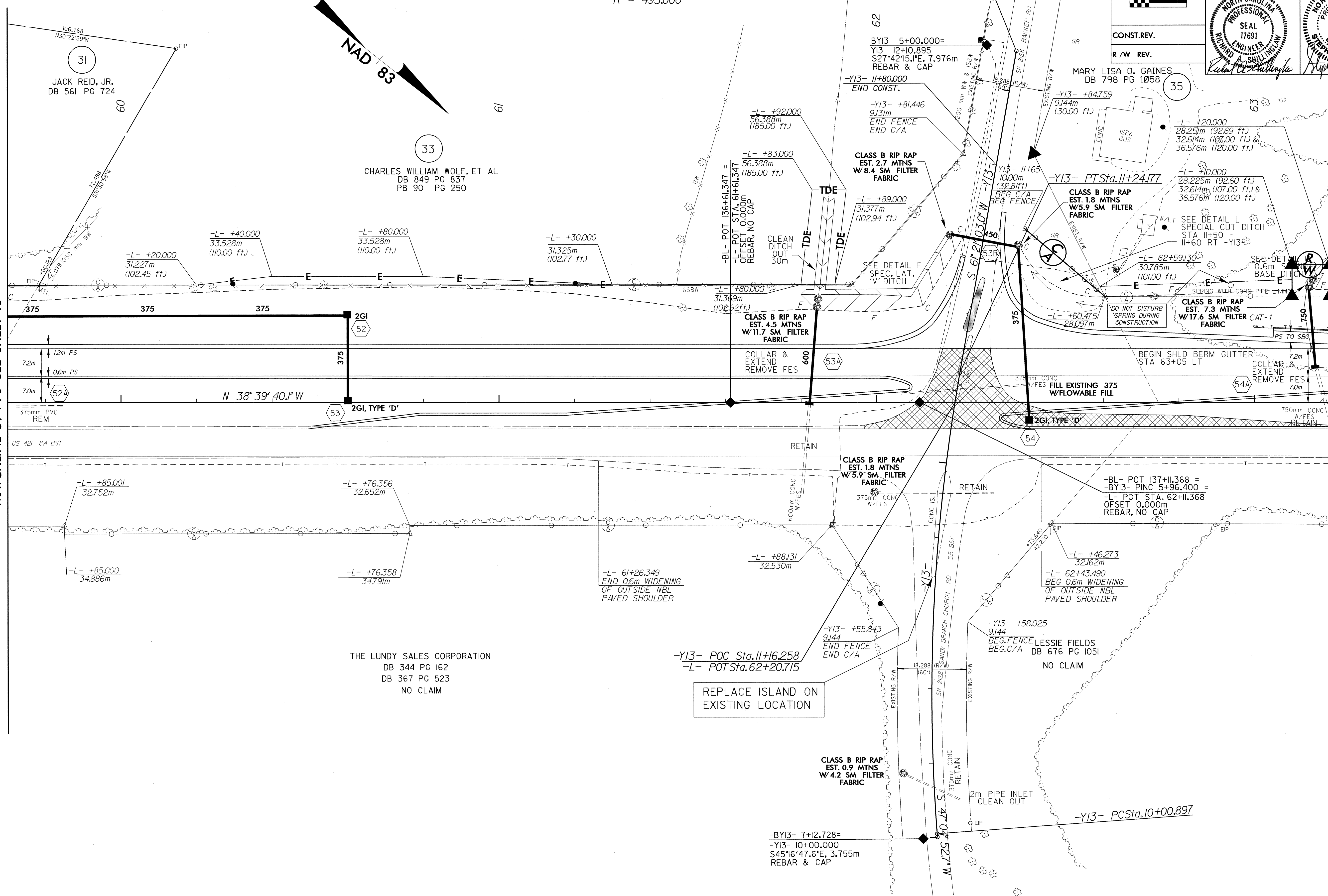
-Y13-
PI Sta 10+62.858
 $\Delta = 14' 16" 10.3" (RT)$
L = 123.280
T = 61.961
R = 495.000



PROJECT REFERENCE NO. R-2610 B		SHEET NO. 19
R/W SHEET NO.		
ROADWAY DESIGN ENGINEER 06-23-04 NORTH CAROLINA PROFESSIONAL ENGINEER SEAL 17691 RICHARD A. SHILLING	HYDRAULICS ENGINEER NORTH CAROLINA PROFESSIONAL ENGINEER SEAL 22100 STEPHEN R. MORRISON	
CONST. REV.		
R/W REV.		

MATCHLINE 59 + 70 SEE SHEET 18

MATCHLINE -L- 63 + 20 SEE SHEET 20



31
JACK REID, JR.
DB 561 PG 724

33
CHARLES WILLIAM WOLF, ET AL
DB 849 PG 837
PB 90 PG 250

THE LUNDY SALES CORPORATION
DB 344 PG 162
DB 367 PG 523
NO CLAIM

MARY LISA O. GAINES
DB 798 PG 1058

SEE DETAIL L
SPECIAL CUT DITCH
STA 11+50 -
11+60 RT -Y13

SEE DETAIL R
0.6m
BASE DITCH

REPLACE ISLAND ON
EXISTING LOCATION

REVISIONS

26-MAR-2004 08:45
RSHILLING
AT 1871717