

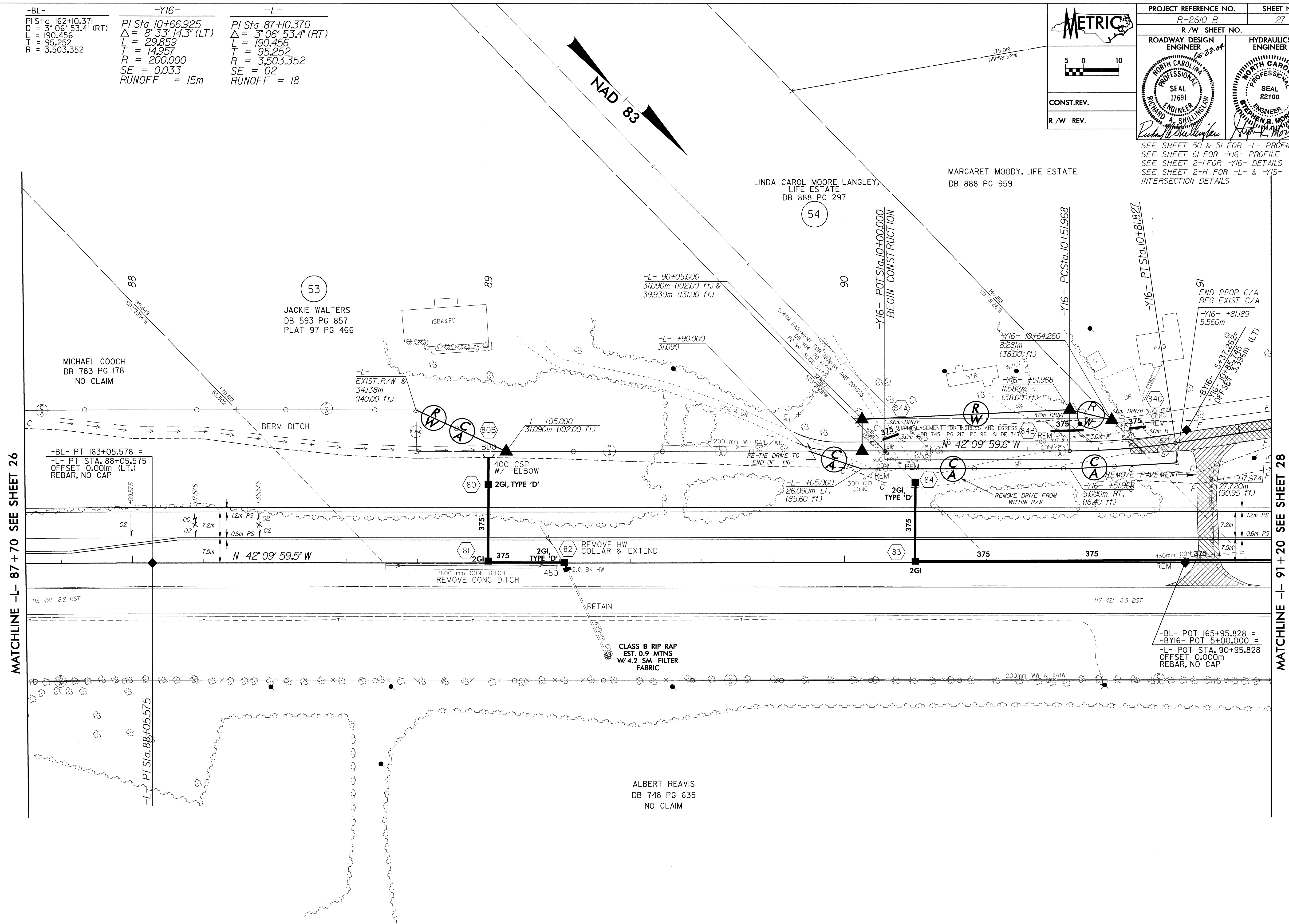
-BL-	-Y16-	-L-
PI Sta. 162+10.371	PI Sta. 10+66.925	PI Sta. 87+10.370
D = 3° 06' 53.4" (RT)	Δ = 8° 33' 14.3" (LT)	Δ = 3° 06' 53.4" (RT)
L = 190.456	L = 29.859	L = 190.456
T = 95.252	T = 14.957	T = 95.252
R = 3,503.352	R = 200.000	R = 3,503.352
	SE = 0.033	SE = 02
	RUNOFF = 15m	RUNOFF = 18

**METRIC**

CONST.REV.  
R/W REV.

PROJECT REFERENCE NO.	SHEET NO.
R-2610 B	27
R/W SHEET NO.	
ROADWAY DESIGN ENGINEER	HYDRAULICS ENGINEER
SEAL 17691	SEAL 22100
THOMAS SHILLINGDEAN	STEPHEN R. MORSE

SEE SHEET 50 & 51 FOR -L- PROFILE  
SEE SHEET 61 FOR -Y16- PROFILE  
SEE SHEET 2-1 FOR -Y16- DETAILS  
SEE SHEET 2-H FOR -L- & -Y15- INTERSECTION DETAILS



MATCHLINE -L- 87+70 SEE SHEET 26

MATCHLINE -L- 91+20 SEE SHEET 28

REVISIONS

23-OCT-2003 1543  
C:\p2\2610B\27.dwg  
27-10-03-11:00:00 AM 10/10/03 11:00:00 AM