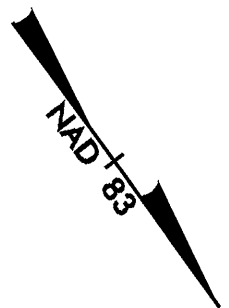


-BL-
 PI Sta 94+07.682
 D = 17° 44' 33.7" (RT)
 L = 544.080
 T = 274.235
 R = 1,756.976

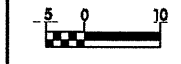
-L-
 PI Sta 19+07.683
 Δ = 17° 44' 33.6" (RT)
 L = 544.079
 T = 274.235
 R = 1,756.976
 SE = 03
 RUNOFF = 30



NOTE :
 G/R DESIGN WILL BE COMPLETED FOR OUTSIDE
 & MEDIAN SBL ONCE WE KNOW LIMITS OF SBL BRIDGE

NOTE :
 RETROFIT EXISTING NBL BRIDGE WITH NECESSARY
 GUARDRAIL PROTECTION

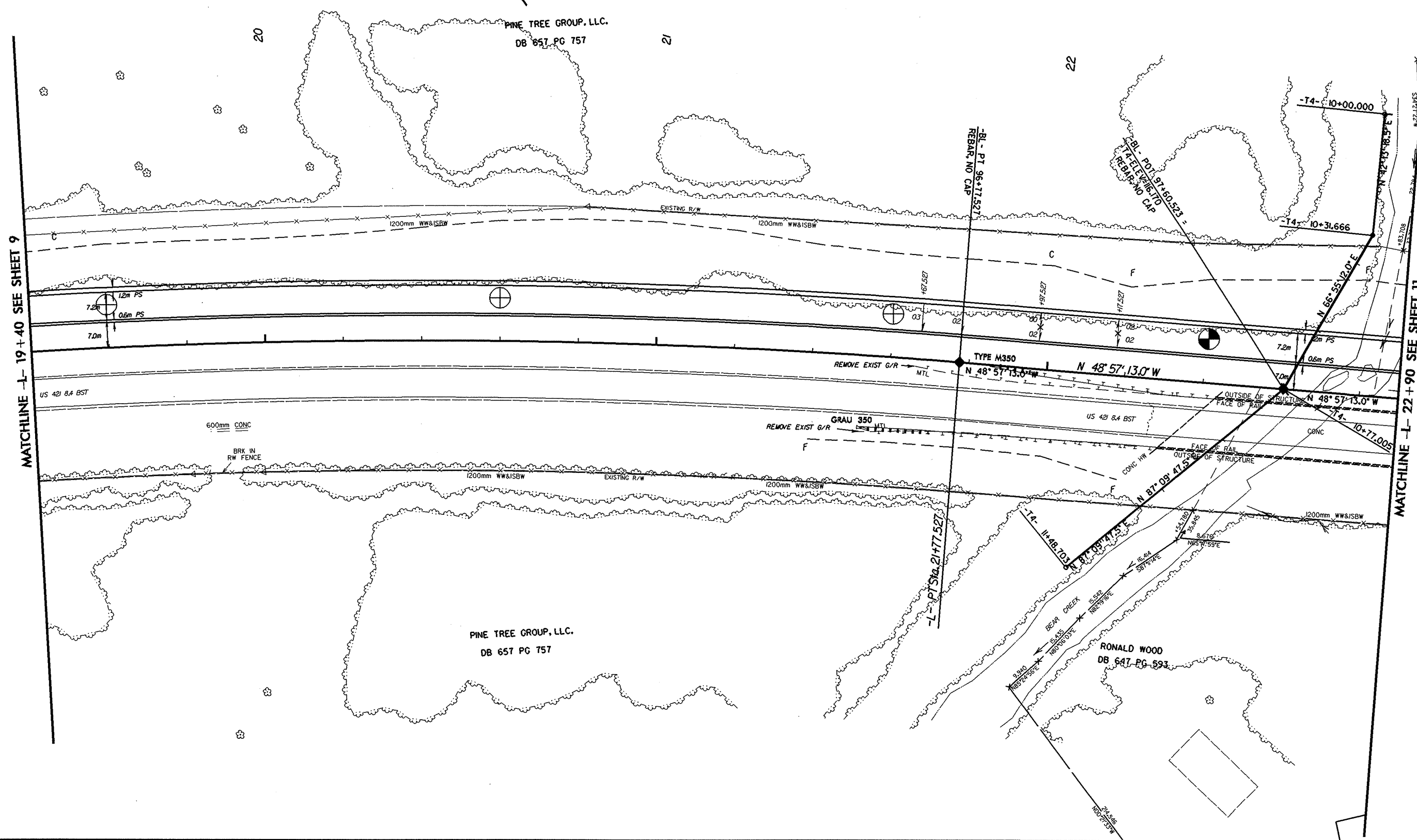
PROJECT REFERENCE NO. R-2610 B		SHEET NO. 10	
R/W SHEET NO.			
ROADWAY DESIGN ENGINEER		HYDRAULICS ENGINEER	
INCOMPLETE PLANS DO NOT USE FOR R/W ACQUISITION PRELIMINARY PLANS DO NOT USE FOR CONSTRUCTION			
CONST.REV. _____		R/W REV. _____	



REVISIONS

MATCHLINE -L- 19 + 40 SEE SHEET 9

MATCHLINE -L- 22 + 90 SEE SHEET 11



*****SYSTEM TIME*****
 *****DATE*****
 *****DRAWN*****
 *****CHECKED*****
 *****DATE*****