

-BL-
 PISTa 144+28.570
 D = 6° 37' 12.8" (LT)
 L = 402.343
 T = 201.396
 R = 3,482.152

-L-
 PI Sta 69+28.571
 Δ = 6° 37' 12.8" (LT)
 L = 402.343
 T = 201.396
 R = 3,482.152
 SE = 02
 RUNOFF = 18

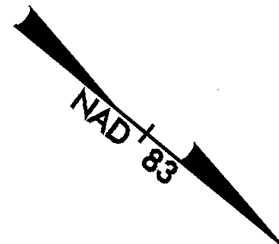
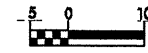
LEWIS MOORE, SR.
 DB 676 PG 1058
 PB 95 PG 273

SANDY BRANCH BAPTIST CHURCH
 DB 735 PG 233
 PB 95 PG 274

LEWIS MOORE, SR.
 DB 676 PG 1060
 PB 95 PG 274



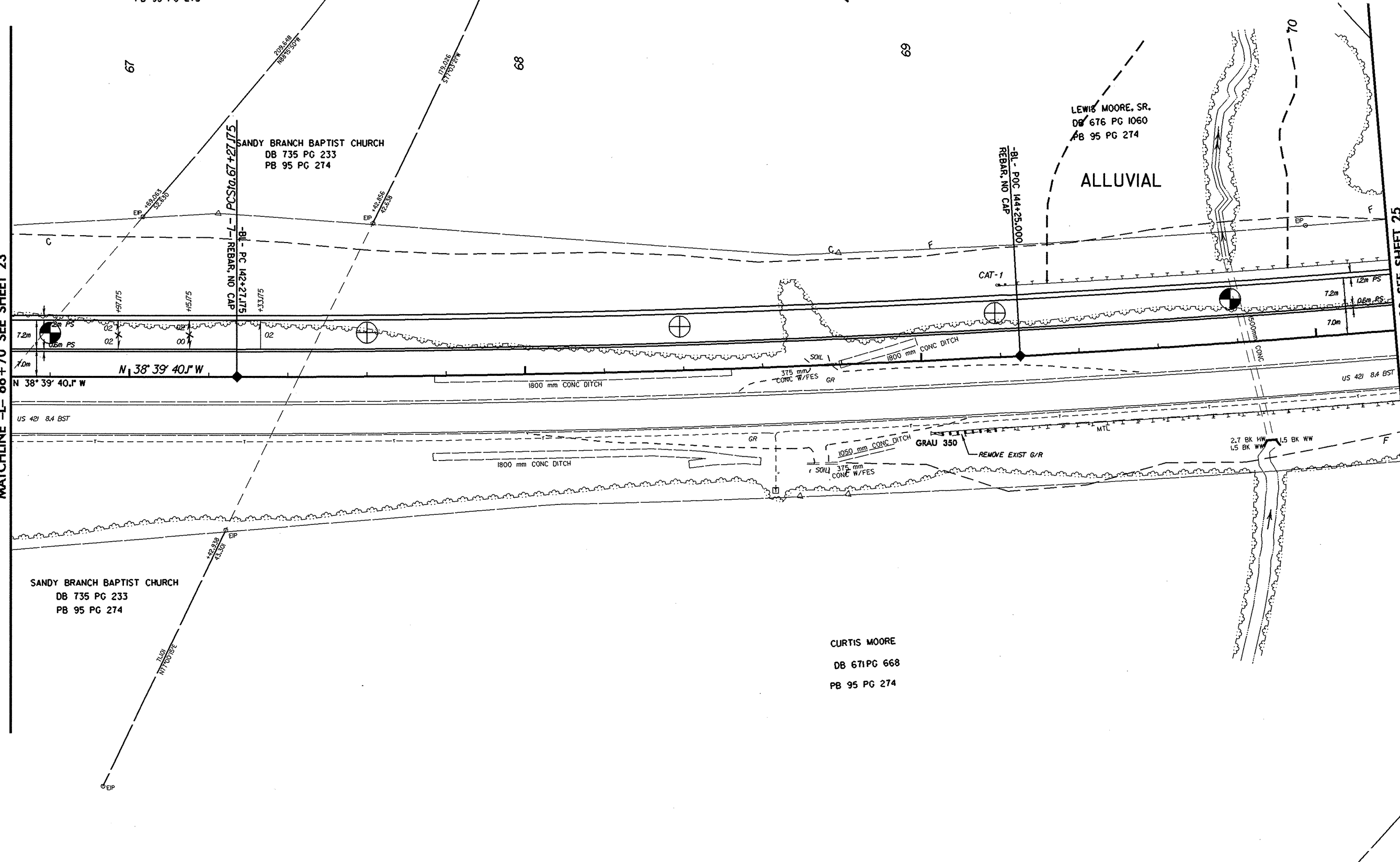
PROJECT REFERENCE NO. R-2610 B	SHEET NO. 24
R/W SHEET NO.	
ROADWAY DESIGN ENGINEER	HYDRAULICS ENGINEER
INCOMPLETE PLANS DO NOT USE FOR R/W ACQUISITION PRELIMINARY PLANS DO NOT USE FOR CONSTRUCTION	
CONST. REV. _____	
R/W REV. _____	



REVISIONS

MATCHLINE -L- 66+70 SEE SHEET 23

MATCHLINE -L- 70+20 SEE SHEET 25



SANDY BRANCH BAPTIST CHURCH
 DB 735 PG 233
 PB 95 PG 274

CURTIS MOORE
 DB 671 PG 668
 PB 95 PG 274

*****SYSTEM TIME*****
 *****DATE*****
 *****TIME*****