

-BL-
 PIS+g 162+10.371
 D = 3° 06' 53.4" (RT)
 L = 190.456
 T = 95.252
 R = 3,503.352

-Y16-
 PI Sta 10+66.925
 $\Delta = 8' 33" 14.3" (LT)$
 L = 29.859
 T = 14.957
 R = 200.000
 SE = 0.033
 RUNOFF = 15m

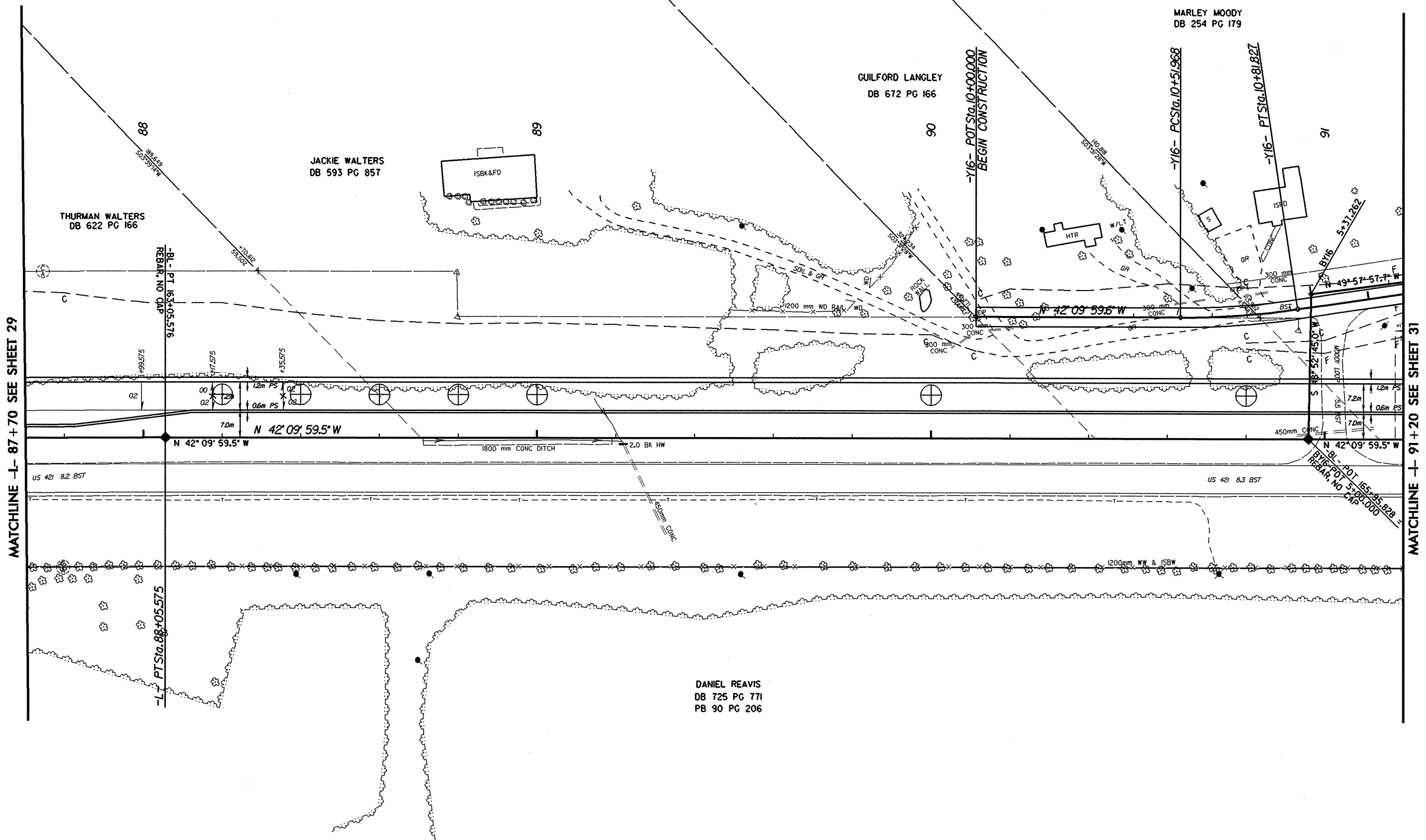
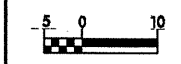
METRIC

PROJECT REFERENCE NO. R-2610 B SHEET NO. 30
 R/W SHEET NO.

ROADWAY DESIGN ENGINEER
 HYDRAULICS ENGINEER

INCOMPLETE PLANS
 DO NOT USE FOR R/W ACQUISITION
PRELIMINARY PLANS
 DO NOT USE FOR CONSTRUCTION

CONST. REV. _____
 R/W REV. _____



REVISIONS

MATCHLINE -L- 87+70 SEE SHEET 29

MATCHLINE -L- 91+20 SEE SHEET 31

 SYSTEM TIME *****

 USER NAME *****