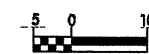


-BL-
Pis Sta 199+59.294
f s = 1' 08" 07.2
Ls = 45.720
LT = 30.481
ST = 15.241

-NBL-
Pis Sta 124+85.258
Os = 1' 57" 11.8
Ls = 75.000
LT = 50.003
ST = 25.003
SE = 045

-SBL-
Pis Sta 124+61.460
Os = 1' 57" 11.8
Ls = 75.000
LT = 50.003
ST = 25.003
SE = 045

METRIC



CONST. REV. _____
R/W REV. _____

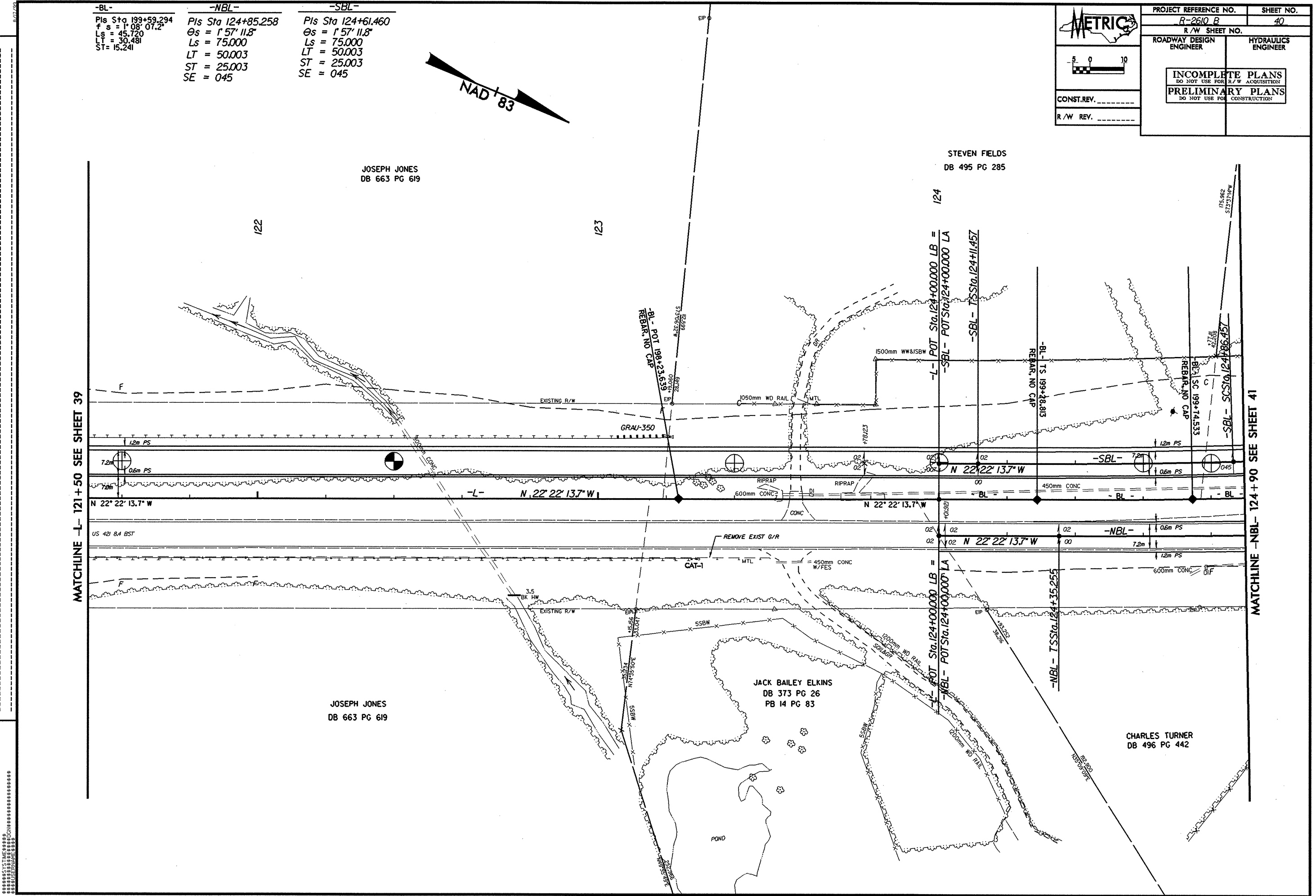
PROJECT REFERENCE NO. R-2610 B	SHEET NO. 40
ROADWAY DESIGN ENGINEER	HYDRAULICS ENGINEER
<p>INCOMPLETE PLANS DO NOT USE FOR R/W ACQUISITION</p> <p>PRELIMINARY PLANS DO NOT USE FOR CONSTRUCTION</p>	



REVISIONS

MATCHLINE -L- 121 + 50 SEE SHEET 39

MATCHLINE -NBL- 124 + 90 SEE SHEET 41



STEVEN FIELDS
DB 495 PG 285

JOSEPH JONES
DB 663 PG 619

JOSEPH JONES
DB 663 PG 619

JACK BAILEY ELKINS
DB 373 PG 26
PB 14 PG 83

CHARLES TURNER
DB 496 PG 442

