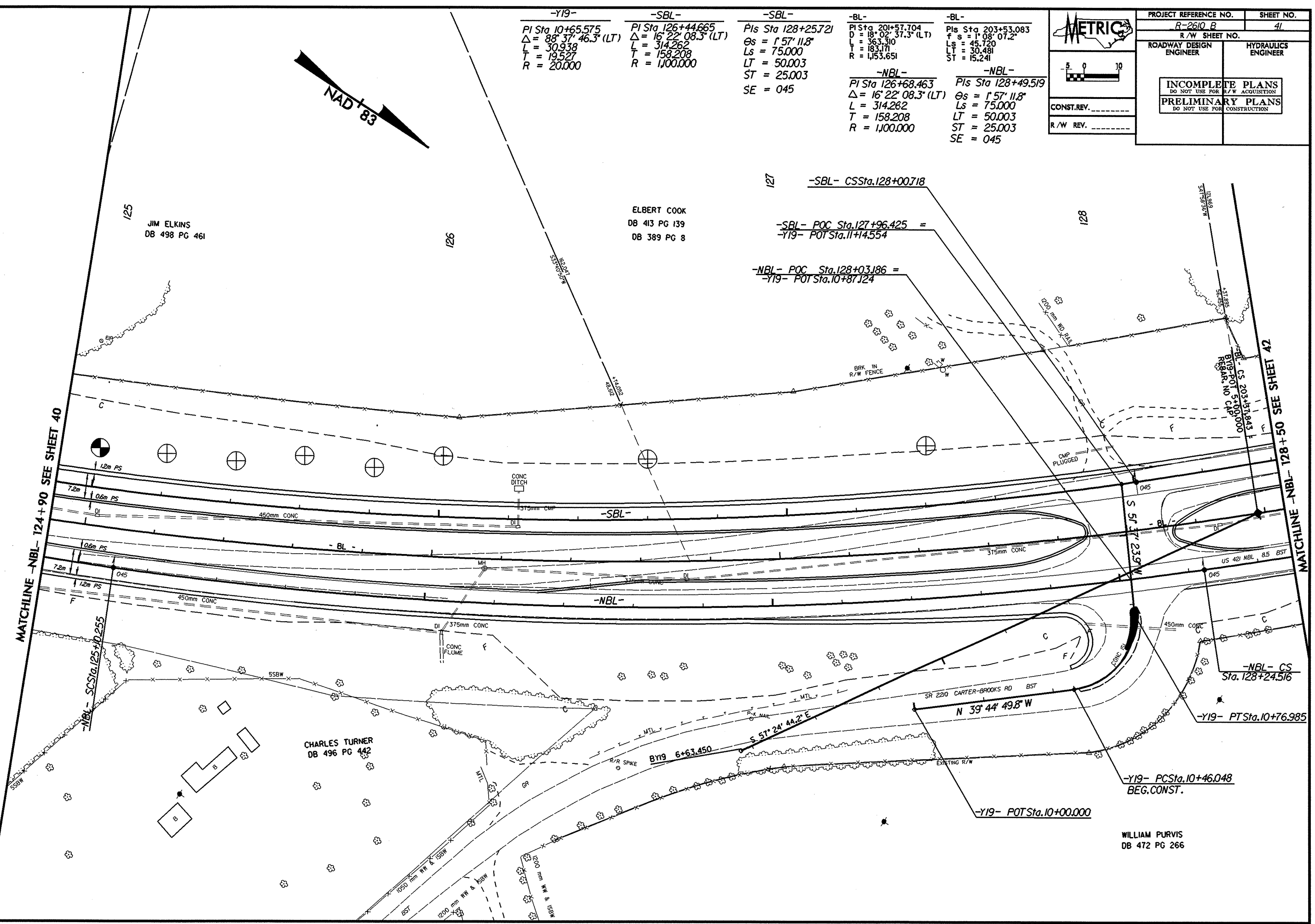


-Y19-	-SBL-	-SBL-	-BL-	-BL-
PI Sta 10+65.575 Δ = 88° 37' 46.3" (LT) L = 30.938 T = 19.527 R = 20.000	PI Sta 126+44.665 Δ = 16° 22' 08.3" (LT) L = 314.262 T = 158.208 R = 1,100.000	PIs Sta 128+25.721 Θs = 1° 57' 11.8" Ls = 75.000 LT = 50.003 ST = 25.003 SE = 045	PIs Sta 201+57.704 D = 18° 02' 37.3" (LT) L = 363.310 T = 183.171 R = 1,153.651	PIs Sta 203+53.083 f s = 1° 08' 07.2" Ls = 45.720 LT = 30.481 ST = 15.241
			-NBL-	-NBL-
			PI Sta 126+68.463 Δ = 16° 22' 08.3" (LT) L = 314.262 T = 158.208 R = 1,100.000	PIs Sta 128+49.519 Θs = 1° 57' 11.8" Ls = 75.000 LT = 50.003 ST = 25.003 SE = 045

METRIC

CONST. REV. _____
R/W REV. _____

PROJECT REFERENCE NO. R-2610 B	SHEET NO. 41
R/W SHEET NO.	
ROADWAY DESIGN ENGINEER	HYDRAULICS ENGINEER
INCOMPLETE PLANS DO NOT USE FOR R/W ACQUISITION PRELIMINARY PLANS DO NOT USE FOR CONSTRUCTION	



REVISIONS