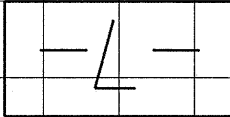




INCOMPLETE PLANS  
 DO NOT USE FOR R/W ACQUISITION  
 PRELIMINARY PLANS  
 DO NOT USE FOR CONSTRUCTION

CONST. REV. \_\_\_\_\_  
 R/W REV. \_\_\_\_\_

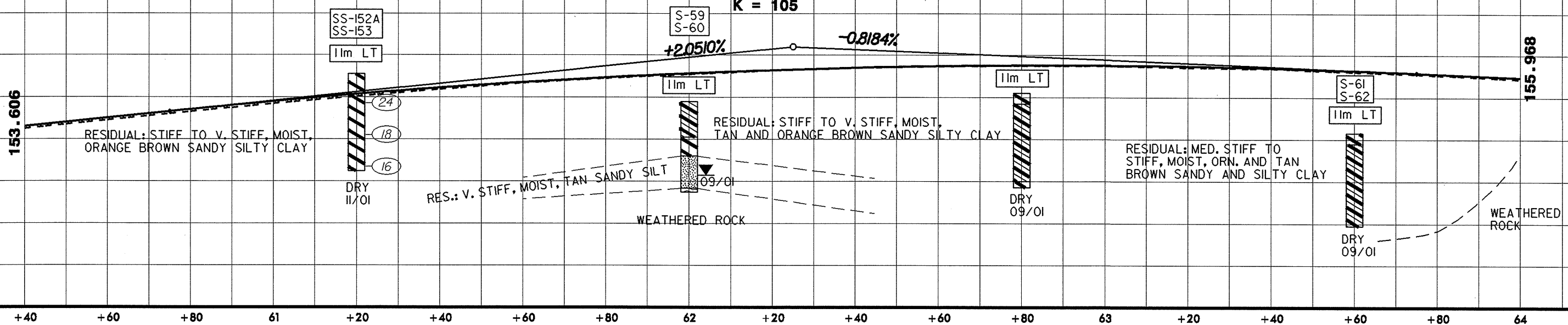
BM # 13  
 R/R SPIKE IN BASE OF POWER POLE, 53.23m RIGHT  
 OF BASELINE -L- 137+00.000 ELEV. 155.871m



**SOIL TEST RESULTS**

SAMPLE NO.	OFFSET	STATION	DEPTH INTERVAL	AASHTO CLASS.	LL	P.I.	% BY WEIGHT				% PASSING (SIEVES)			% MOISTURE	% ORGANIC
							C. SAND	F. SAND	SILT	CLAY	10	40	200		
SS-152A	11M LT	61+20	0.00-2.50	A-7-6(40)	75	48	13.0	10.6	34.3	42.0	100	94	78	-	-
SS-153	11M LT	61+20	2.50-4.63	A-7-6(19)	49	23	13.6	10.0	36.3	40.0	100	93	78	-	-

PI = 62+25.000  
 EL = 157.400 m  
 VC = 300 m  
 K = 105



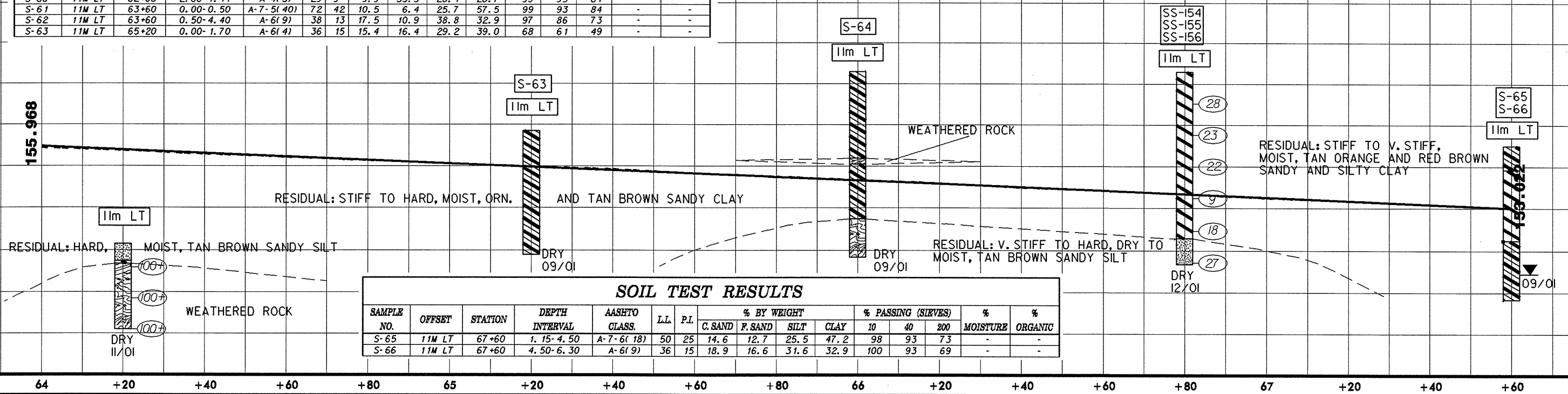
+40 +60 +80 61 +20 +40 +60 +80 62 +20 +40 +60 +80 63 +20 +40 +60 +80 64

**SOIL TEST RESULTS**

SAMPLE NO.	OFFSET	STATION	DEPTH INTERVAL	AASHTO CLASS.	LL	P.I.	% BY WEIGHT				% PASSING (SIEVES)			% MOISTURE	% ORGANIC
							C. SAND	F. SAND	SILT	CLAY	10	40	200		
S-59	11M LT	62+00	1.70-2.60	A-7-6(28)	57	33	3.9	17.2	27.5	51.3	100	100	81	-	-
S-60	11M LT	62+00	2.60-4.11	A-4(3)	29	9	9.9	33.3	28.1	28.7	99	95	61	-	-
S-61	11M LT	63+60	0.00-0.50	A-7-5(40)	72	42	10.5	6.4	25.7	57.5	99	93	84	-	-
S-62	11M LT	63+60	0.50-4.40	A-6(9)	38	13	17.5	10.9	38.8	32.9	97	86	73	-	-
S-63	11M LT	65+20	0.00-1.70	A-6(4)	36	15	15.4	16.4	29.2	39.0	68	61	49	-	-

**SOIL TEST RESULTS**

SAMPLE NO.	OFFSET	STATION	DEPTH INTERVAL	AASHTO CLASS.	LL	P.I.	% BY WEIGHT				% PASSING (SIEVES)			% MOISTURE	% ORGANIC
							C. SAND	F. SAND	SILT	CLAY	10	40	200		
S-64	11M LT	66+00	2.15-4.20	A-6(5)	32	12	5.3	38.0	30.0	26.7	99	97	60	-	-
SS-154	11M LT	66+80	0.00-4.10	A-7-5(29)	63	33	11.8	10.0	32.1	46.0	100	95	80	-	-
SS-155	11M LT	66+80	4.10-8.00	A-7-6(10)	41	14	17.6	12.6	41.7	28.0	100	92	72	-	-
SS-156	11M LT	66+80	8.00-9.23	A-4(2)	31	6	23.0	18.0	44.9	14.0	99	88	62	-	-



**SOIL TEST RESULTS**

SAMPLE NO.	OFFSET	STATION	DEPTH INTERVAL	AASHTO CLASS.	LL	P.I.	% BY WEIGHT				% PASSING (SIEVES)			% MOISTURE	% ORGANIC
							C. SAND	F. SAND	SILT	CLAY	10	40	200		
S-65	11M LT	67+60	1.15-4.50	A-7-6(18)	50	25	14.6	12.7	25.5	47.2	98	93	73	-	-
S-66	11M LT	67+60	4.50-6.30	A-6(9)	36	15	18.9	16.6	31.6	32.9	100	93	69	-	-

64 +20 +40 +60 +80 65 +20 +40 +60 +80 66 +20 +40 +60 +80 67 +20 +40 +60