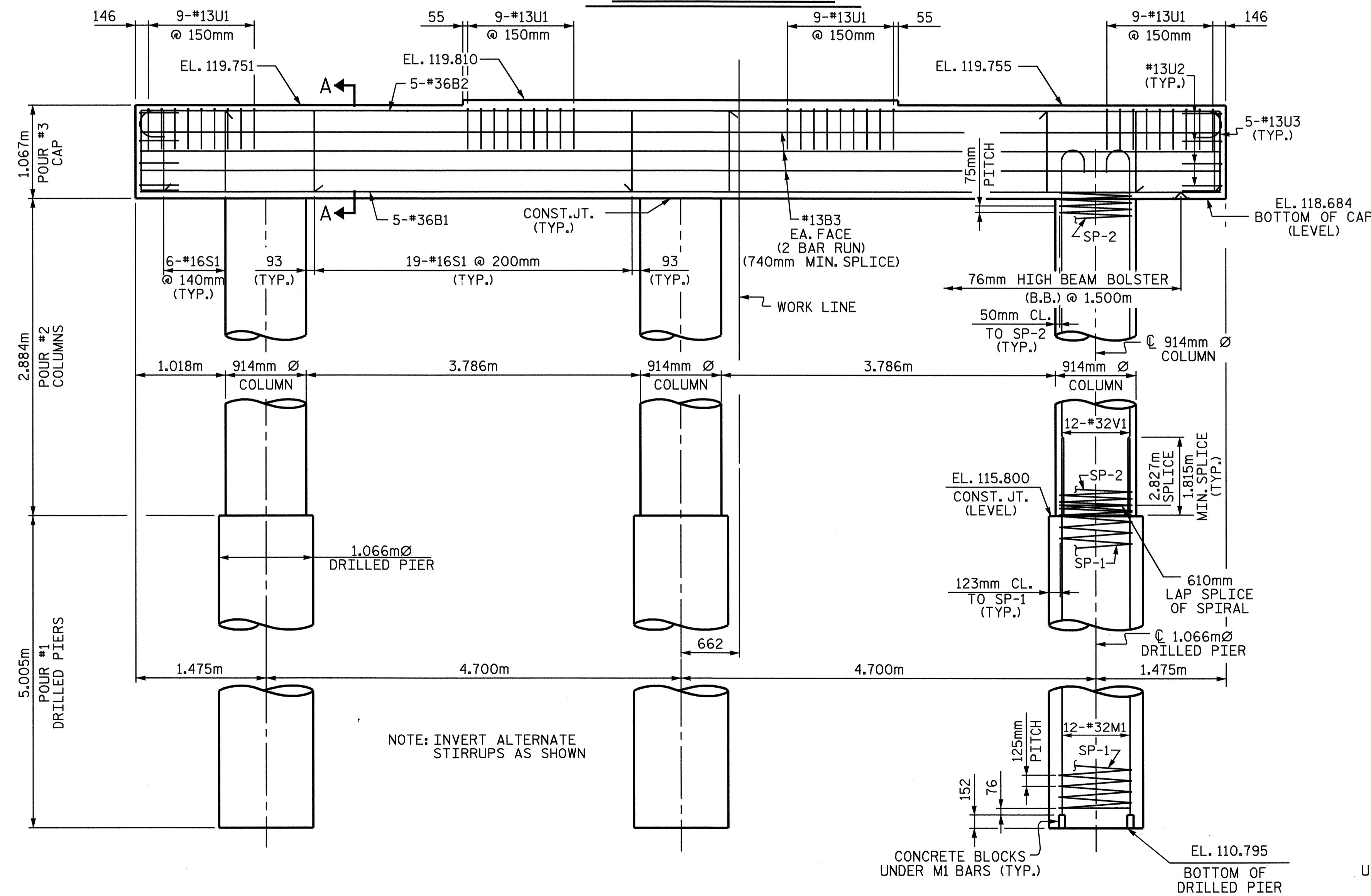
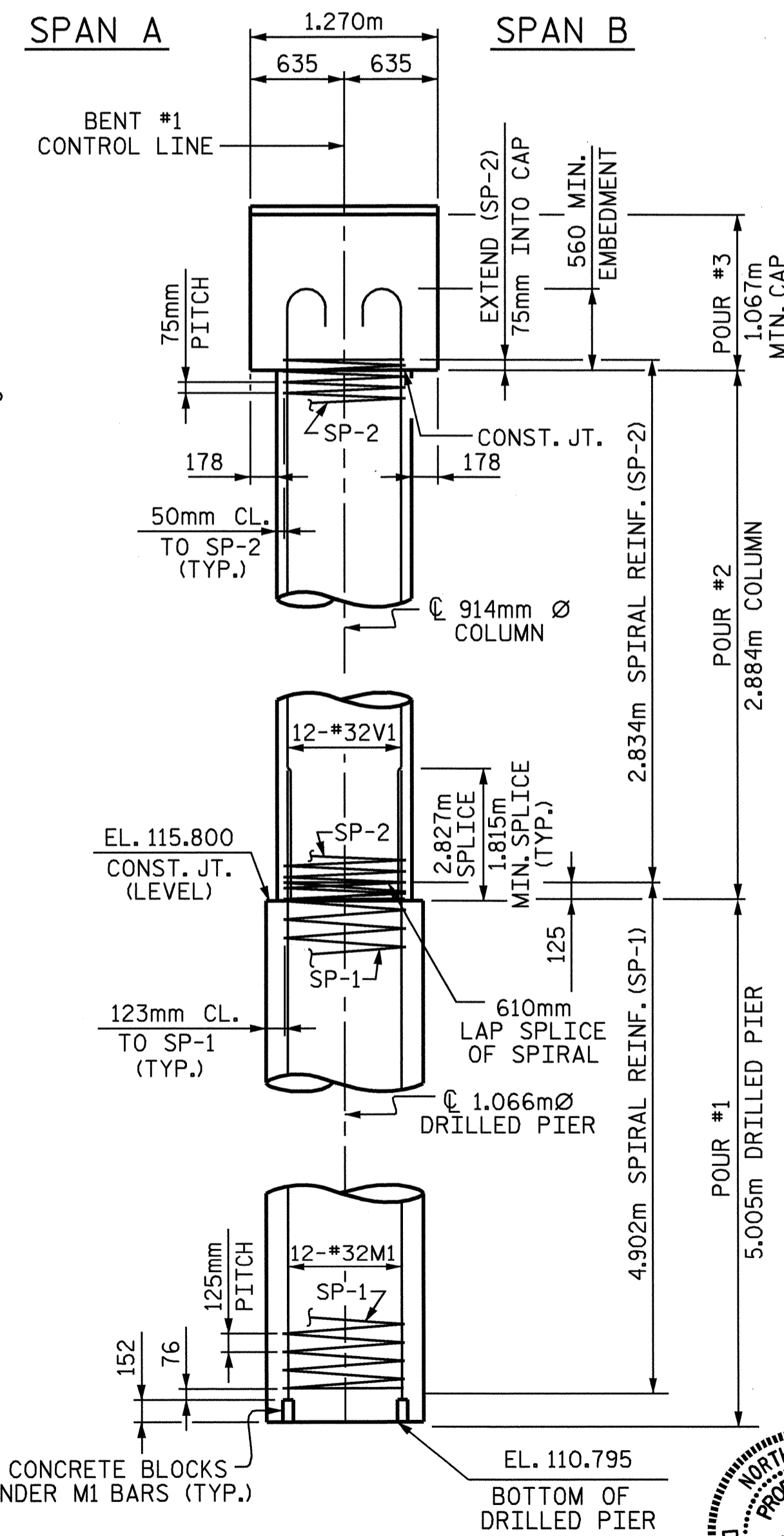


PLAN OF CAP



ELEVATION

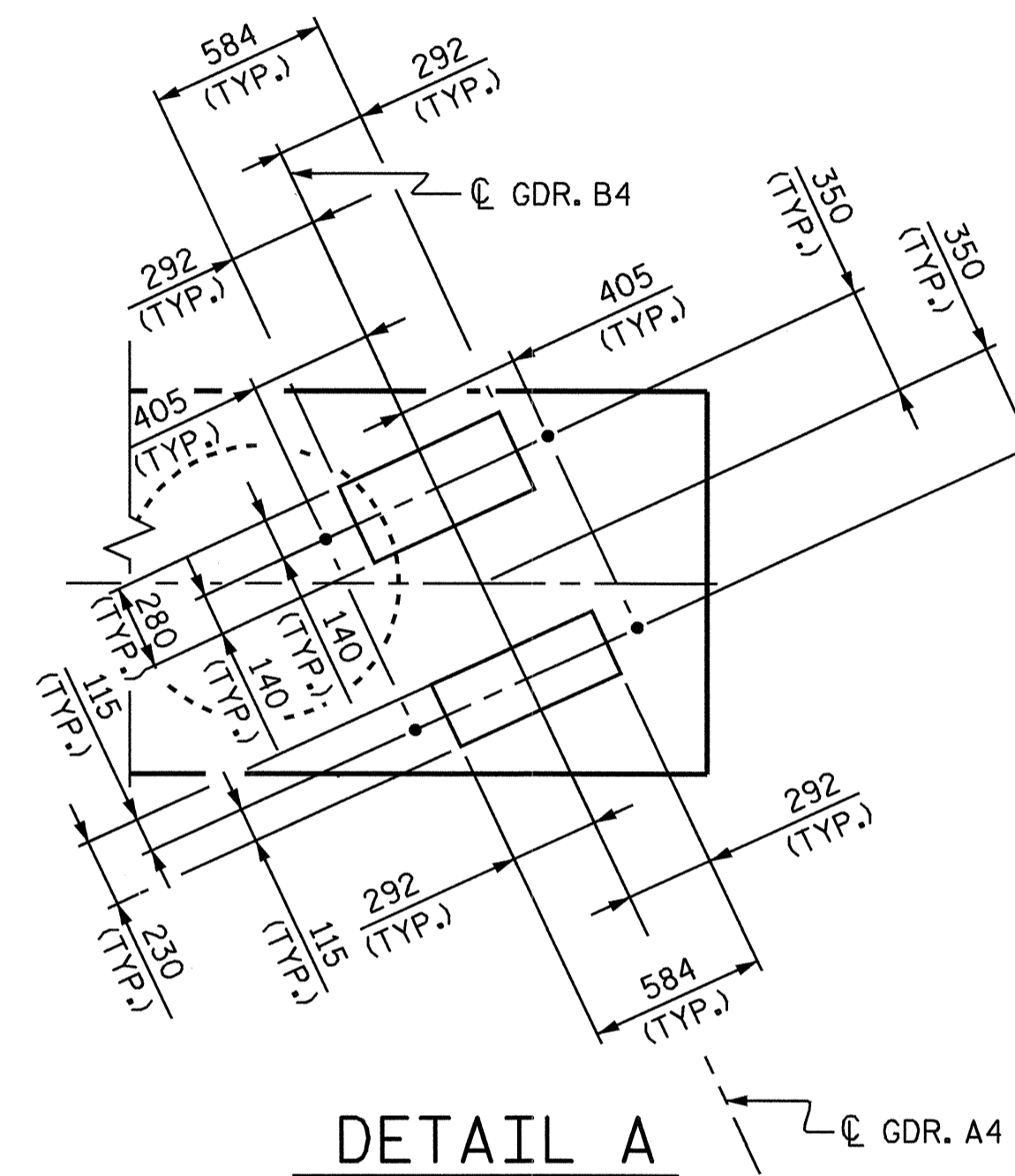
ALL COLUMNS AND DRILLED PIERS ARE IDENTICAL



RIGHT END ELEVATION

NOTES

STIRRUPS IN CAP MAY BE SHIFTED AS NECESSARY TO CLEAR ANCHOR BOLTS.
 HOOKS ON "V" BARS MAY BE TURNED AS NECESSARY FOR PLACING REINFORCING STEEL.
 FOR DRILLED PIERS, SEE SPECIAL PROVISIONS.
 ALL STEEL IN THE DRILLED PIERS IS INCLUDED IN THE PAY ITEMS FOR "REINFORCING STEEL" AND "SPIRAL COLUMN REINFORCING STEEL".
 THE CONTRACTORS ATTENTION IS CALLED TO THE FACT THAT THE LONGITUDINAL REINFORCEMENT FOR THE DRILLED PIERS IS DETAILED WITH ONE METER OF EXTRA LENGTH.
 FOR PERMANENT STEEL CASING, SEE SPECIAL PROVISION FOR DRILLED PIERS.
 THE LOCATION OF THE CONSTRUCTION JOINT IN THE DRILLED PIER IS BASED ON AN APPROXIMATE GROUND LINE ELEVATION. IF THE CONSTRUCTION JOINT IS ABOVE THE ACTUAL GROUND LINE ELEVATION, THE CONTRACTOR SHALL PLACE THE CONSTRUCTION JOINT 300mm BELOW THE GROUND LINE.



DETAIL A

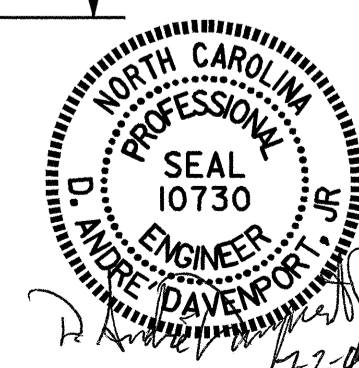
DRAWN BY : H. TOM BARBOUR DATE : 5-27-04
 CHECKED BY : S. P. LAM DATE : 6-04

02-JUL-2004 11:06
 w:\squad\N\2610b\barbour\Microstation\strconcrete\R-2610B_sd.B*.01.dgn
 adavenport

PROJECT NO. R-2610B
 CHATHAM COUNTY
 STATION: 22+83.400-L-

SHEET 1 OF 2
 DEPARTMENT OF TRANSPORTATION
 RALEIGH

SUBSTRUCTURE BENT #1					
REVISIONS					
NO.	BY:	DATE:	NO.	BY:	DATE:
1			3		
2			4		
SHEET NO. S-20					TOTAL SHEETS 60



STR. #1