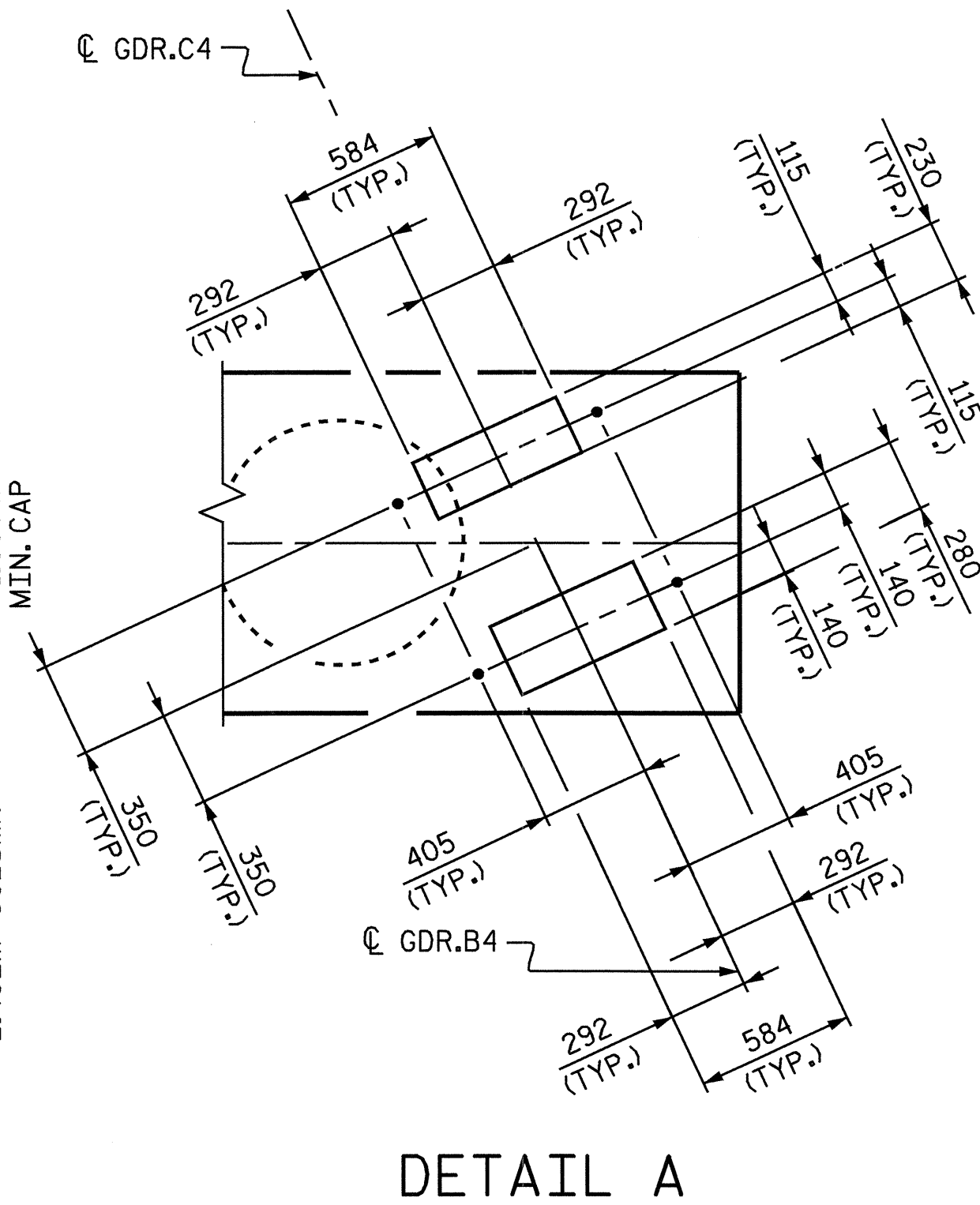
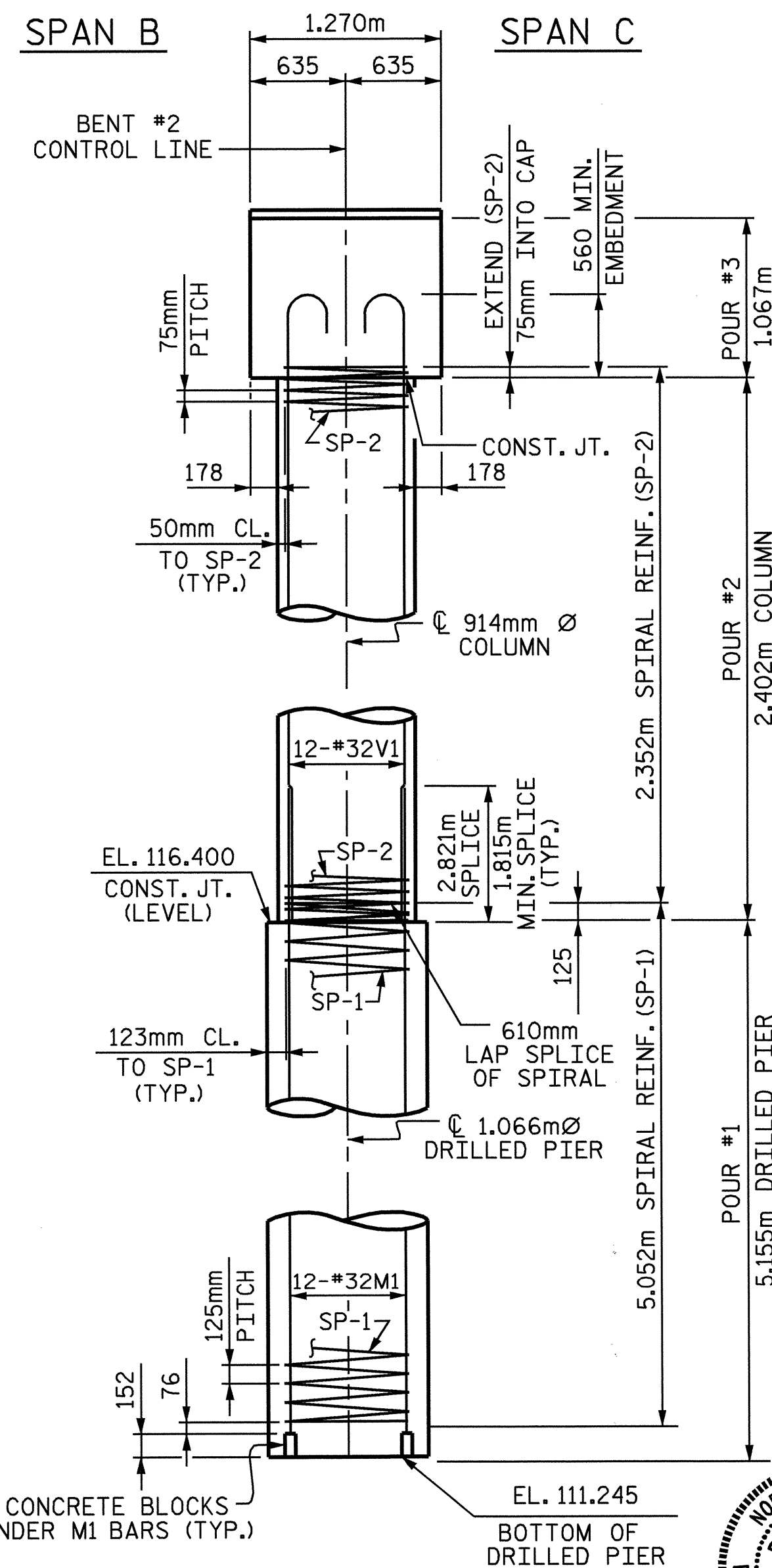
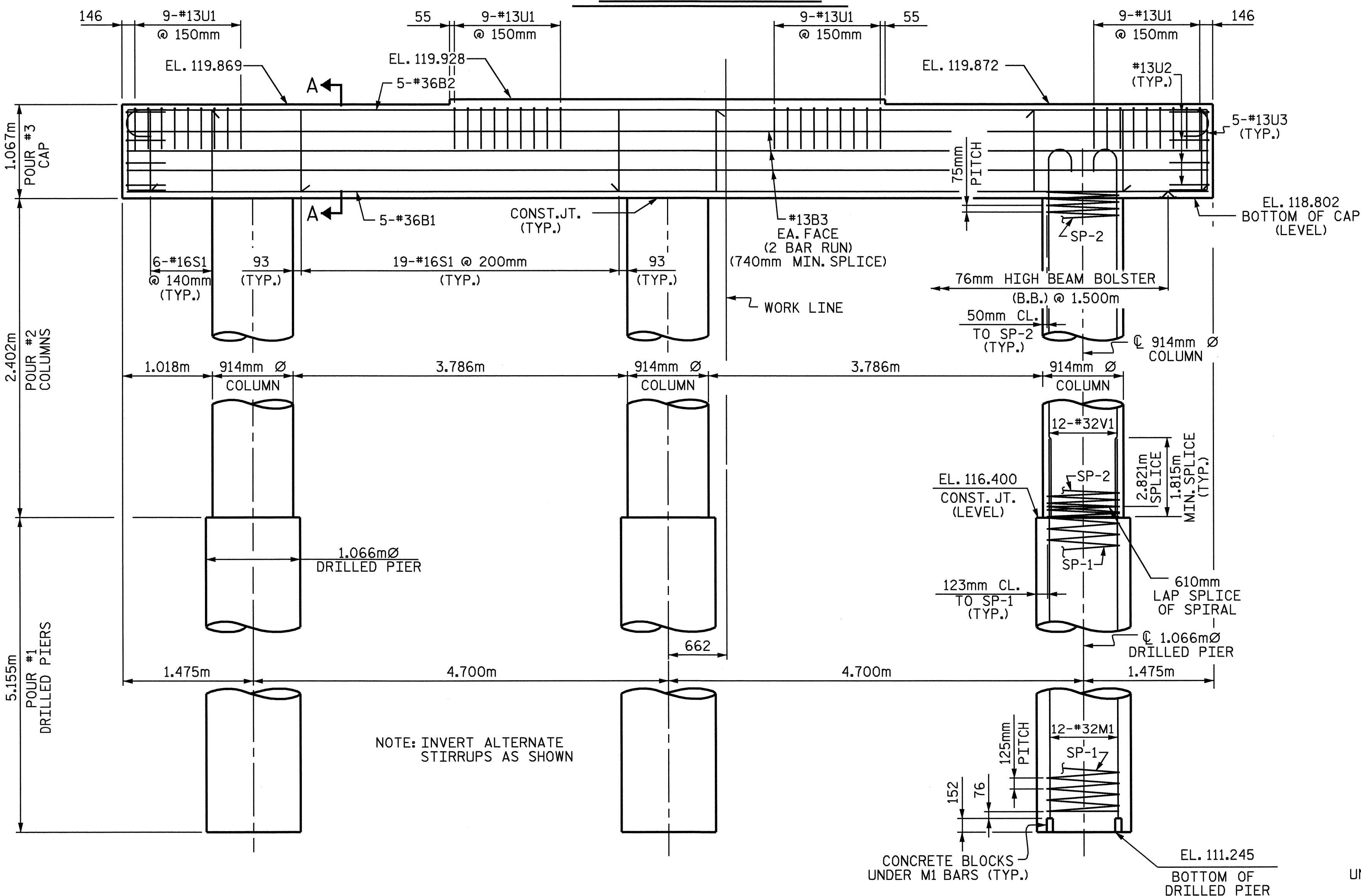


**NOTES**

STIRRUPS IN CAP MAY BE SHIFTED AS NECESSARY TO CLEAR ANCHOR BOLTS.  
 HOOKS ON "V" BARS MAY BE TURNED AS NECESSARY FOR PLACING REINFORCING STEEL.  
 FOR DRILLED PIERS, SEE SPECIAL PROVISIONS.  
 ALL STEEL IN THE DRILLED PIERS IS INCLUDED IN THE PAY ITEMS FOR "REINFORCING STEEL" AND "SPIRAL COLUMN REINFORCING STEEL".  
 THE CONTRACTOR'S ATTENTION IS CALLED TO THE FACT THAT THE LONGITUDINAL REINFORCEMENT FOR THE DRILLED PIERS IS DETAILED WITH ONE METER OF EXTRA LENGTH.  
 FOR PERMANENT STEEL CASING, SEE SPECIAL PROVISION FOR DRILLED PIERS.  
 THE LOCATION OF THE CONSTRUCTION JOINT IN THE DRILLED PIER IS BASED ON AN APPROXIMATE GROUND LINE ELEVATION. IF THE CONSTRUCTION JOINT IS ABOVE THE ACTUAL GROUND LINE ELEVATION, THE CONTRACTOR SHALL PLACE THE CONSTRUCTION JOINT 300mm BELOW THE GROUND LINE.



PROJECT NO. R-2610B  
 CHATHAM COUNTY  
 STATION: 22+83.400-L-

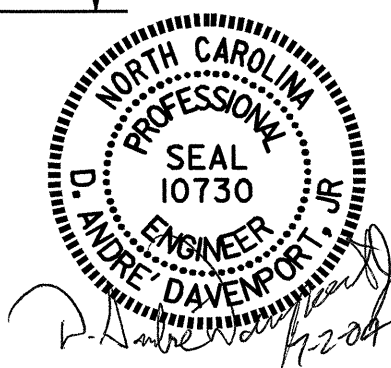
SHEET 1 OF 2

STATE OF NORTH CAROLINA  
 DEPARTMENT OF TRANSPORTATION  
 RALEIGH

**SUBSTRUCTURE BENT #2**

REVISIONS				SHEET NO.
NO.	BY:	DATE:	NO.	DATE:
1			3	
2			4	

TOTAL SHEETS: 60



DRAWN BY: H. TOM BARBOUR DATE: 5-27-04  
 CHECKED BY: S.P. LAM DATE: 6-04

02-JUL-2004 11:07  
 W:\squad\2610b\tbarbour\Microstation\strconcrete\R-2610B.ed.B\*.ol.dgn  
 addavenport

STR. #1