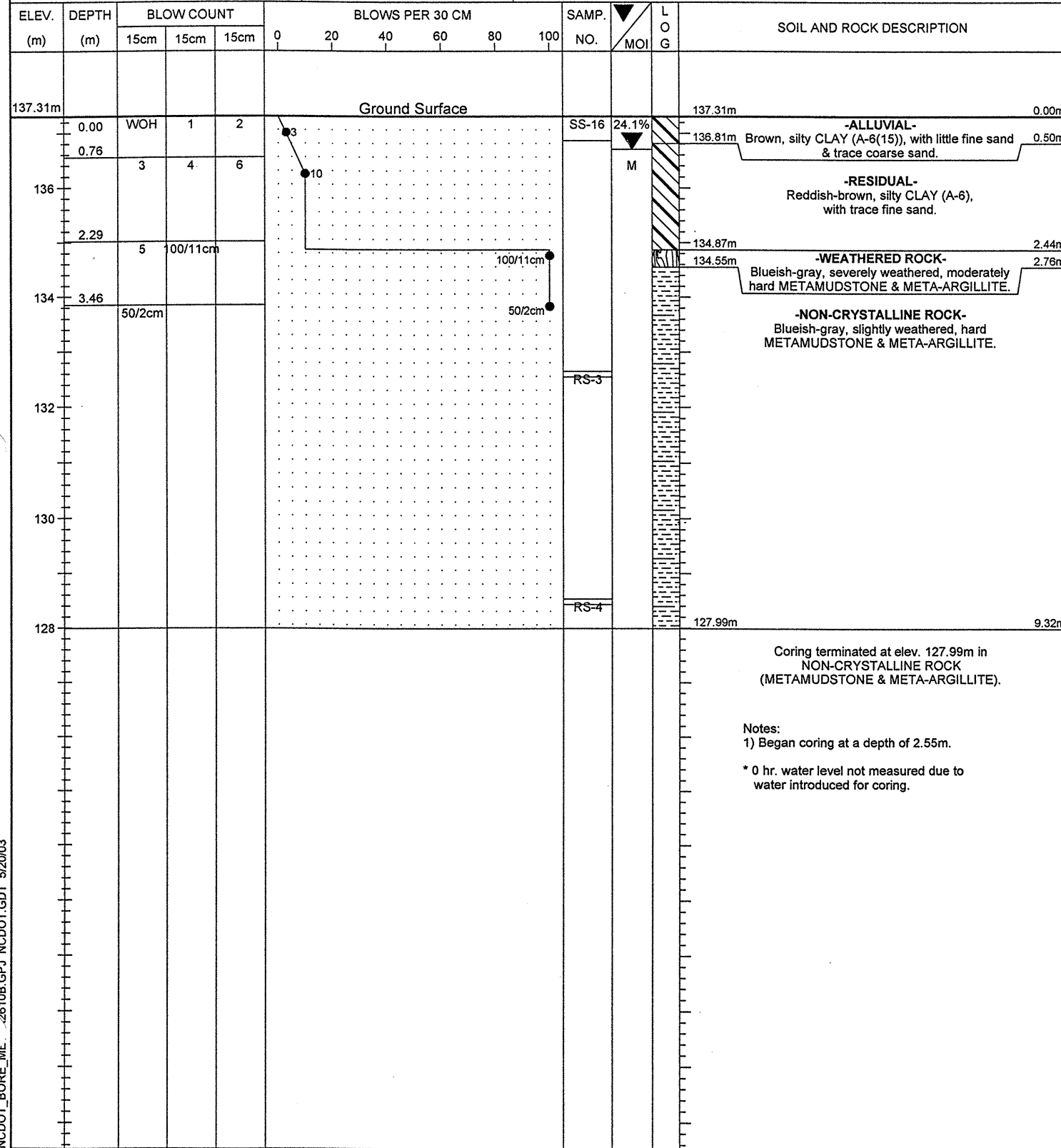




**FROEHLING & ROBERTSON, INC.**  
 GEOTECHNICAL • ENVIRONMENTAL • MATERIALS  
 ENGINEERS • LABORATORIES  
 "OVER ONE HUNDRED YEARS OF SERVICE"

N.C.D.O.T. GEOTECHNICAL UNIT  
 BORING LOG

PROJECT NO. 6.529005T	ID. R-2610B(2)	COUNTY Chatham	GEOLOGIST C. Baldwin
SITE DESCRIPTION Bridge on SBL US 421 (-L-) over Tick Creek			GROUND WATER (m)
BORING NO. B1-B	BORING LOCATION 96+92.2	OFFSET 4.6m Lt.	ALIGNMENT -L-
COLLAR ELEV. 137.31 m	NORTHING 211,979.0	EASTING 573,296.5	0 HR. N/A* 24 HR. 0.61
TOTAL DEPTH 9.32 m	DRILL MACHINE CME 550	DRILL METHOD 5.7cm ID HSA/NQ3 Core	HAMMER TYPE Automatic
DATE STARTED 4/22/03	COMPLETED 4/22/03	SURFACE WATER DEPTH N/A	



NCDOT\_BORE\_ML\_2610B.OPJ NCDOT.GDT 5/20/03

CORE BORING REPORT							DATE: 04/22/2003
PROJECT:	6.529005T	ID. NO.:	R-2610 B (2)	BORING NO.:	B1-B	GEOLOGIST:	Chris Baldwin
DESCRIPTION:	Bridge on SBL US 421 (-L-) over Tick Creek				SENIOR DRILLER: J.W. Gilchrist, Jr.		
COUNTY:	Chatham	COLLAR ELEVATION:	137.31m	TOTAL DEPTH:	9.32m	DRILLING ASSISTANT: M.W. Renza	
Elev. (m)	Depth (m)	Drill Rate min./0.3m	Run Length (m)	REC (%)	RQD (%)	Sample #	FIELD CLASSIFICATION AND REMARKS
134.76	2.55	5:47/0.31m	0.91	0.77/0.91	0.00/0.91		WR - 2.55-2.76m Blueish gray, severely weathered, moderately hard Metamudstone and Meta-Argillite Very close to close fracture spacing. 1 joint at 0°
		5:25		85%	0%		STRATA BREAK STRATA REC.=38% STRATA RQD.=N/A
		5:24					
133.85	3.46						SPT taken from 3.46-3.48m (N Value=50/2cm) Metamudstone and Meta-Argillite
133.83	3.48	5:44/0.32m	1.52	1.46/1.52	0.43/1.52		NCR - 2.76-9.32m Blueish gray, slightly weathered, hard Metamudstone and Meta-Argillite Close to wide fracture spacing.
		5:39		96%	28%		
		5:30				RS-3	RS-3 4.66-4.76m, qu = 11,789 kPa
		5:40					
		5:42					
132.31	5.00						STRATA REC.=98% STRATA RQD.=70%
132.31	5.00	5:49/0.32m	1.52	1.52/1.52	1.52/1.52		
		5:42		100%	100%		
		5:47					
		5:50					3 joints at 0° 1 joint at 10° 6 joints at 40° 4 joints at 50° 7 joints at 60° 2 joints at 90°
		5:46					
130.79	6.52						
130.79	6.52	5:49/0.32m	1.52	1.52/1.52	1.52/1.52		
		5:43		100%	100%		
		5:47					
		5:49					
		5:48					
129.27	8.04						
129.27	8.04	1:08/0.08m	1.28	1.19/1.28	1.09/1.28		
		5:43		93%	85%		
		5:40					
		5:47				RS-4	RS-4 8.78-8.88m, qu = 30,225 kPa
		5:41					
127.99	9.32						Coring terminated at elevation 127.99m
DRILLING EQUIPMENT: CME - 550 ATV with automatic hammer.							NOTES: 1.) Missing core from 9.23-9.32m fell out of core barrel in hole and was unretrievable. 2.) Lifter was replaced
HOLE ADVANCEMENT: 1. HSA from 0.00 - 2.55 meters using 8.26cm hollow stem augers. 2. Cored using NQ3 w/SICB and a Series 2 diamond impregnated bit from 2.55-9.32 meters.							