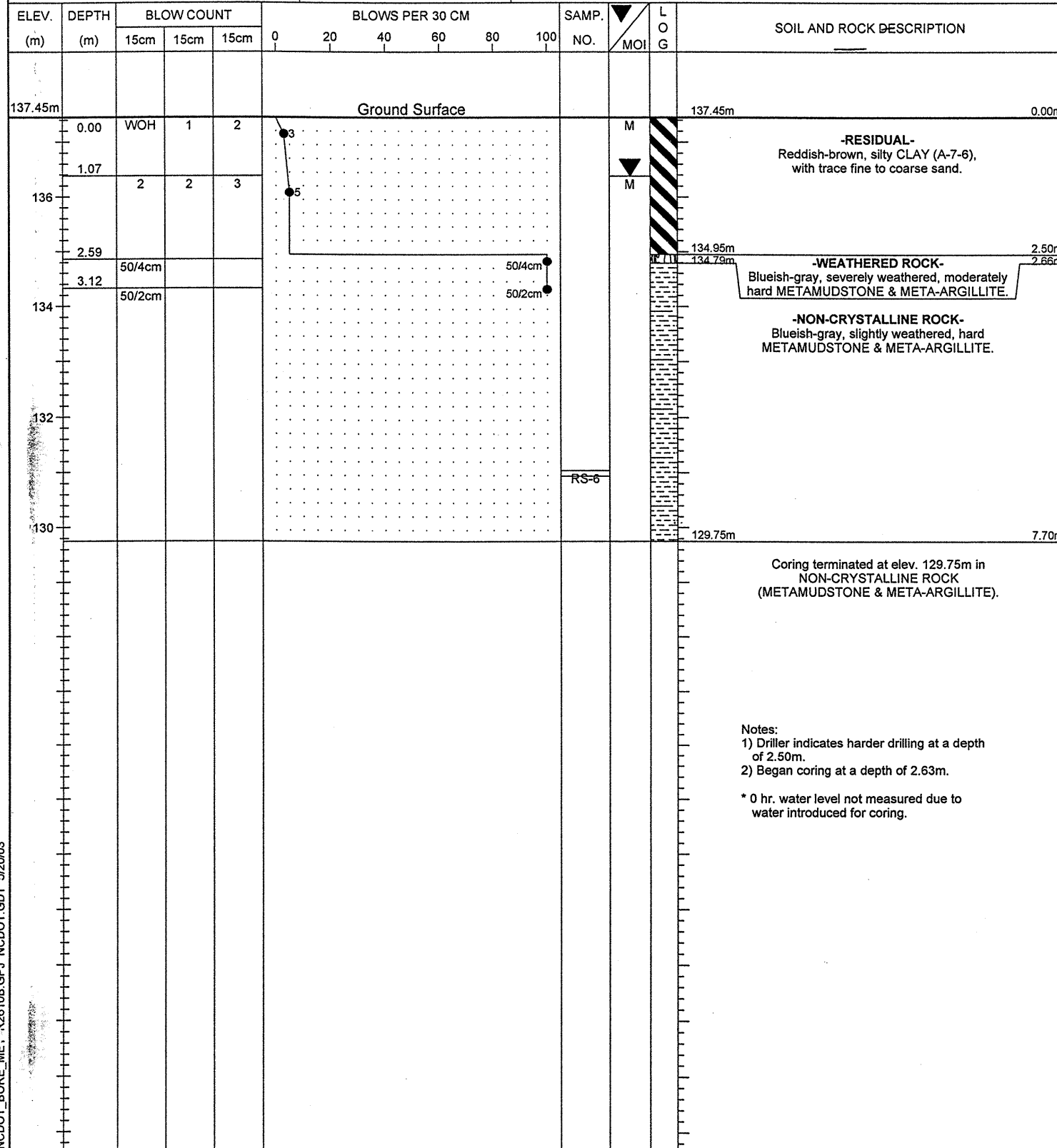




FROEHLING & ROBERTSON, INC.
 GEOTECHNICAL • ENVIRONMENTAL • MATERIALS
 ENGINEERS • LABORATORIES
 "OVER ONE HUNDRED YEARS OF SERVICE"

N.C.D.O.T. GEOTECHNICAL UNIT
 BORING LOG

PROJECT NO. 6.529005T	ID. R-2610B(2)	COUNTY Chatham	GEOLOGIST C. Baldwin
SITE DESCRIPTION Bridge on SBL US 421 (-L-) over Tick Creek			GROUND WATER (m)
BORING NO. B2-B	BORING LOCATION 97+05.9	OFFSET 7.0m Lt.	ALIGNMENT -L-
		0 HR. N/A*	24 HR. 1.07
COLLAR ELEV. 137.45 m	NORTHING 211,987.6	EASTING 573,285.6	
TOTAL DEPTH 7.70 m	DRILL MACHINE CME 550	DRILL METHOD 5.7cm ID HSA/NQ3 Core	HAMMER TYPE Automatic
DATE STARTED 4/24/03	COMPLETED 4/24/03	SURFACE WATER DEPTH N/A	



Notes:
 1) Driller indicates harder drilling at a depth of 2.50m.
 2) Began coring at a depth of 2.63m.
 * 0 hr. water level not measured due to water introduced for coring.

NCDOT_BORE_ME.1..R-2610B.GPJ NCDOT.GDT 5/20/03

CORE BORING REPORT							DATE: 04/24/2003	
PROJECT:	6.529005T		ID. NO.:	R-2610 B (2)		BORING NO.:	B2-B	
DESCRIPTION:	Bridge on SBL US 421 (-L-) over Tick Creek						GEOLOGIST: Chris Baldwin	
COUNTY:	Chatham		COLLAR ELEVATION:	137.45m		TOTAL DEPTH:	7.70m	
SENIOR DRILLER: J.W. Gilchrist, Jr.						DRILLING ASSISTANT: M.W. Renza		
Elev. (m)	Depth (m)	Drill Rate min./0.3m	Run Length (m)	REC (%)	RQD (%)	Sample #	FIELD CLASSIFICATION AND REMARKS	
134.82	2.63	2:19/0.19m	0.49	0.46/0.49	0.34/0.49		WR - 2.63-2.66m Blueish gray, severely weathered, moderately hard Metamudstone and Meta-Argillite Very close fracture spacing.	
		5:35		94%	69%		STRATA BREAK STRATA REC.=0% STRATA ROD.=N/A 134.79m (2.66m)	
134.33	3.12	SPT taken from 3.12-3.14m (N Value=50/2cm) Metamudstone and Meta-Argillite						
134.31	3.14	5:42/0.32m	1.52	1.52/1.52	1.26/1.52		NCR - 2.66-7.70m Blueish gray, slightly weathered, hard Metamudstone and Meta-Argillite Close to moderately close fracture spacing.	
		5:35		100%	83%		3 joints at 0° 2 joints at 30° 3 joints at 40° 2 joints at 60° 2 joints at 70°	
		5:41					STRATA REC.=100% STRATA RQD.=88%	
		5:39						
		5:41						
132.79	4.66							
132.79	4.66	5:51/0.32m	1.52	1.52/1.52	1.52/1.52			
		5:45		100%	100%			
		5:47						
		5:50						
		5:49						
131.27	6.18							
131.27	6.18	5:56/0.32m	1.52	1.52/1.52	1.30/1.52	RS-6	RS-6 6.41-6.51m, qu = 57,544 kPa	
		5:49		100%	86%			
		5:51						
		5:47						
		5:48						
129.75	7.70	Coring terminated at elevation 129.75m						

DRILLING EQUIPMENT:
 CME - 550 ATV with automatic hammer.
 HOLE ADVANCEMENT:
 1. HSA from 0.00 - 2.63 meters using 8.26cm hollow stem augers.
 2. Cored using NQ3 w/SICB and a Series 2 diamond impregnated bit from 2.63 - 7.70 meters.

NOTES: