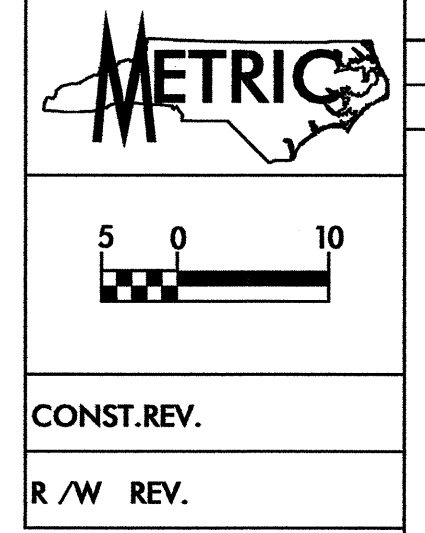


-Y12-  
 PI Sta 12+39.905  
 $\Delta = 4'09''12.4''$  (LT)  
 $L = 48.663$   
 $T = 24.342$   
 $R = 671.294$



PROJECT REFERENCE NO.	SHEET NO.
R-2610 B	EC-16/CONST.17
R/W SHEET NO.	
ROADWAY DESIGN ENGINEER	HYDRAULICS ENGINEER

CLEARING AND GRUBBING  
 EROSION CONTROL FOR  
 CONSTRUCTION SHEET 17

NOTE:  
 PLACE TEMPORARY ROCK SEDIMENT DAMS TYPE-B  
 AND TEMPORARY ROCK SILT CHECKS TYPE-A AT  
 DRAINAGE OUTLETS.

6 x 3 x 1  
 1.5 weir

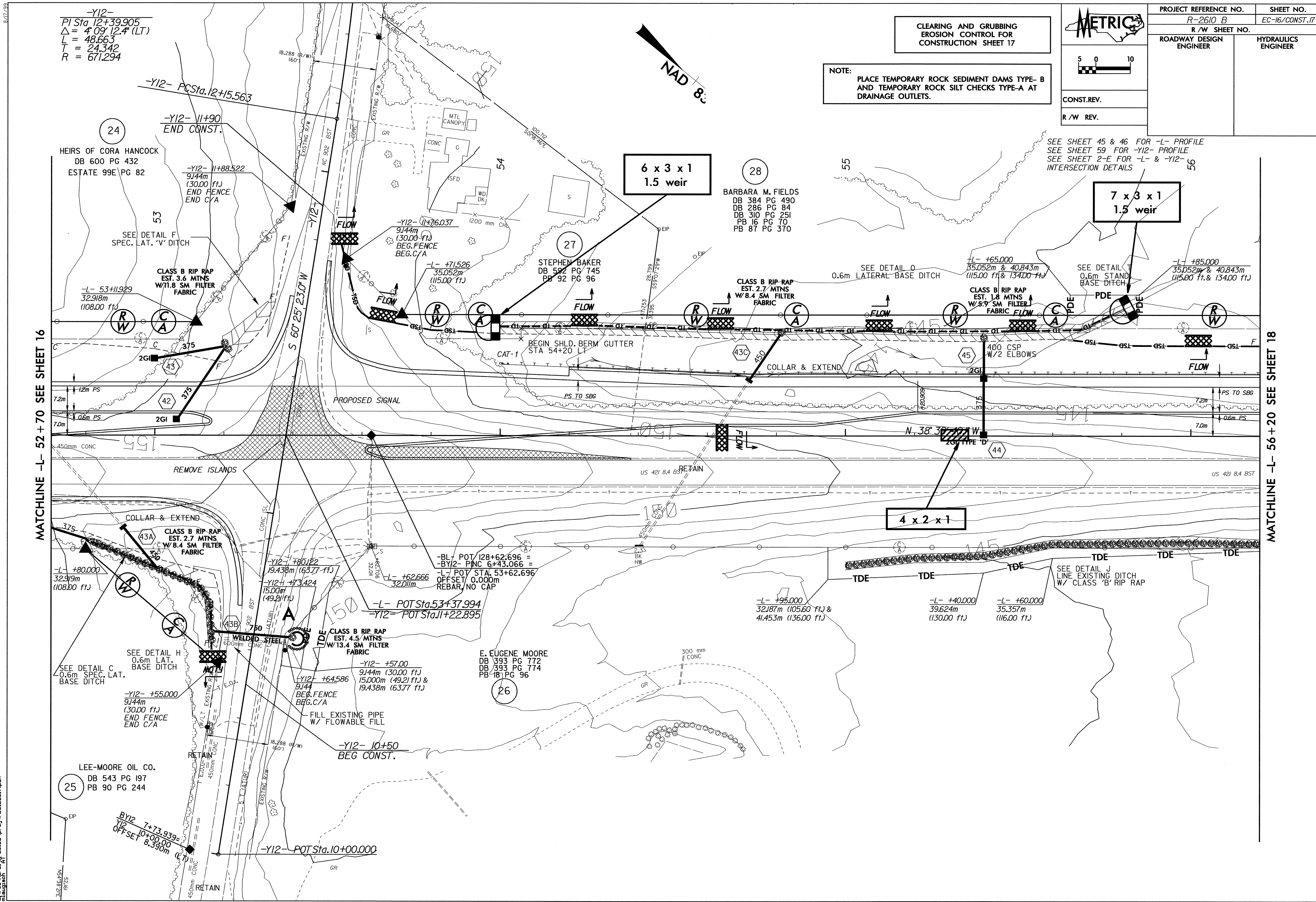
7 x 3 x 1  
 1.5 weir

4 x 2 x 1

MATCHLINE -L- 52 + 70 SEE SHEET 16

MATCHLINE -L- 56 + 20 SEE SHEET 18

28-JAN-2004 10:18 AM  
 C:\Users\j... \Public\2610B\proj\17-2610B\17.pht



HEIRS OF CORA HANCOCK  
 DB 600 PG 432  
 ESTATE 99E PG 82

BARBARA M. FIELDS  
 DB 384 PG 490  
 DB 286 PG 84  
 DB 310 PG 251  
 PB 16 PG 70  
 PB 87 PG 370

STEPHEN BAKER  
 DB 592 PG 745  
 PB 92 PG 96

E. EUGENE MOORE  
 DB 393 PG 772  
 DB 393 PG 774  
 PB 18 PG 96

LEE-MOORE OIL CO.  
 DB 543 PG 197  
 PB 90 PG 244

SEE SHEET 45 & 46 FOR -L- PROFILE  
 SEE SHEET 59 FOR -Y12- PROFILE  
 SEE SHEET 2-E FOR -L- & -Y12-  
 INTERSECTION DETAILS

SEE DETAIL T  
 0.6m STAND  
 BASE DITCH

SEE DETAIL O  
 0.6m LATERAL-BASE DITCH

SEE DETAIL F  
 SPEC. LAT. 'V' DITCH

SEE DETAIL H  
 0.6m LAT.  
 BASE DITCH

SEE DETAIL C  
 0.6m SPEC. LAT.  
 BASE DITCH

SEE DETAIL J  
 LINE EXISTING DITCH  
 W/ CLASS 'B' RIP RAP

FILL EXISTING PIPE  
 W/ FLOWABLE FILL

BEGIN SHLD. BERM GUTTER  
 STA 54+20

COLLAR & EXTEND

COLLAR & EXTEND

PROPOSED SIGNAL

REMOVE ISLANDS

RETAIN

WELDED STEEL

CONC

CONC

CONC

CONC

CONC

CONC

CONC

CONC

CONC

CONC