

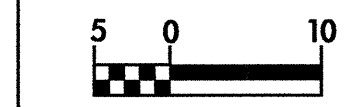
8/17/99

-Y19-
 PI Sta 10+65.575
 $\Delta = 88^\circ 37' 46.3" (LT)$
 $L = 30.938$
 $T = 19.527$
 $R = 20.000$

-SBL-
 PI Sta 126+44.665
 $\Delta = 16^\circ 22' 08.3" (LT)$
 $L = 314.262$
 $T = 158.208$
 $R = 1,000.000$

-SBL-
 PIs Sta 128+25.721
 $\Delta = 1^\circ 57' 11.8"$
 $Ls = 75.000$
 $LT = 50.003$
 $ST = 25.003$
 $SE = 045$

CLEARING AND GRUBBING
 EROSION CONTROL FOR
 CONSTRUCTION SHEET 38

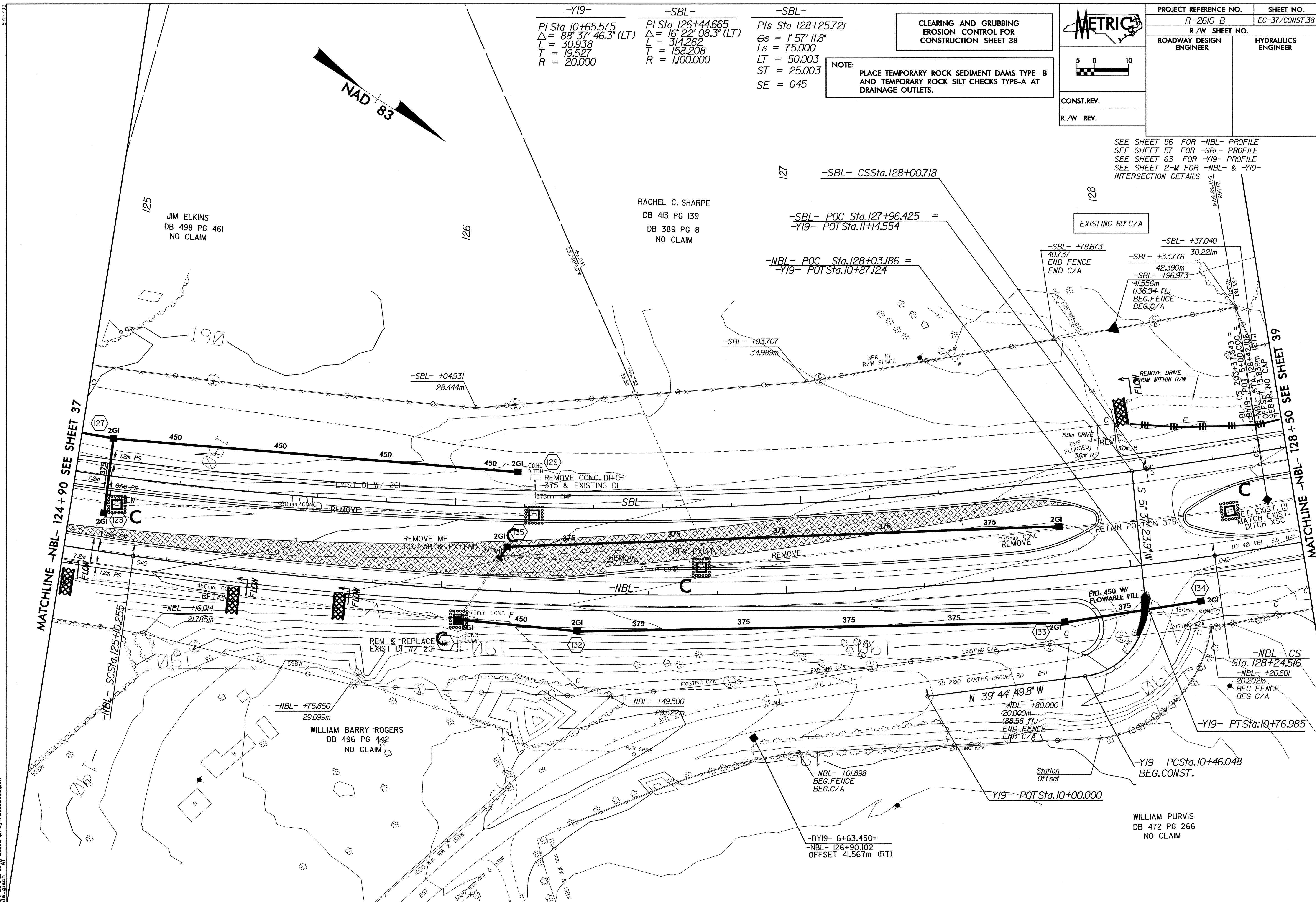


CONST.REV.
 R/W REV.

PROJECT REFERENCE NO. R-2610 B	SHEET NO. EC-37/CONST.38
R/W SHEET NO.	HYDRAULICS ENGINEER
ROADWAY DESIGN ENGINEER	

NOTE:
 PLACE TEMPORARY ROCK SEDIMENT DAMS TYPE- B
 AND TEMPORARY ROCK SILT CHECKS TYPE-A AT
 DRAINAGE OUTLETS.

SEE SHEET 56 FOR -NBL- PROFILE
 SEE SHEET 57 FOR -SBL- PROFILE
 SEE SHEET 63 FOR -Y19- PROFILE
 SEE SHEET 2-M FOR -NBL- & -Y19-
 INTERSECTION DETAILS



MATCHLINE -NBL- 124+90 SEE SHEET 37

MATCHLINE -NBL- 128+50 SEE SHEET 39

29-JAN-2004 14:14
 C:\pwork\2610b\pwork\2610b\38.dwg
 2610b\pwork\2610b\38.dwg