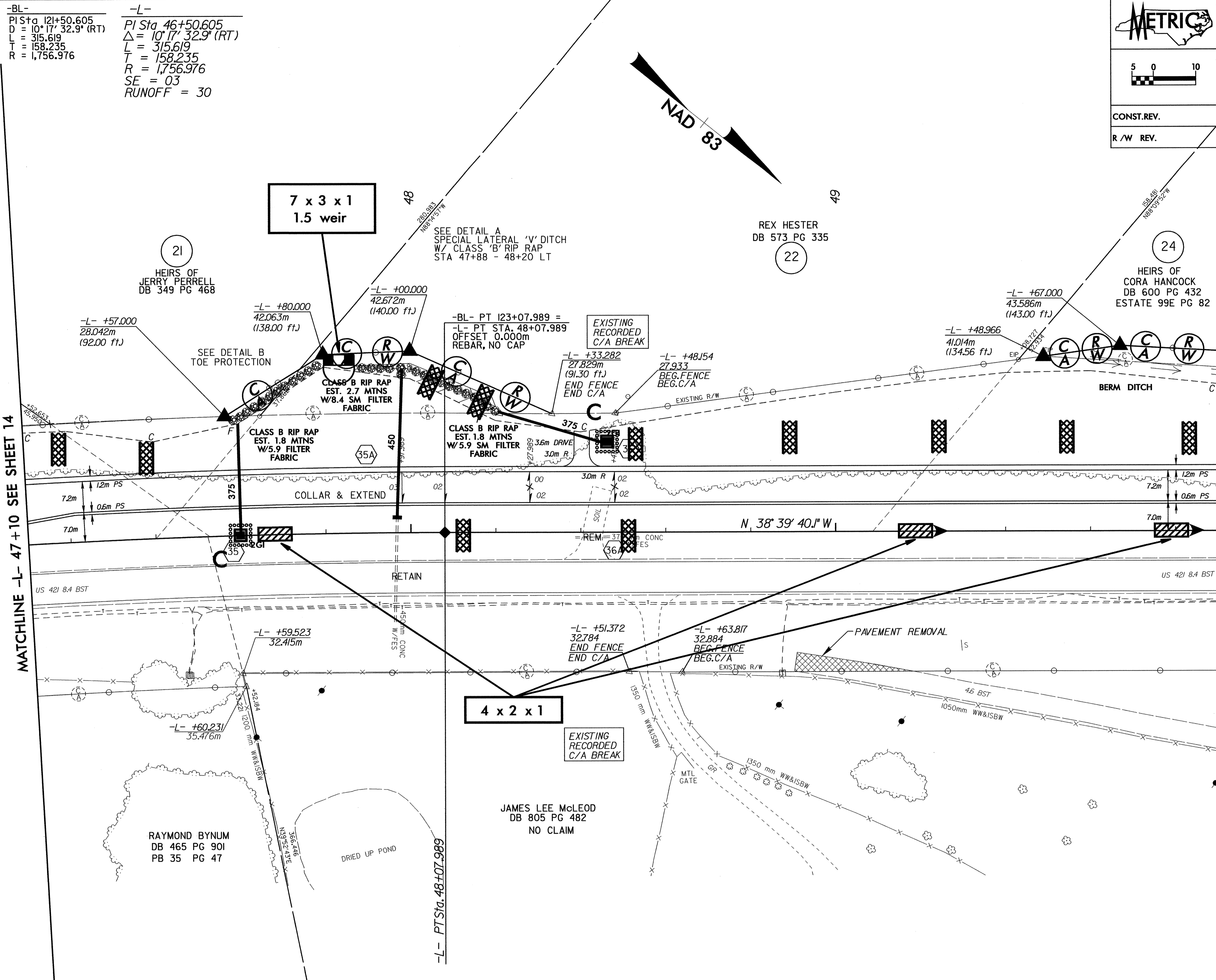


	PROJECT REFERENCE NO. R-2610 B	SHEET NO. EC-50/CONST.15
	R/W SHEET NO.	
	ROADWAY DESIGN ENGINEER	HYDRAULICS ENGINEER
CONST.REV.		
R/W REV.		

SEE SHEET 45 FOR -L- PROFILE
 SEE SHEET 2-D FOR -L- & -YII- INTERSECTION DETAILS



-BL-
 PI Sta 12+50.605
 D = 10° 17' 32.9" (RT)
 L = 315.619
 R = 158.235
 T = 1,756.976

-L-
 PI Sta 46+50.605
 $\Delta = 10^\circ 17' 32.9''$ (RT)
 L = 315.619
 R = 158.235
 T = 1,756.976
 SE = 03
 RUNOFF = 30

