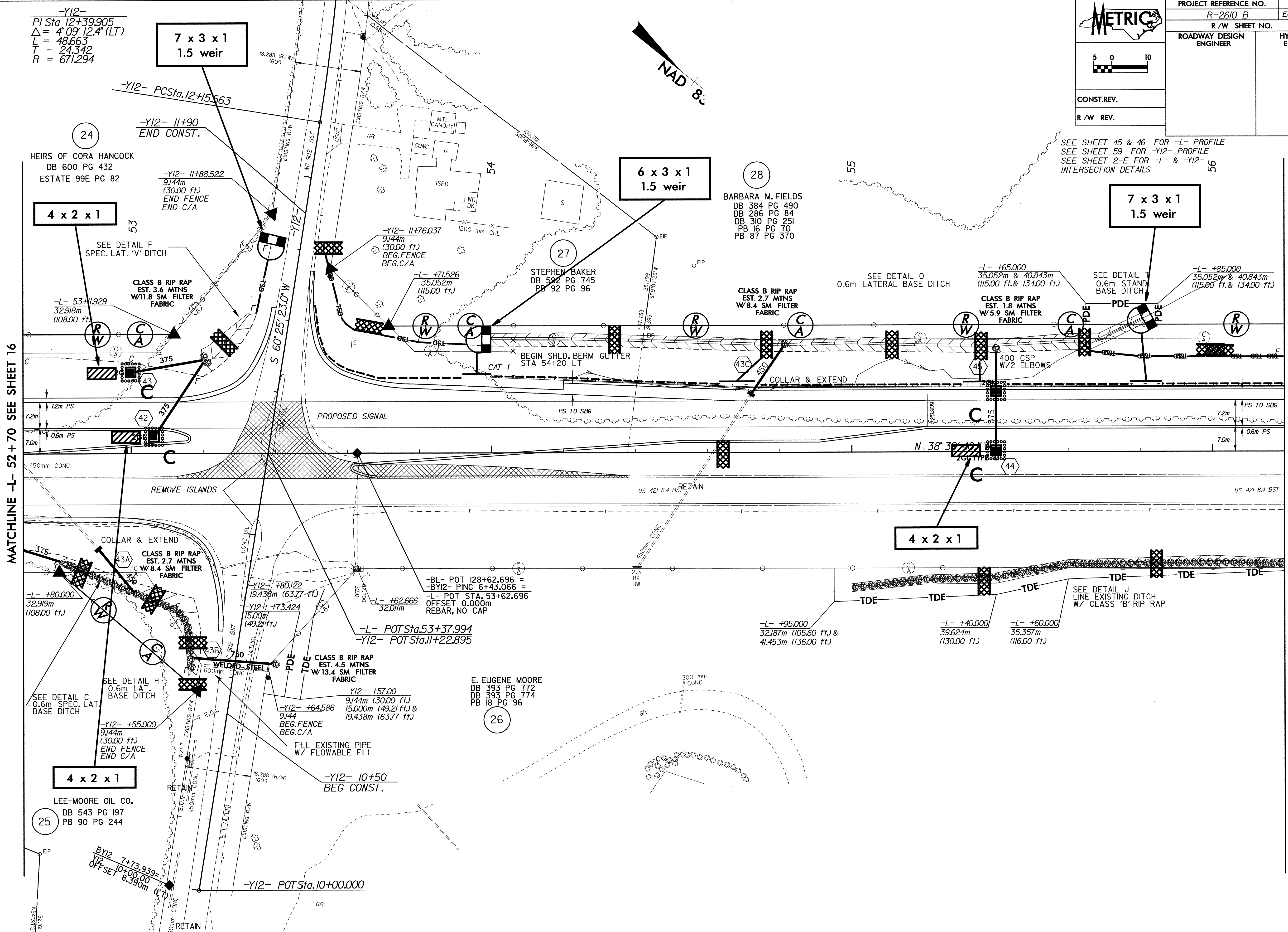


|                                   |                             |
|-----------------------------------|-----------------------------|
| PROJECT REFERENCE NO.<br>R-2610 B | SHEET NO.<br>EC-52/CONST.17 |
| R/W SHEET NO.                     |                             |
| ROADWAY DESIGN ENGINEER           | HYDRAULICS ENGINEER         |
| CONST. REV.                       |                             |
| R/W REV.                          |                             |

-Y12-  
PI Sta 12+39.905  
Δ = 4° 09' 12.4" (LT)  
L = 48.663  
T = 24.342  
R = 671.294

MATCHLINE -L- 52 + 70 SEE SHEET 16

MATCHLINE -L- 56 + 20 SEE SHEET 18



SEE SHEET 45 & 46 FOR -L- PROFILE  
SEE SHEET 59 FOR -Y12- PROFILE  
SEE SHEET 2-E FOR -L- & -Y12- INTERSECTION DETAILS

HEIRS OF CORA HANCOCK  
DB 600 PG 432  
ESTATE 99E PG 82

BARBARA M. FIELDS  
DB 384 PG 490  
DB 286 PG 84  
DB 310 PG 251  
PB 16 PG 70  
PB 87 PG 370

STEPHEN BAKER  
DB 592 PG 745  
PB 92 PG 96

E. EUGENE MOORE  
DB 393 PG 772  
DB 393 PG 774  
PB 18 PG 96

LEE-MOORE OIL CO.  
DB 543 PG 197  
PB 90 PG 244

28-JAN-2004 16:24  
City: Veneta, OR  
Project: 2610B  
User: vpr-cj  
File: v-2610b17.dwg  
MLA: gash