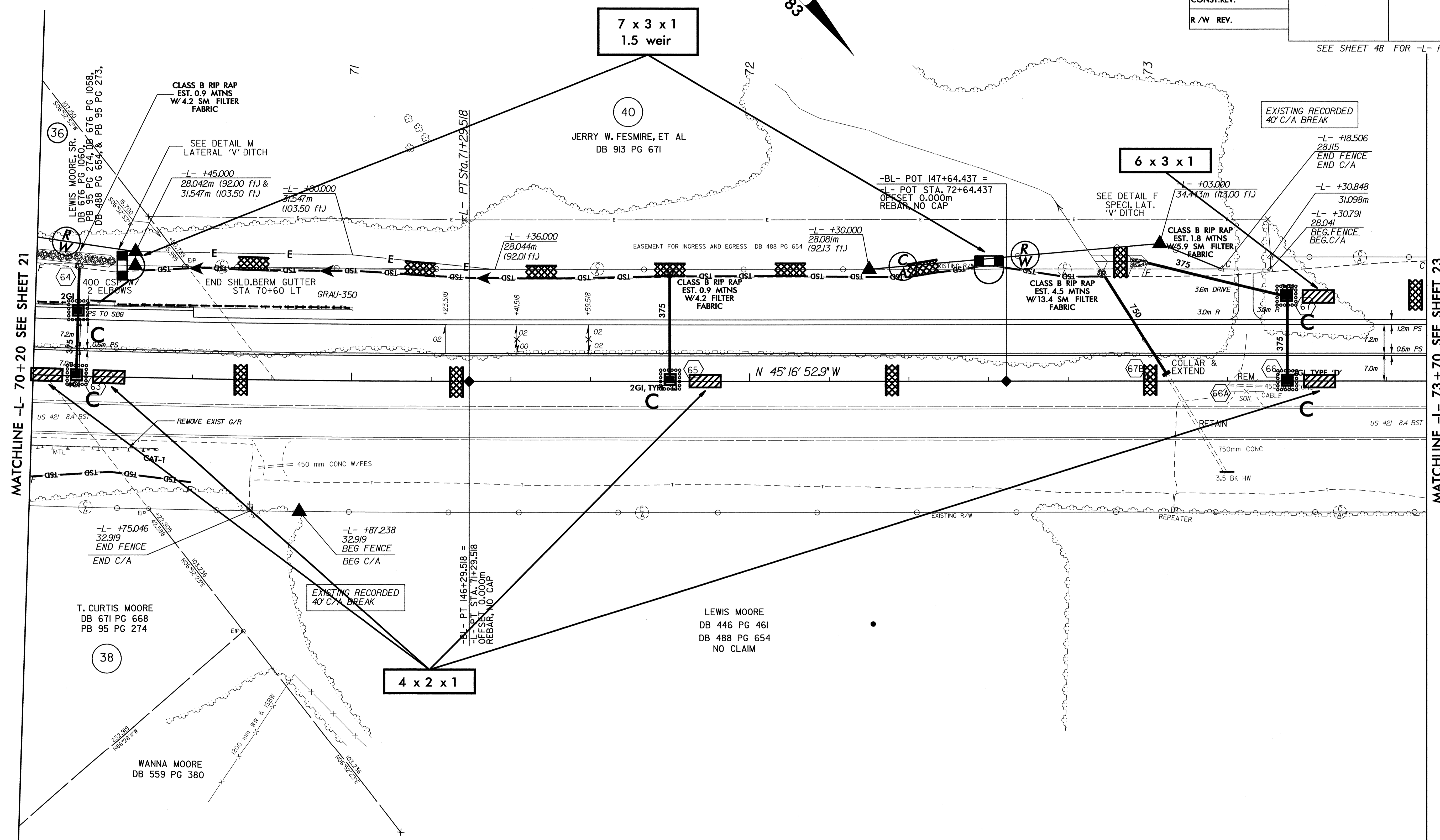
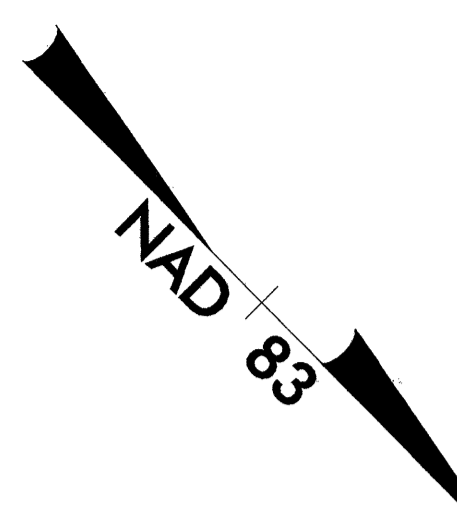
 5 0 10 CONST. REV. R/W REV.	PROJECT REFERENCE NO.	SHEET NO.
	R-2610 B	EC-57/CONST.22
	R/W SHEET NO.	
ROADWAY DESIGN ENGINEER	HYDRAULICS ENGINEER	

SEE SHEET 48 FOR -L- PROFILE

-BL-
 P/Sta 144+28.570
 D = 6° 37' 12.8" (LT)
 L = 402.343
 T = 201.396
 R = 3,482.152

-L-
 P/Sta 69+28.571
 Δ = 6° 37' 12.8" (LT)
 L = 402.343
 T = 201.396
 R = 3,482.152
 SE = 02
 RUNOFF = 18



MATCHLINE -L- 70+20 SEE SHEET 21

MATCHLINE -L- 73+70 SEE SHEET 23

29-JAN-2004 07:43
 d:\vnu\mural\p-2610b\p-2610b.dwg
 p-2610b.dwg
 p-2610b.dwg