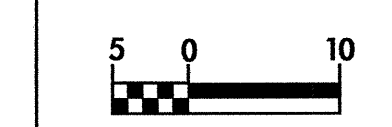


-BL-
 PI Sta 162+10.371
 D = 3' 06" 53.4" (RT)
 L = 190.456
 T = 95.252
 R = 3,503.352

-L-
 PI Sta 87+10.370
 Δ = 3' 06" 53.4" (RT)
 L = 190.456
 T = 95.252
 R = 3,503.352
 SE = 02
 RUNOFF = 18

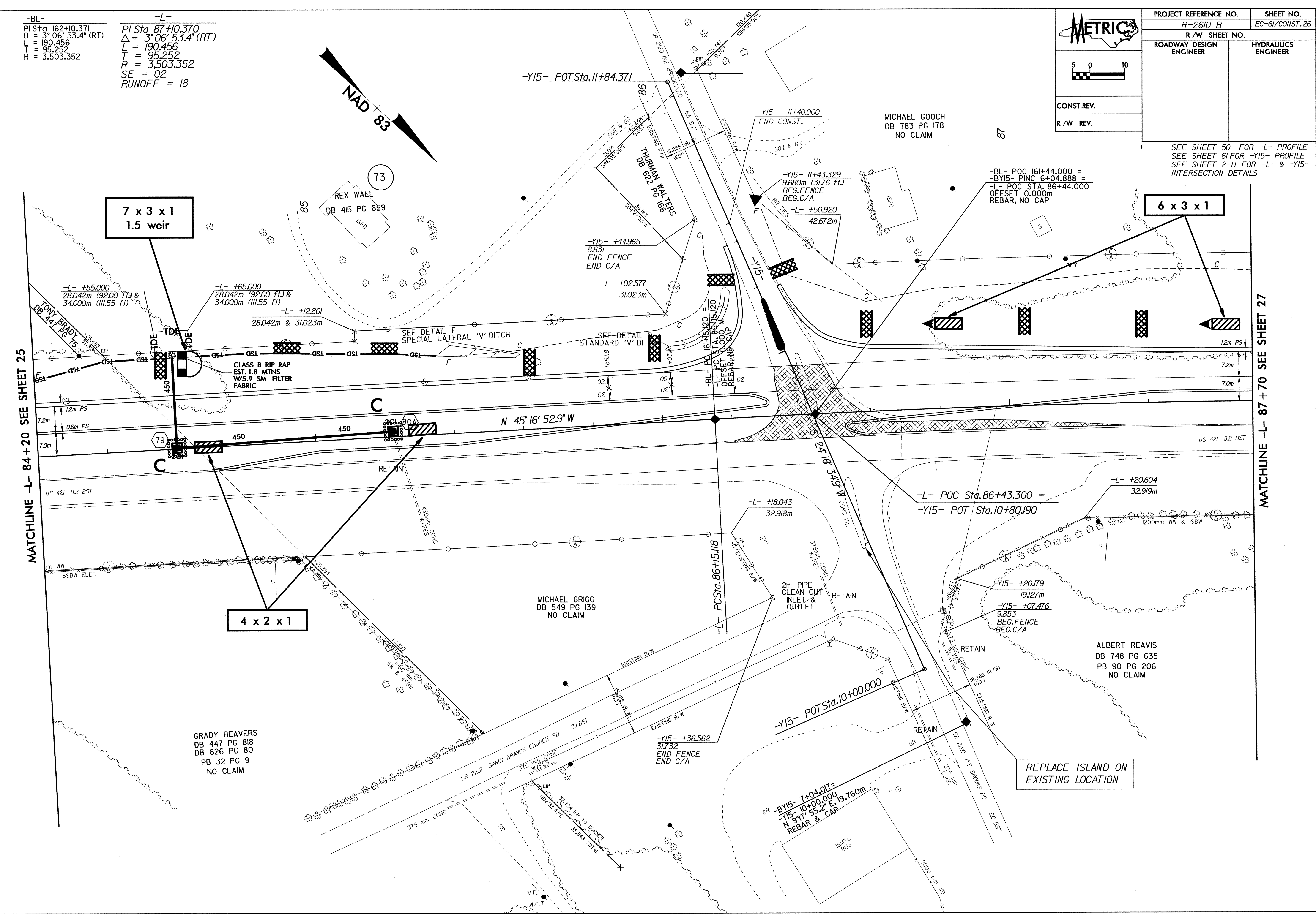
PROJECT REFERENCE NO. R-2610 B		SHEET NO. EC-61/CONST.26
R/W SHEET NO.		
ROADWAY DESIGN ENGINEER	HYDRAULICS ENGINEER	
CONST. REV.		
R/W REV.		



SEE SHEET 50 FOR -L- PROFILE
 SEE SHEET 61 FOR -Y15- PROFILE
 SEE SHEET 2-H FOR -L- & -Y15- INTERSECTION DETAILS

MATCHLINE -L- 84 + 20 SEE SHEET 25

MATCHLINE -L- 87 + 70 SEE SHEET 27



28 JAN 2004 08:28:08 c:\p02\2610b\p02\2610b26.dwg