
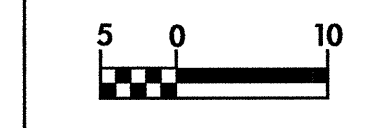


-BL-  
 PI Sta 162+10.371  
 D = 3° 06' 53.4" (RT)  
 L = 190.456  
 T = 95.252  
 R = 3,503.352

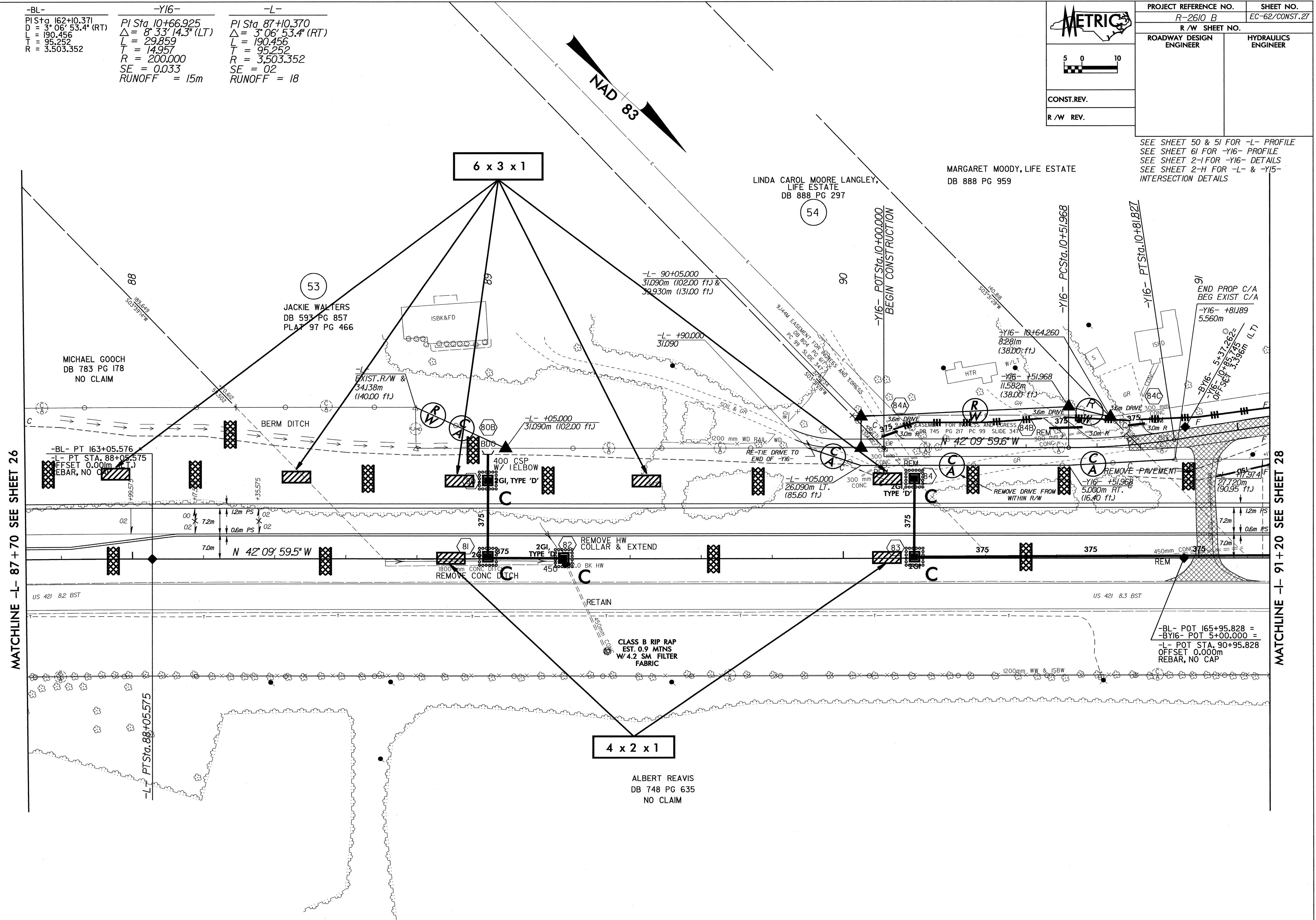
-Y16-  
 PI Sta 10+66.925  
 Δ = 8° 33' 14.3" (LT)  
 L = 29.859  
 T = 14.957  
 R = 200.000  
 SE = 0.033  
 RUNOFF = 15m

-L-  
 PI Sta 87+10.370  
 Δ = 3° 06' 53.4" (RT)  
 L = 190.456  
 T = 95.252  
 R = 3,503.352  
 SE = 0.02  
 RUNOFF = 18

|  |                     |
|--|---------------------|
|  |                     |
| PROJECT REFERENCE NO.  | SHEET NO.           |
| R-2610 B   | EC-62/CONST.27      |
| R/W SHEET NO.  |                     |
| ROADWAY DESIGN ENGINEER  | HYDRAULICS ENGINEER |
|  |                     |
| CONST. REV.  |                     |
| R/W REV.   |                     |



SEE SHEET 50 & 51 FOR -L- PROFILE  
 SEE SHEET 61 FOR -Y16- PROFILE  
 SEE SHEET 2-1 FOR -Y16- DETAILS  
 SEE SHEET 2-H FOR -L- & -Y16- INTERSECTION DETAILS



MATCHLINE -L- 87 + 70 SEE SHEET 26

MATCHLINE -L- 91 + 20 SEE SHEET 28

29-JAN-2004 08:53  
C:\v\m\l\m\l\2610b\pr\j\2610b\27.psh