


29-JAN-2004 14:20
 C:\Users\jw\Documents\2610b\proj\2610b\38.pht
 8/17/03

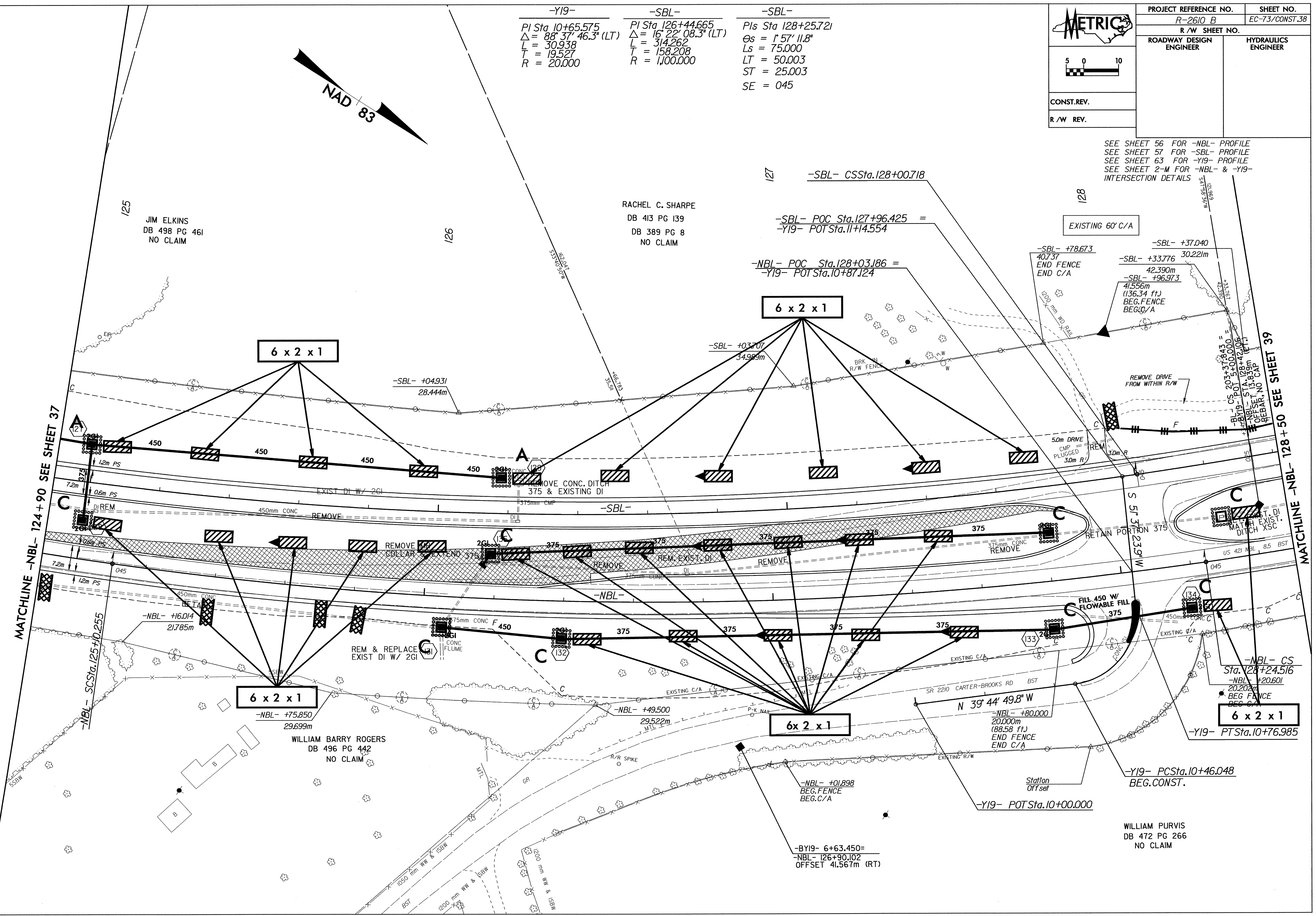
-Y19-
 PI Sta 10+65.575
 $\Delta = 88^\circ 37' 46.3" (LT)$
 $L = 30.938$
 $T = 19.527$
 $R = 20.000$

-SBL-
 PI Sta 126+44.665
 $\Delta = 16^\circ 22' 08.3" (LT)$
 $L = 314.262$
 $T = 158.208$
 $R = 1,100.000$

-SBL-
 PIs Sta 128+25.721
 $\Delta s = 1^\circ 57' 11.8"$
 $Ls = 75.000$
 $LT = 50.003$
 $ST = 25.003$
 $SE = 045$

 5 0 10 CONST.REV. R/W REV.	PROJECT REFERENCE NO. R-2610 B	SHEET NO. EC-73/CONST.38
	ROADWAY DESIGN ENGINEER	HYDRAULICS ENGINEER

SEE SHEET 56 FOR -NBL- PROFILE
 SEE SHEET 57 FOR -SBL- PROFILE
 SEE SHEET 63 FOR -Y19- PROFILE
 SEE SHEET 2-M FOR -NBL- & -Y19- INTERSECTION DETAILS



MATCHLINE -NBL- 124+90 SEE SHEET 37

MATCHLINE -NBL- 128+50 SEE SHEET 39

JIM ELKINS
 DB 498 PG 461
 NO CLAIM

RACHEL C. SHARPE
 DB 413 PG 139
 DB 389 PG 8
 NO CLAIM

WILLIAM BARRY ROGERS
 DB 496 PG 442
 NO CLAIM

WILLIAM PURVIS
 DB 472 PG 266
 NO CLAIM

6 x 2 x 1

6 x 2 x 1

6 x 2 x 1

6 x 2 x 1

6 x 2 x 1