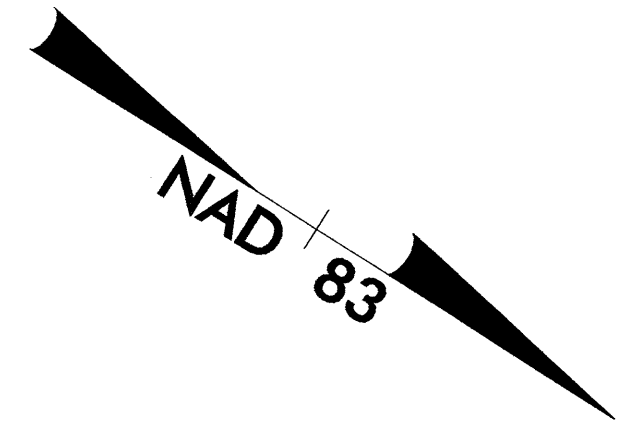


8/17/2004

29-JAN-2004 15:49
at:\red\purch\2610b\proj\2610b\31\psh

-BL-	-SBL-	-NBL-
Pls Sta 203+53.083	Pls Sta 128+25.721	Pls Sta 128+49.519
Fs = 1' 08" 07.2"	Os = 1' 57" 11.8"	Os = 1' 57" 11.8"
Ls = 45.120	Ls = 75.000	Ls = 75.000
LT = 30.481	LT = 50.003	LT = 50.003
ST = 15.241	ST = 25.003	ST = 25.003
	SE = 045	SE = 045



METRIC

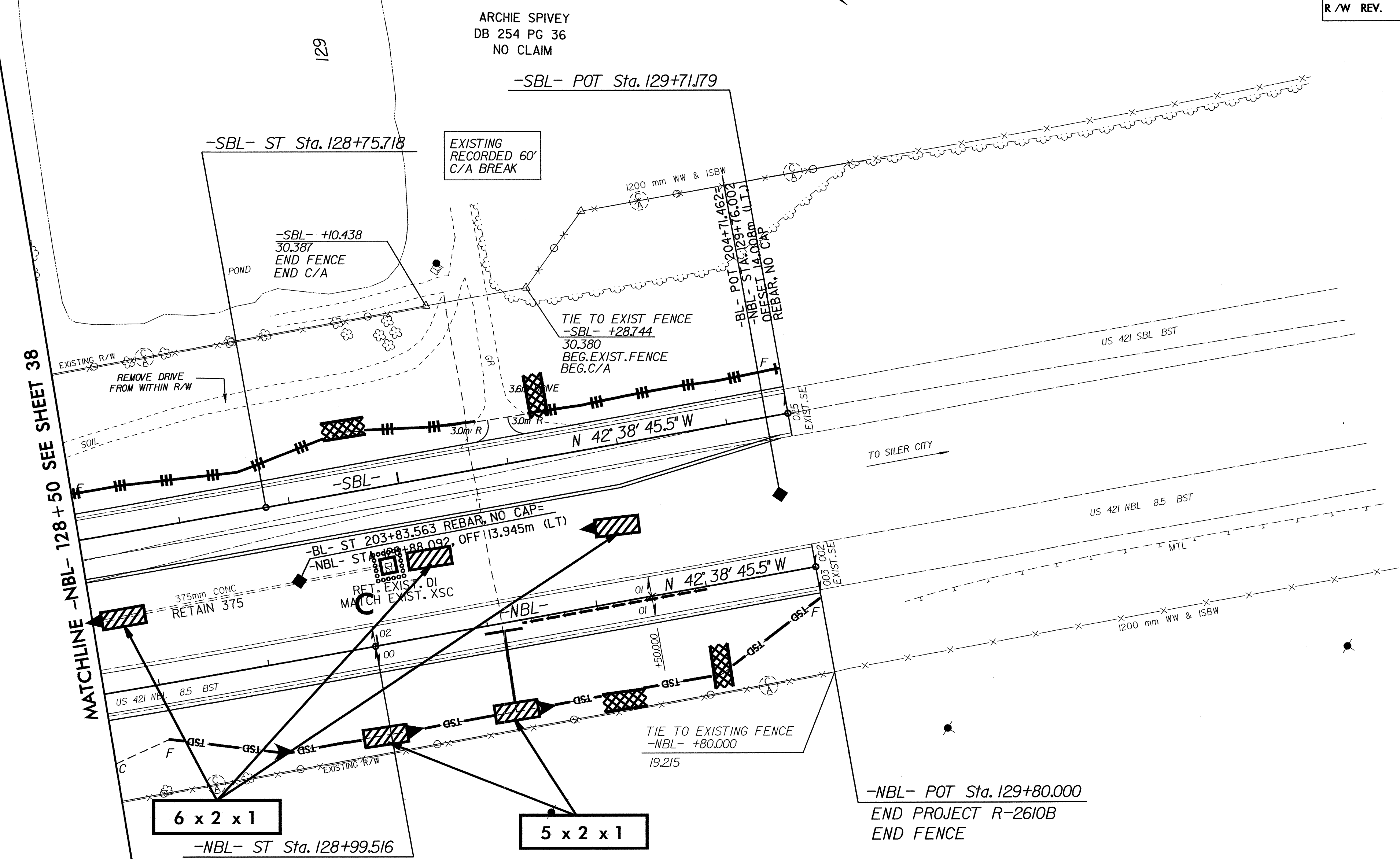
5 0 10

CONST. REV.

R/W REV.

PROJECT REFERENCE NO.	SHEET NO.
R-2610 B	EC-74/CONST.39
R/W SHEET NO.	
ROADWAY DESIGN ENGINEER	HYDRAULICS ENGINEER

SEE SHEET 56 FOR -NBL- PROFILE
 SEE SHEET 57 FOR -SBL- PROFILE
 SEE SHEET 2-M FOR -NBL- & -Y19- INTERSECTION DETAILS



MATCHLINE -NBL- 128+50 SEE SHEET 38

6 x 2 x 1
-NBL- ST Sta. 128+99.516

5 x 2 x 1

ARCHIE SPIVEY
DB 254 PG 36
NO CLAIM

WILLIAM PURVIS
DB 472 PG 266
NO CLAIM

TO SILVER CITY

-NBL- POT Sta. 129+80.000
END PROJECT R-2610B
END FENCE