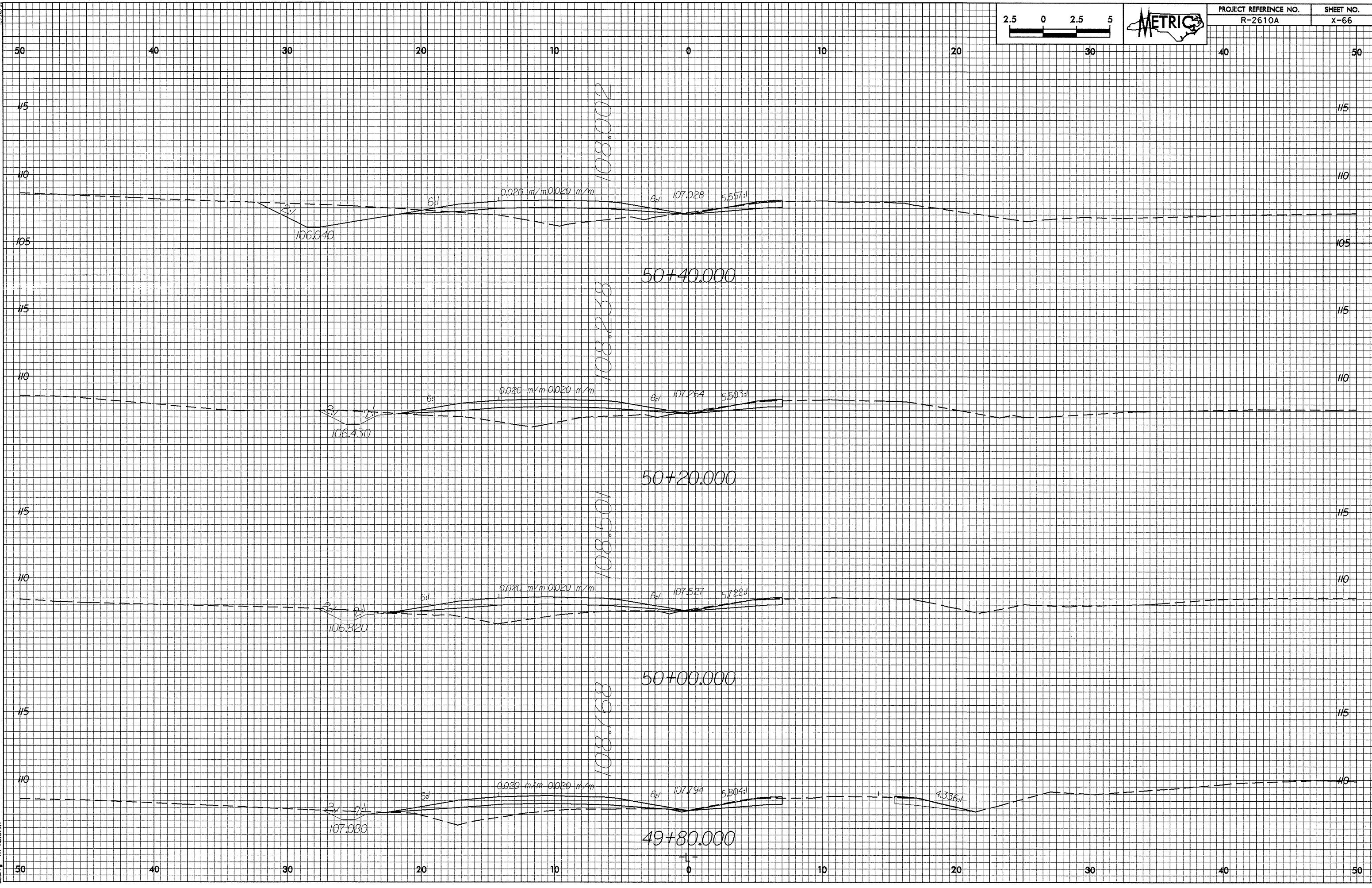
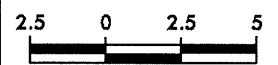


03-NOV-2003 13:23
sherry AT 10(8)119 1.mpl



50+40.000

50+20.000

50+00.000

49+80.000

106.040

106.430

106.820

107.080

108.002

108.238

108.501

108.768

0.020 m/m 0.020 m/m

0.020 m/m 0.020 m/m

0.020 m/m 0.020 m/m

0.020 m/m 0.020 m/m

107.928 5.557:1

107.264 5.503:1

107.527 5.722:1

107.794 5.804:1

4.336:1

6:1

6:1

6:1

6:1

6:1

6:1

6:1

6:1

3:1

3:1

3:1

3:1