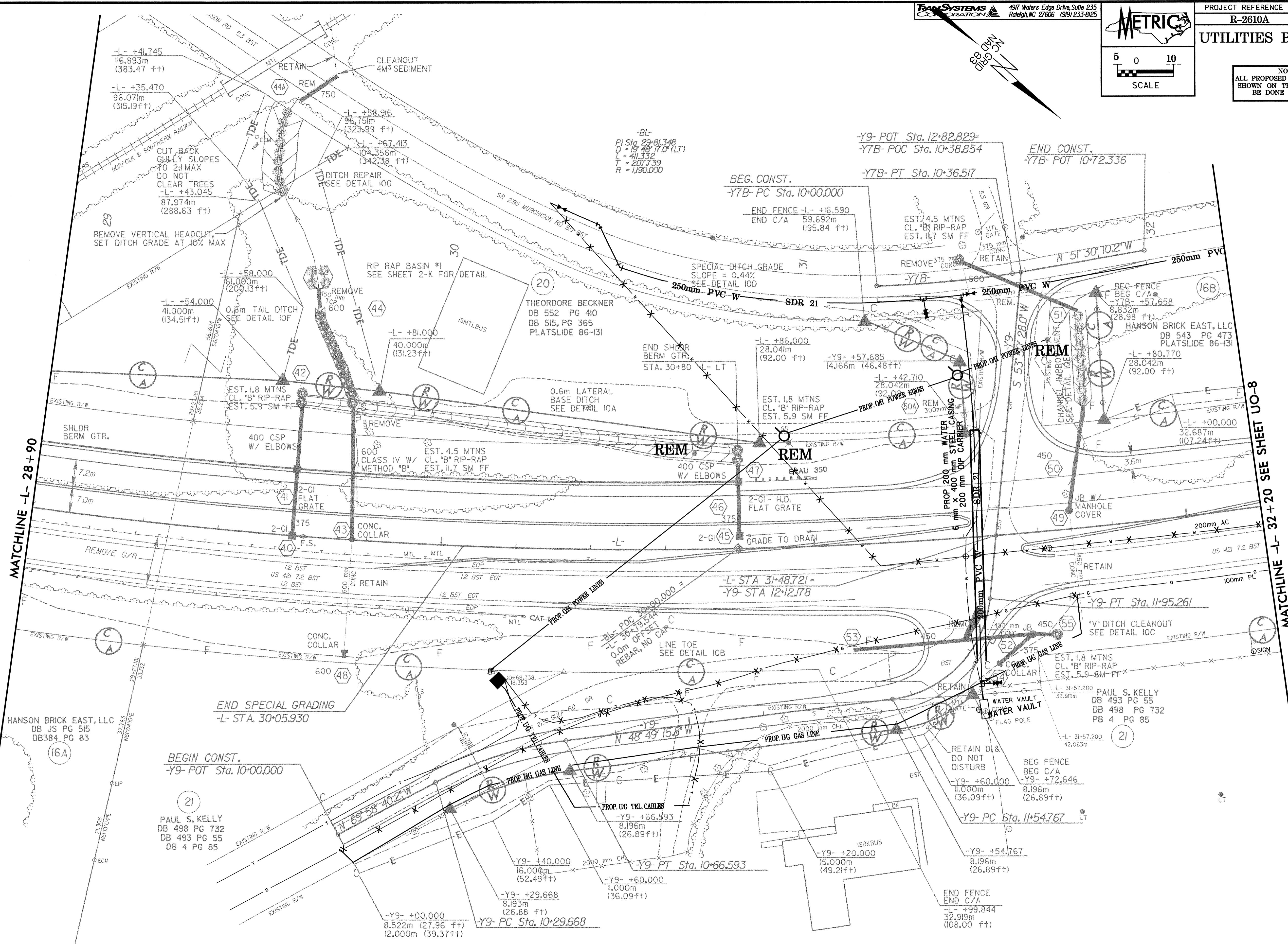


UTILITIES BY OTHERS

NOTE: ALL PROPOSED UTILITY WORK SHOWN ON THIS SHEET WILL BE DONE BY OTHERS



MATCHLINE -L- 28+90

MATCHLINE -L- 32+20 SEE SHEET UO-8

-L- +41.745
116.883m
(383.47 ft)

-L- +35.470
96.071m
(315.19 ft)

-L- +58.916
98.751m
(323.99 ft)

-L- +67.413
104.356m
(342.38 ft)

-BL-
PI Sta. 29+81.348
D = 19' 48" (5.95 m) (LT)
L = 411.332
T = 207.739
R = 1,190.000

-Y9- POT Sta. 12+82.829-
-Y7B- POC Sta. 10+38.854

END CONST.
-Y7B- POT 10+72.336

BEG. CONST.
-Y7B- PC Sta. 10+00.000

-Y7B- PT Sta. 10+36.517

END FENCE -L- +16.590
END C/A 59.692m
(195.84 ft)

EST. 4.5 MTNS
CL. 'B' RIP-RAP
EST. 11.7 SM FF

BEG FENCE
BEG C/A
-Y7B- +57.658
8.832m
(28.98 ft)

HANSON BRICK EAST, LLC
DB 543 PG 473
PLATSLIDE 86-131

CUT BACK
GULLY SLOPES
TO 2% MAX
DO NOT
CLEAR TREES
-L- +43.045
87.974m
(288.63 ft)

REMOVE VERTICAL HEADCUT,
SET DITCH GRADE AT 10% MAX

-L- +58.000
61.080m
(200.13 ft)

0.8m TAIL DITCH
SEE DETAIL 10F

RIP RAP BASIN #1
SEE SHEET 2-K FOR DETAIL

THEODORE BECKNER
DB 552 PG 410
DB 515, PG 365
PLATSLIDE 86-131

SPECIAL DITCH GRADE
SLOPE = 0.44%
SEE DETAIL 10D

REMOVE 375 mm
CONC. RETAIN

-L- +54.000
41.000m
(134.51 ft)

-L- +81.000
40.000m
(131.23 ft)

-L- +86.000
28.041m
(92.00 ft)

-Y9- +57.685
14.166m
(46.48 ft)

-L- +42.710
28.042m
(92.00 ft)

-L- +80.770
28.042m
(92.00 ft)

EST. 1.8 MTNS
CL. 'B' RIP-RAP
EST. 5.9 SM FF

EST. 4.5 MTNS
CL. 'B' RIP-RAP
EST. 11.7 SM FF

EST. 1.8 MTNS
CL. 'B' RIP-RAP
EST. 5.9 SM FF

EST. 1.8 MTNS
CL. 'B' RIP-RAP
EST. 5.9 SM FF

-L- +00.000
32.687m
(107.24 ft)

SHLDR
BERM GTR.

400 CSP
W/ ELBOWS

600
CLASS IV W/
METHOD 'B'

400 CSP
W/ ELBOWS

2-GI - H.D.
FLAT GRATE

PROP. 200 mm WATER
STEEL CASING
6 mm X 400 mm DIP
CARRIER

JB W/
MANHOLE
COVER

REMOVE G/R

12 BST
US 421 T2 BST
12 BST

12 BST
EOT

2-GI (45)
GRADE TO DRAIN

RETAIN

US 421 T2 BST

HANSON BRICK EAST, LLC
DB JS PG 515
DB 384 PG 83

END SPECIAL GRADING
-L- STA. 30+05.930

-BL- POC 30+00.000 =
-L- 30+19.544
0.0m OFFSET
REBAR, NO CAP

-L- STA 31+48.721 =
-Y9- STA 12+42.178

-Y9- PT Sta. 11+95.261

V DITCH CLEANOUT
SEE DETAIL 10C

EST. 1.8 MTNS
CL. 'B' RIP-RAP
EST. 5.9 SM FF

-L- 31+57.200
32.919m

-L- 31+57.200
42.063m

BEG FENCE
BEG C/A
-Y9- +60.000
11.000m
(36.09 ft)

8.196m
(26.89 ft)

-Y9- PC Sta. 11+54.767

BEGIN CONST.
-Y9- POT Sta. 10+00.000

PAUL S. KELLY
DB 498 PG 732
DB 493 PG 55
DB 4 PG 85

PROP. UG TEL CABLES
-Y9- +66.993
8.196m
(26.89 ft)

-Y9- +40.000
16.000m
(52.49 ft)

-Y9- +29.668
8.193m
(26.88 ft)

-Y9- +00.000
8.522m (27.96 ft)
12.000m (39.37 ft)

-Y9- PC Sta. 10+29.668

-Y9- PT Sta. 10+66.593

-Y9- +20.000
15.000m
(49.21 ft)

-Y9- +54.767
8.196m
(26.89 ft)

END FENCE
END C/A
-L- +99.844
32.919m
(108.00 ft)