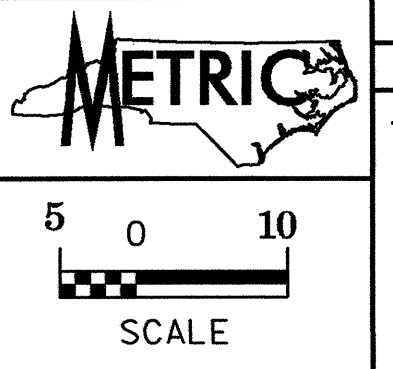


TRANSYSTEMS CORPORATION 4917 Waters Edge Drive, Suite 235 Raleigh, NC 27606 (919) 233-8125

Pls Sta 74+61.092  $\Delta = 45^\circ 39' 18.4''$  (LT)  
 L = 919.266  
 T = 485.603  
 R = 1,153.651  
 SE = 0.043

Pls Sta 79+25.239  $\Theta_s = 2^\circ 16' 14.4''$   
 Ls = 91.440  
 LT = 60.965  
 ST = 30.485

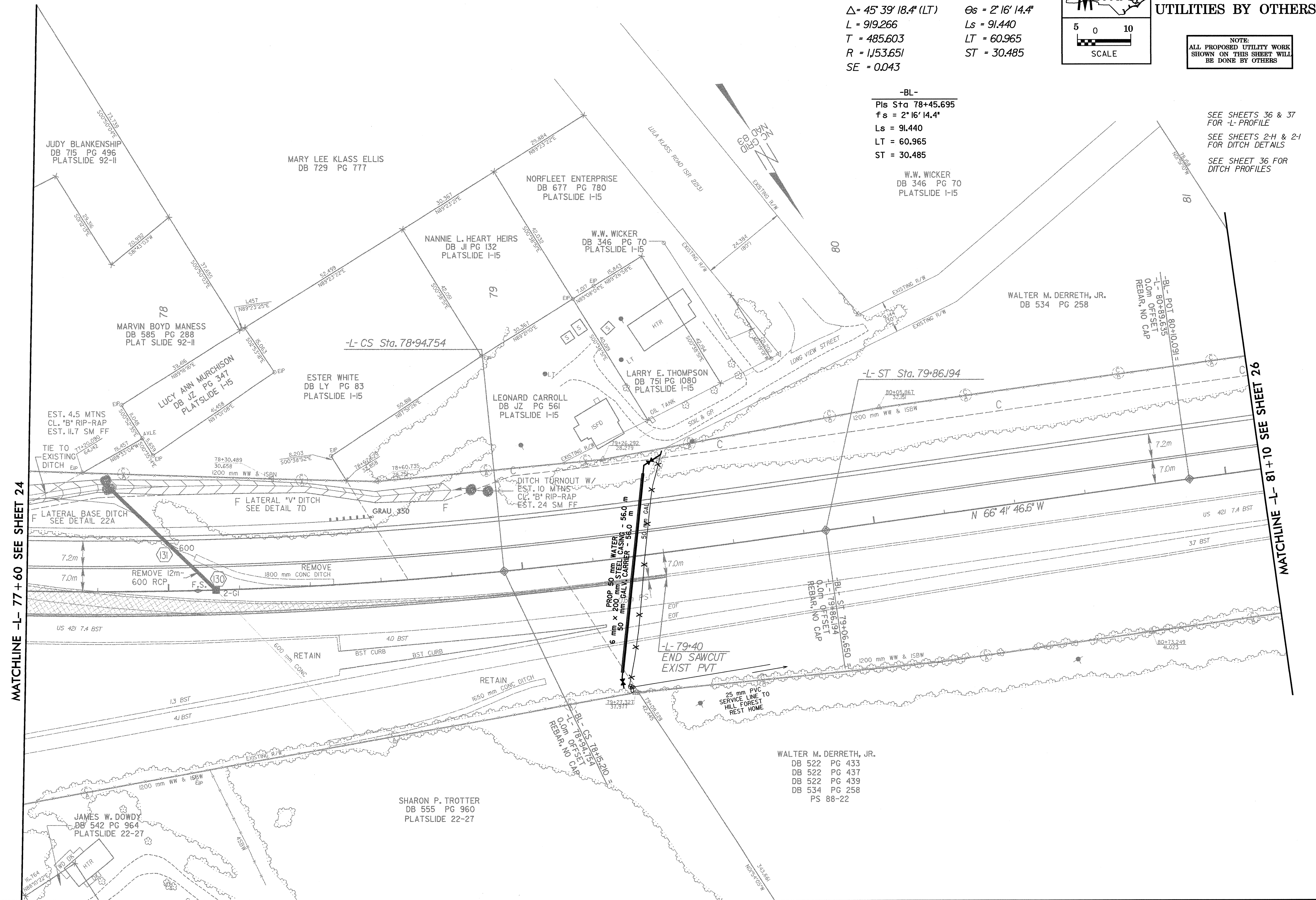


UTILITIES BY OTHERS

NOTE:  
 ALL PROPOSED UTILITY WORK SHOWN ON THIS SHEET WILL BE DONE BY OTHERS

-BL-  
 Pls Sta 78+45.695  
 fs = 2° 16' 14.4"  
 Ls = 91.440  
 LT = 60.965  
 ST = 30.485

SEE SHEETS 36 & 37 FOR -L- PROFILE  
 SEE SHEETS 2-H & 2-I FOR DITCH DETAILS  
 SEE SHEET 36 FOR DITCH PROFILES



MATCHLINE -L- 77+60 SEE SHEET 24

MATCHLINE -L- 81+10 SEE SHEET 26

WALTER M. DERRETH, JR.  
 DB 522 PG 433  
 DB 522 PG 437  
 DB 522 PG 439  
 DB 534 PG 258  
 PS 88-22

SHARON P. TROTTER  
 DB 555 PG 960  
 PLATSLIDE 22-27