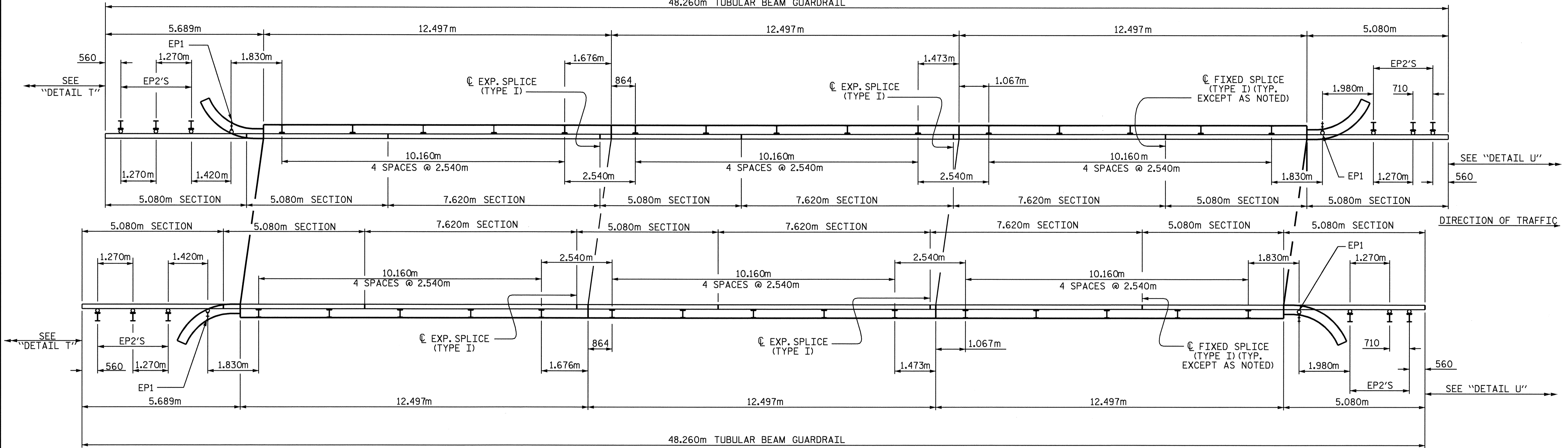
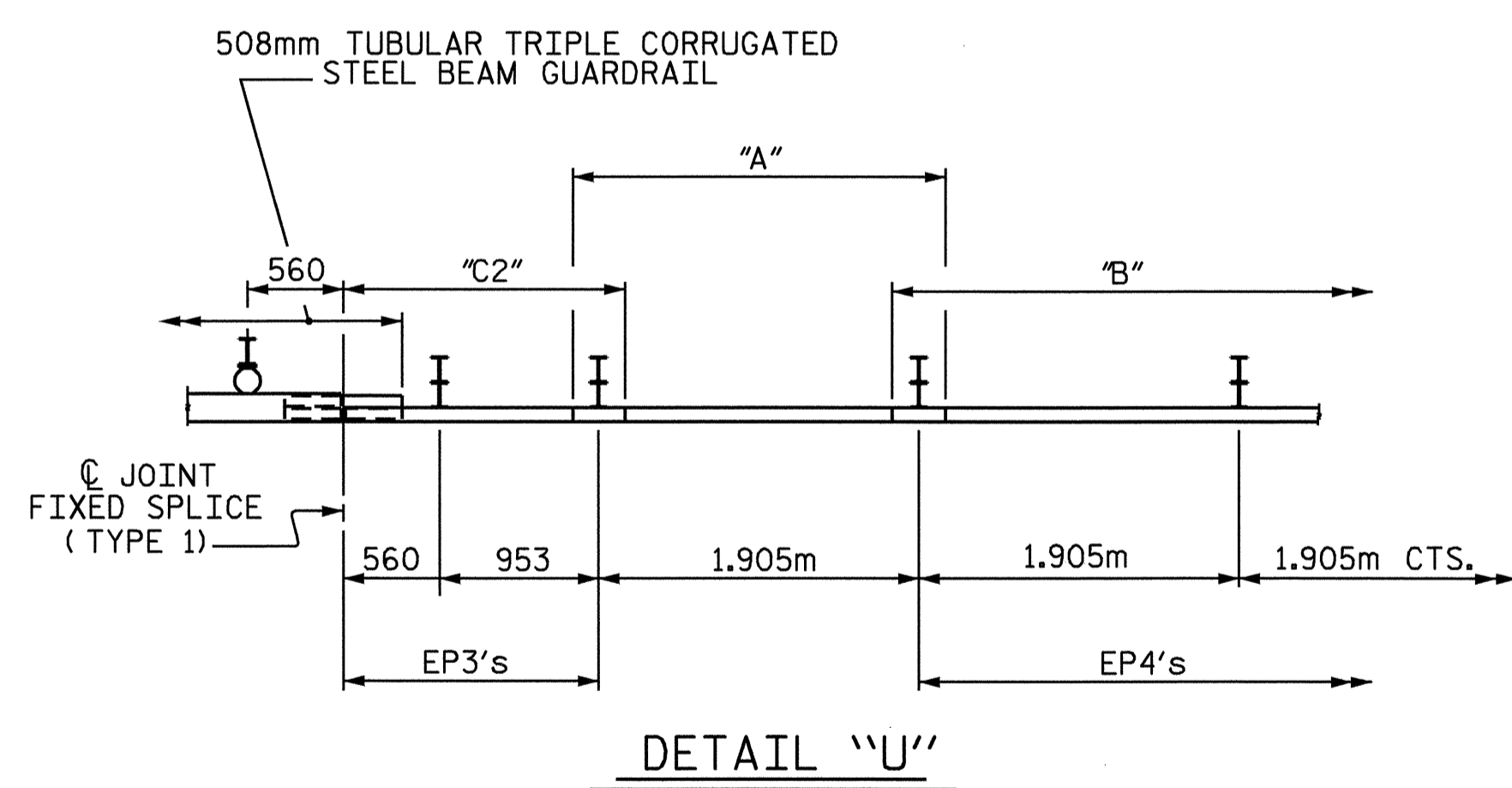


STATE	PROJECT NO.	SHEET NO.	TOTAL SHEETS
N.C.	R-2610A	2-DD	
F.A. PROJECT NO. :			

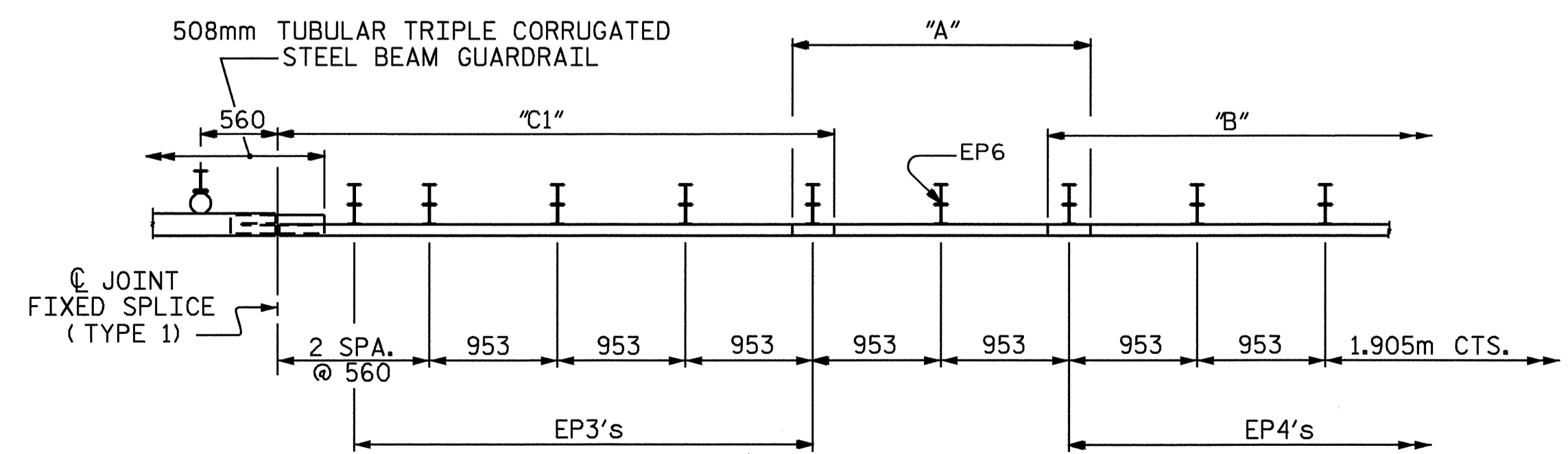
48.260m TUBULAR BEAM GUARDRAIL



GUARDRAIL LAYOUT
NORTHBOUND LANE



DETAIL "U"



DETAIL "T"

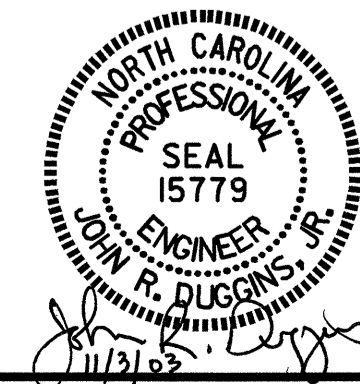
LEGEND

- USE BP1
- USE EP1
- USE EP2
- USE EP3 (EXCEPT AS NOTED)
- "A" ----- USE W-TR GUARDRAIL TRANSITIONAL SECTION
- "B" ----- USE STANDARD GUARDRAIL
- "C1" ----- USE 508mm TRIPLE CORRUGATED STEEL BEAM GUARDRAIL
- "C2" ----- USE 508mm TRIPLE CORRUGATED STEEL BEAM GUARDRAIL

PROJECT NO. R-2610A
CHATHAM COUNTY

STATION: _____
SHEET 1 OF 6 BRIDGE NO. 35

STATE OF NORTH CAROLINA
DEPARTMENT OF TRANSPORTATION
RALEIGH
DETAILS FOR RETROFIT OF
EXISTING BRIDGE WITH
TUBULAR BEAM GUARDRAIL
US 421 (NBL) OVER -Y2-
(ATLANTIC COASTAL WESTERN RAILROAD)



DRAWN BY: M. E. POOLE DATE: 10/03
CHECKED BY: J.R. DUGGINS DATE: 10/03

REVISIONS						SHEET NO.	
NO.	BY:	DATE:	NO.	BY:	DATE:	TOTAL SHEETS	
1			3				
2			4				