

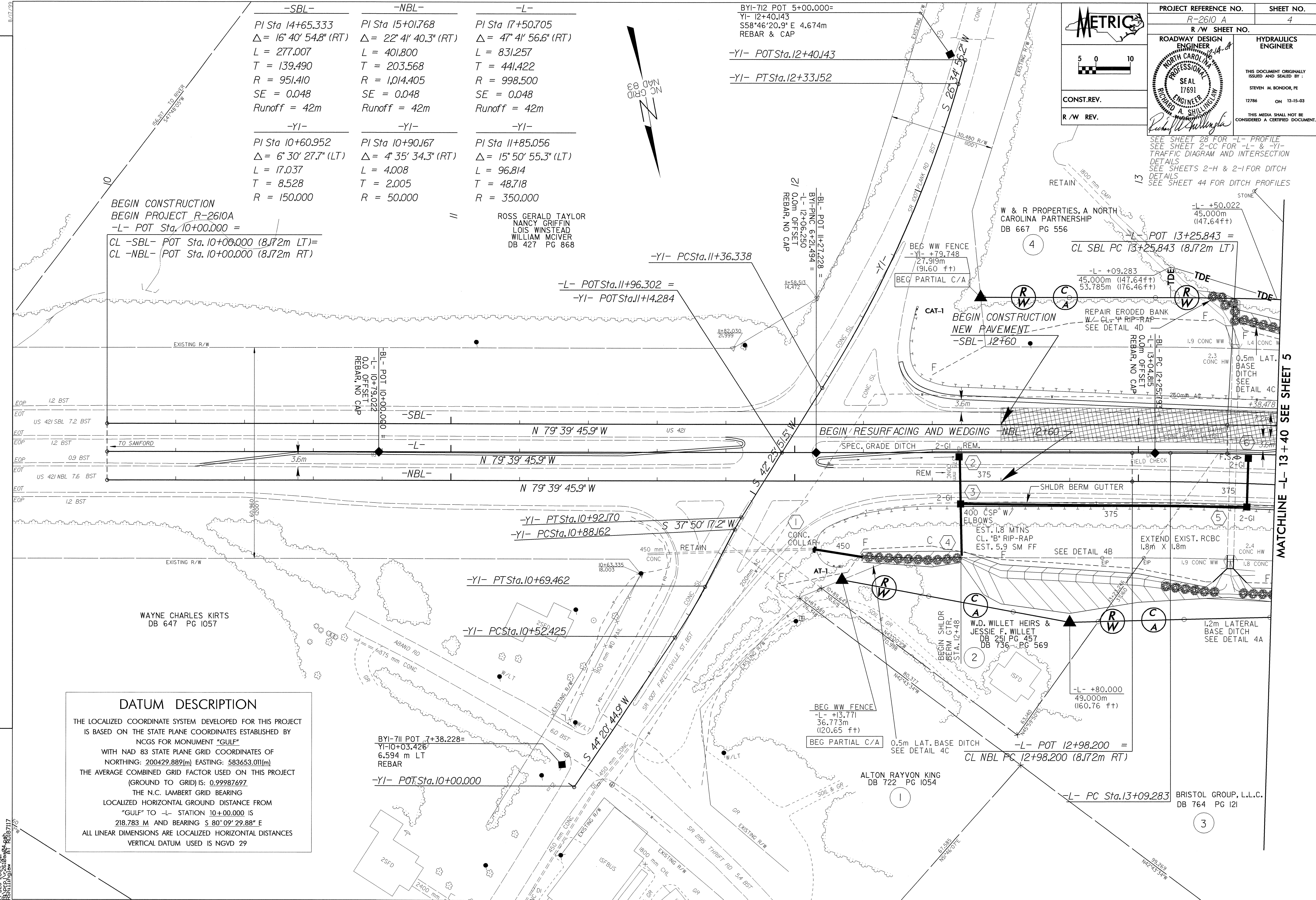
	PROJECT REFERENCE NO.	R-2610 A	SHEET NO.	4
	R/W SHEET NO.			
	ROADWAY DESIGN ENGINEER			
	HYDRAULICS ENGINEER			
CONST. REV.	THIS DOCUMENT ORIGINALLY ISSUED AND SEALED BY: STEVEN M. BONDOR, PE 12786 ON 12-15-03 THIS MEDIA SHALL NOT BE CONSIDERED A CERTIFIED DOCUMENT.			
R/W REV.	SEE SHEET 28 FOR -L- PROFILE SEE SHEET 2-CC FOR -L- & -YI- TRAFFIC DIAGRAM AND INTERSECTION DETAILS SEE SHEETS 2-H & 2-I FOR DITCH DETAILS SEE SHEET 44 FOR DITCH PROFILES			

-SBL-	-NBL-	-L-
PI Sta 14+65.333	PI Sta 15+01.768	PI Sta 17+50.705
$\Delta = 16^\circ 40' 54.8" (RT)$	$\Delta = 22^\circ 41' 40.3" (RT)$	$\Delta = 47^\circ 41' 56.6" (RT)$
L = 277.007	L = 401.800	L = 831.257
T = 139.490	T = 203.568	T = 441.422
R = 951.410	R = 1,014.405	R = 998.500
SE = 0.048	SE = 0.048	SE = 0.048
Runoff = 42m	Runoff = 42m	Runoff = 42m

-YI-	-YI-	-YI-
PI Sta 10+60.952	PI Sta 10+90.167	PI Sta 11+85.056
$\Delta = 6^\circ 30' 27.7" (LT)$	$\Delta = 4^\circ 35' 34.3" (RT)$	$\Delta = 15^\circ 50' 55.3" (LT)$
L = 17.037	L = 4.008	L = 96.814
T = 8.528	T = 2.005	T = 48.718
R = 150.000	R = 50.000	R = 350.000

ROSS GERALD TAYLOR
 NANCY GRIFFIN
 LOIS WINSTEAD
 WILLIAM MCIVER
 DB 427 PG 868

BEGIN CONSTRUCTION
 BEGIN PROJECT R-2610A
 -L- POT Sta. 10+00.000 =
 CL -SBL- POT Sta. 10+00.000 (8.172m LT)=
 CL -NBL- POT Sta. 10+00.000 (8.172m RT)



DATUM DESCRIPTION

THE LOCALIZED COORDINATE SYSTEM DEVELOPED FOR THIS PROJECT IS BASED ON THE STATE PLANE COORDINATES ESTABLISHED BY NCGS FOR MONUMENT "GULF" WITH NAD 83 STATE PLANE GRID COORDINATES OF NORTHING: 200429.889(m) EASTING: 583653.011(m) THE AVERAGE COMBINED GRID FACTOR USED ON THIS PROJECT (GROUND TO GRID) IS: 0.99987697 THE N.C. LAMBERT GRID BEARING LOCALIZED HORIZONTAL GROUND DISTANCE FROM "GULF" TO -L- STATION 10+00.000 IS 218.783 M AND BEARING S 80° 09' 29.88" E ALL LINEAR DIMENSIONS ARE LOCALIZED HORIZONTAL DISTANCES VERTICAL DATUM USED IS NGVD 29

12-14-04 -CONST. REV. - CORRECTED THE DATUM DESCRIPTION FOR BEARING AND DISTANCE TO -L- STATION 10+00.000.

MATCHLINE -L- 13 + 40 SEE SHEET 5