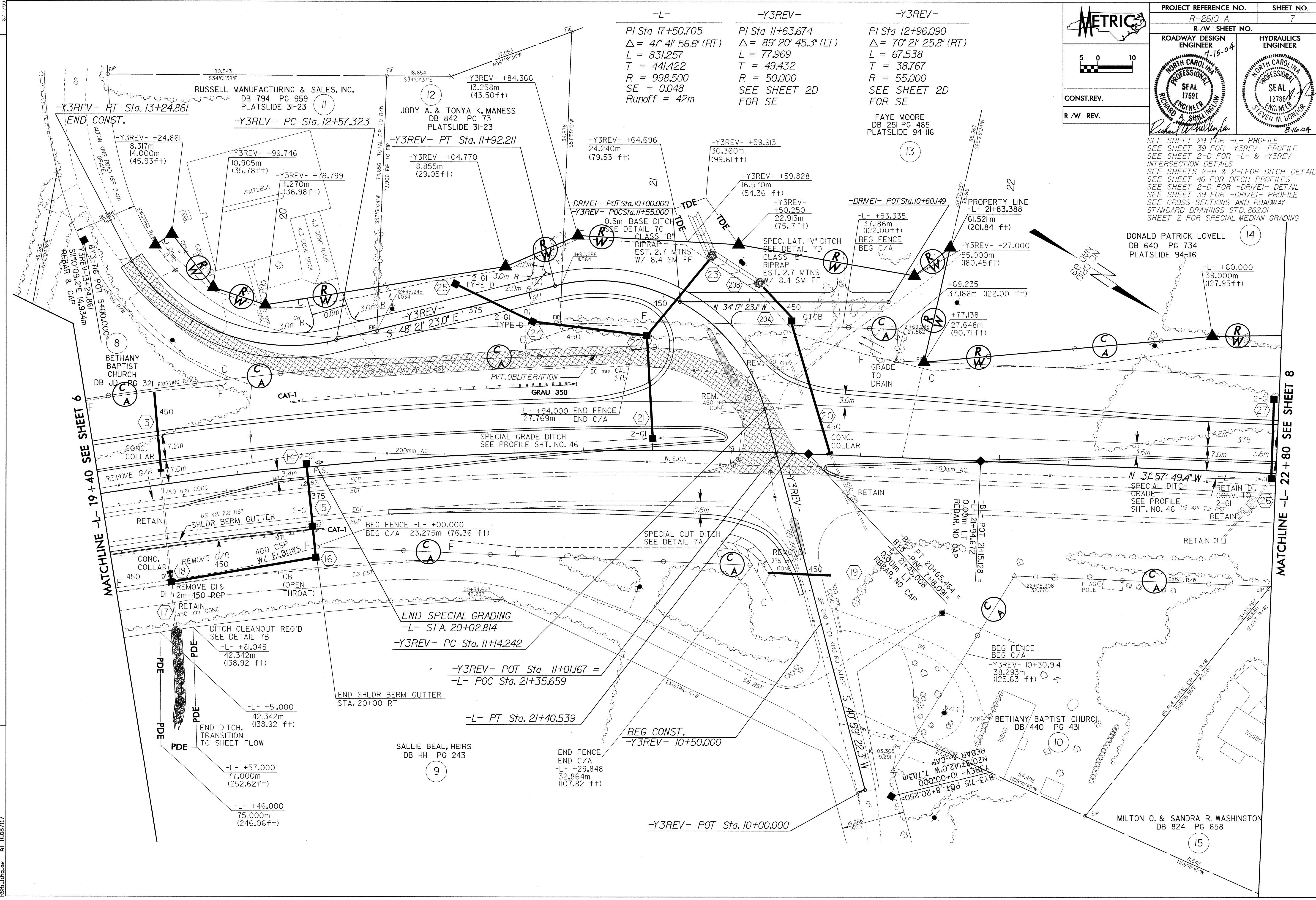


	PROJECT REFERENCE NO.	R-2610 A	SHEET NO.	7
	R/W SHEET NO.			
	ROADWAY DESIGN ENGINEER			
	HYDRAULICS ENGINEER			
CONST. REV.				
R/W REV.				

SEE SHEET 29 FOR -L- PROFILE
 SEE SHEET 39 FOR -Y3REV- PROFILE
 SEE SHEET 2-D FOR -L- & -Y3REV- INTERSECTION DETAILS
 SEE SHEETS 2-H & 2-I FOR DITCH DETAILS
 SEE SHEET 46 FOR DITCH PROFILES
 SEE SHEET 2-D FOR -DRIEVI- DETAIL
 SEE SHEET 39 FOR -DRIEVI- PROFILE
 SEE CROSS-SECTIONS AND ROADWAY STANDARD DRAWINGS STD. 862.01 SHEET 2 FOR SPECIAL MEDIAN GRADING

-L-	-Y3REV-	-Y3REV-
PI Sta 17+50.705	PI Sta 11+63.674	PI Sta 12+96.090
$\Delta = 47^\circ 41' 56.6" (RT)$	$\Delta = 89^\circ 20' 45.3" (LT)$	$\Delta = 70^\circ 21' 25.8" (RT)$
L = 831.257	L = 77.969	L = 67.538
T = 441.422	T = 49.432	T = 38.767
R = 998.500	R = 50.000	R = 55.000
SE = 0.048	SEE SHEET 2D FOR SE	SEE SHEET 2D FOR SE
Runoff = 42m		



MATCHLINE -L- 19 + 40 SEE SHEET 6

MATCHLINE -L- 22 + 80 SEE SHEET 8

REVISIONS

15 JUL 2006 08:52
 RSM/MSW
 R0107117