

8/17/15
 REVISIONS
 10-DEC-2003 14:30
 R/S/SHILLINGWATER AT RD 9475

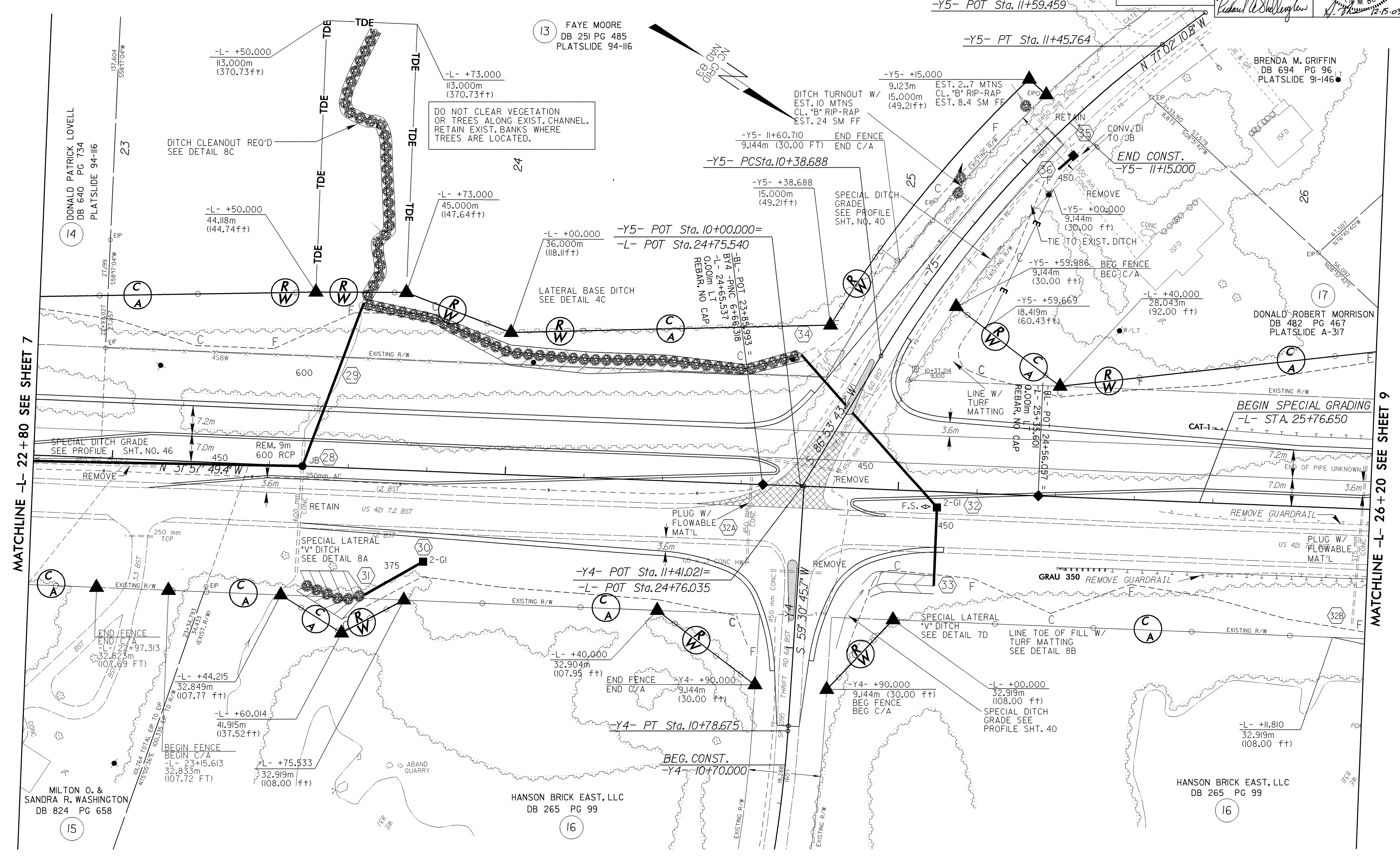
-Y4-
 PI Sta 10+41.424
 $\Delta = 13^{\circ} 04' 16.5''$ (LT)
 L = 74.829
 T = 37.577
 R = 328.000
 SEE SHEET 2E
 FOR SE

-Y5-
 PI Sta 10+92.898
 $\Delta = 22^{\circ} 04' 06.0''$ (RT)
 L = 107.076
 T = 54.210
 R = 278.000
 SEE SHEET 2E
 FOR SE

SEE SHEET 29 FOR -L- PROFILE
 SEE SHEET 40 FOR -Y4- & -Y5- PROFILE
 SEE SHEET 2-E FOR -L-, -Y4-, -Y5-
 INTERSECTION DETAILS
 SEE SHEETS 2-H & 2-I FOR DITCH
 DETAILS
 SEE SHEETS 46 & 47 FOR DITCH PROFILES
 SEE SHEET 2-D FOR -L- & -Y3REV-
 INTERSECTION DETAILS

PROJECT REFERENCE NO. R-2610 A		SHEET NO. 8
R/W SHEET NO.		
ROADWAY DESIGN ENGINEER 12-11-03 NORTH CAROLINA PROFESSIONAL ENGINEER SEAL 17691 MICHAEL A. SHILLINGWATER	HYDRAULICS ENGINEER NORTH CAROLINA PROFESSIONAL ENGINEER SEAL 12786 STEVEN M. BONDOR	
CONST. REV.	R/W REV.	

Richard A. Shillingwater
 12.15.03



MATCHLINE -L- 22 + 80 SEE SHEET 7

MATCHLINE -L- 26 + 20 SEE SHEET 9

DO NOT CLEAR VEGETATION OR TREES ALONG EXIST. CHANNEL. RETAIN EXIST. BANKS WHERE TREES ARE LOCATED.

LATERAL BASE DITCH SEE DETAIL 4C

DITCH TURNOUT W/ EST. 10 MTNS CL. 'B' RIP-RAP EST. 24 SM FF

SPECIAL DITCH GRADE SEE PROFILE SHT. NO. 40

END CONST. -Y5- 11+15.000

BEGIN SPECIAL GRADING -L- STA. 25+76.650

MILTON O. & SANDRA R. WASHINGTON
 DB 824 PG 658

HANSON BRICK EAST, LLC
 DB 265 PG 99

HANSON BRICK EAST, LLC
 DB 265 PG 99