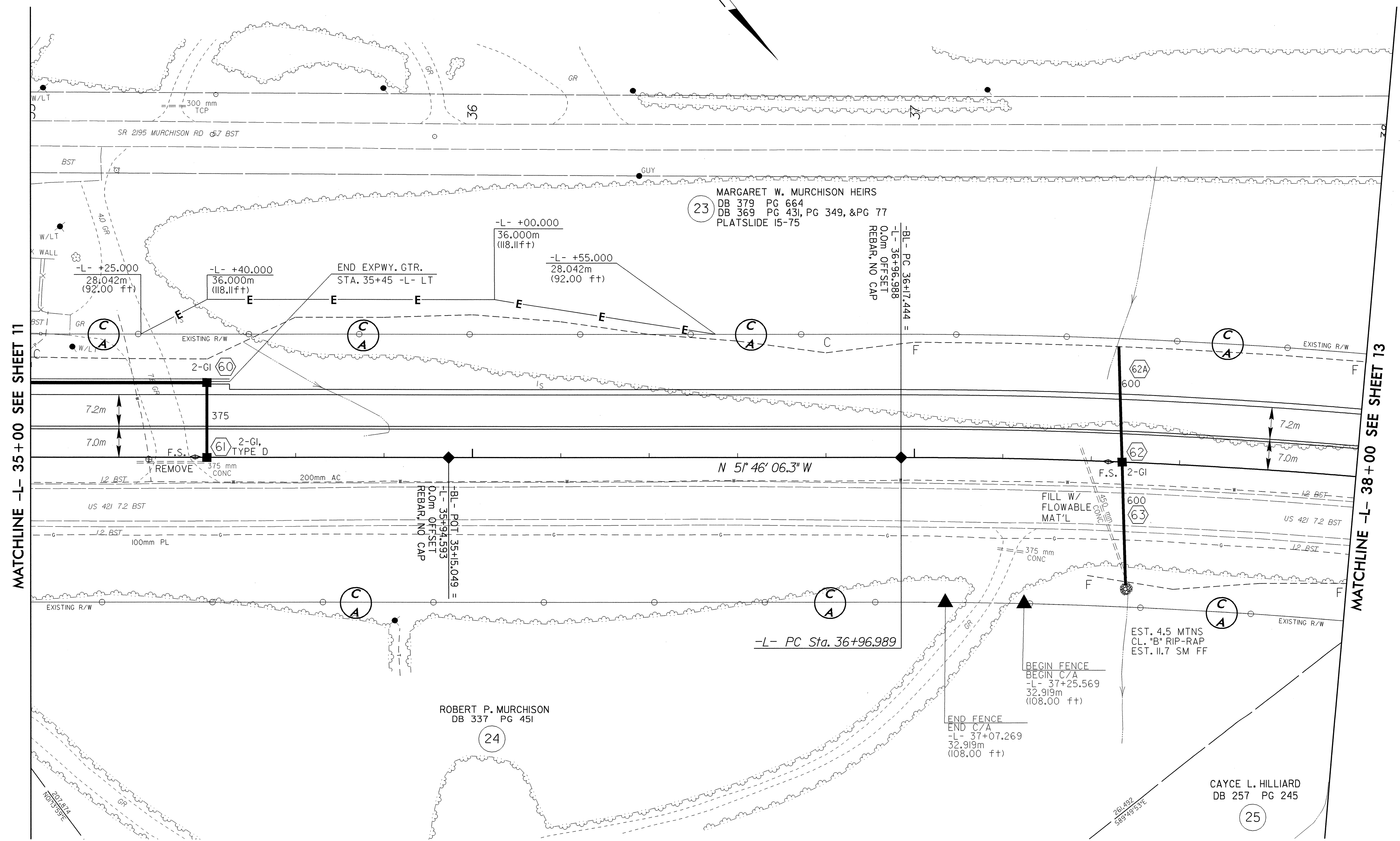
	PROJECT REFERENCE NO. R-2610 A	SHEET NO. 12
	R/W SHEET NO.	
	ROADWAY DESIGN ENGINEER RICHARD A. SHILLING SEAL 17691 3-23-04	HYDRAULICS ENGINEER STEVEN M. BONDUR SEAL 12786 3-29-04
CONST. REV.		
R/W REV.		

SEE SHEET 31 FOR -L- PROFILE

-L-
 PI Sta 40+75.263
 $\Delta = 35^\circ 16' 06.9''$ (RT)
 L = 732.508
 T = 378.274
 R = 1,190.000
 SE = 0.041
 Runoff = 36m



REVISIONS

22-MAR-2004 11:03
 R:\projects\2610A\plan\plan12.dwg
 Richard A. Shilling
 H:\RIBB52