
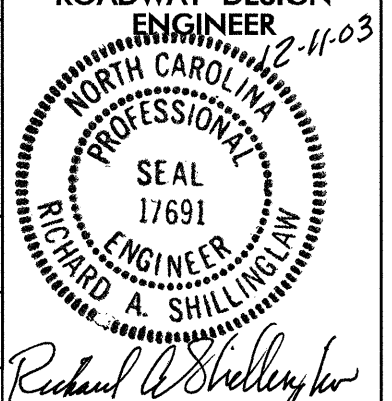
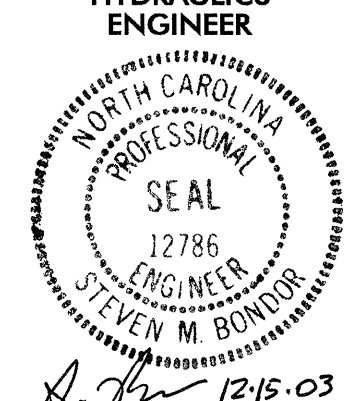
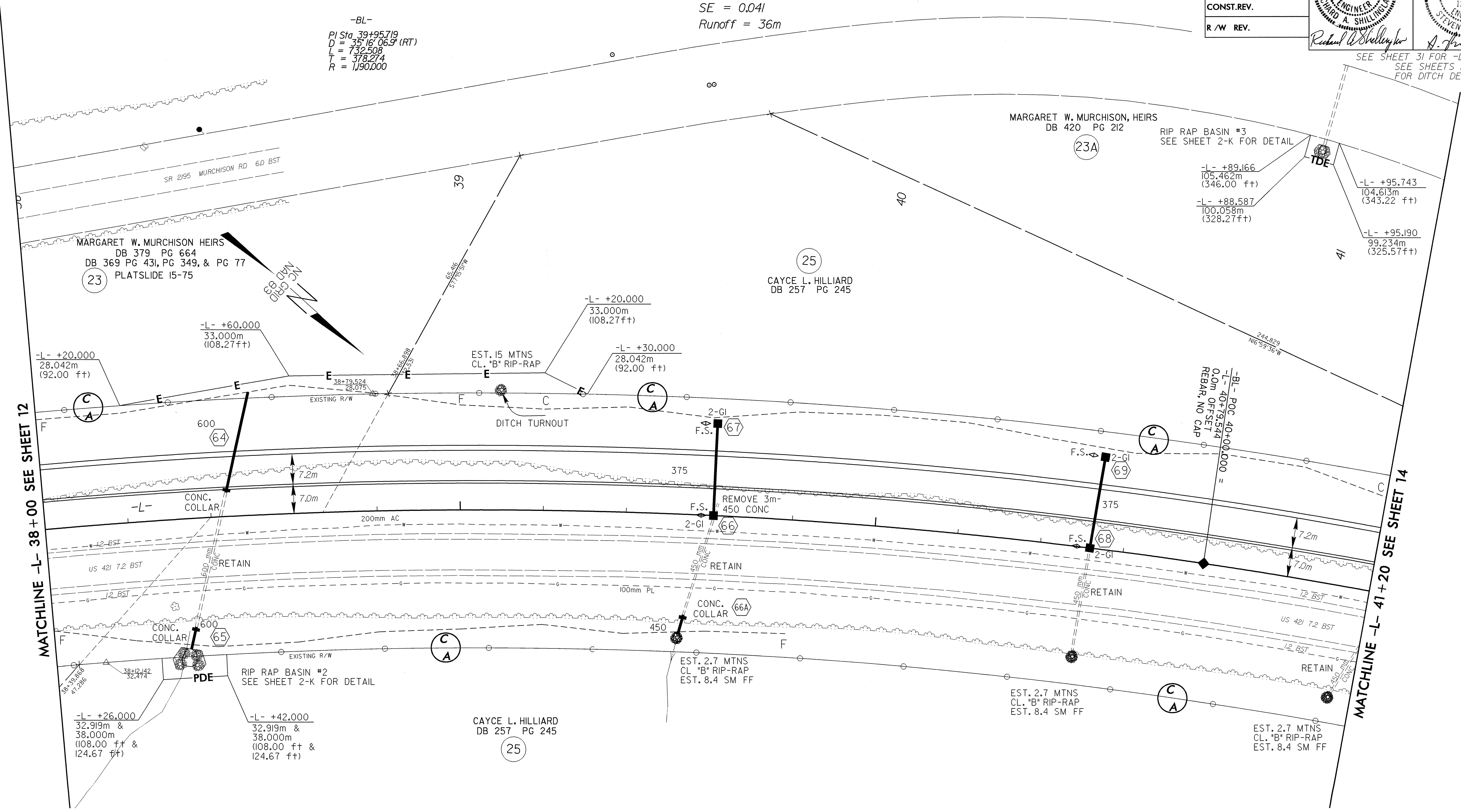


8/17/99

 5 0 10	PROJECT REFERENCE NO.	SHEET NO.
	R-2610 A	13
CONST. REV.	ROADWAY DESIGN ENGINEER	HYDRAULICS ENGINEER
R/W REV.	 RICHARD A. SHILLINGHAM ENGINEER 17691	 STEVEN M. BONDOR ENGINEER 12786

-L-
 PI Sta 40+75.263
 $\Delta = 35^{\circ} 16' 06.9''$ (RT)
 L = 732.508
 T = 378.274
 R = 1,190.000
 SE = 0.041
 Runoff = 36m

-BL-
 PI Sta 39+95.719
 $D = 35^{\circ} 16' 06.9''$ (RT)
 L = 732.508
 T = 378.274
 R = 1,190.000



SEE SHEET 31 FOR -L- PROFILE
 SEE SHEETS 2-H & 2-I
 FOR DITCH DETAILS

REVISIONS

04-NOV-2003 11:24
 R:\pco\124\10012177