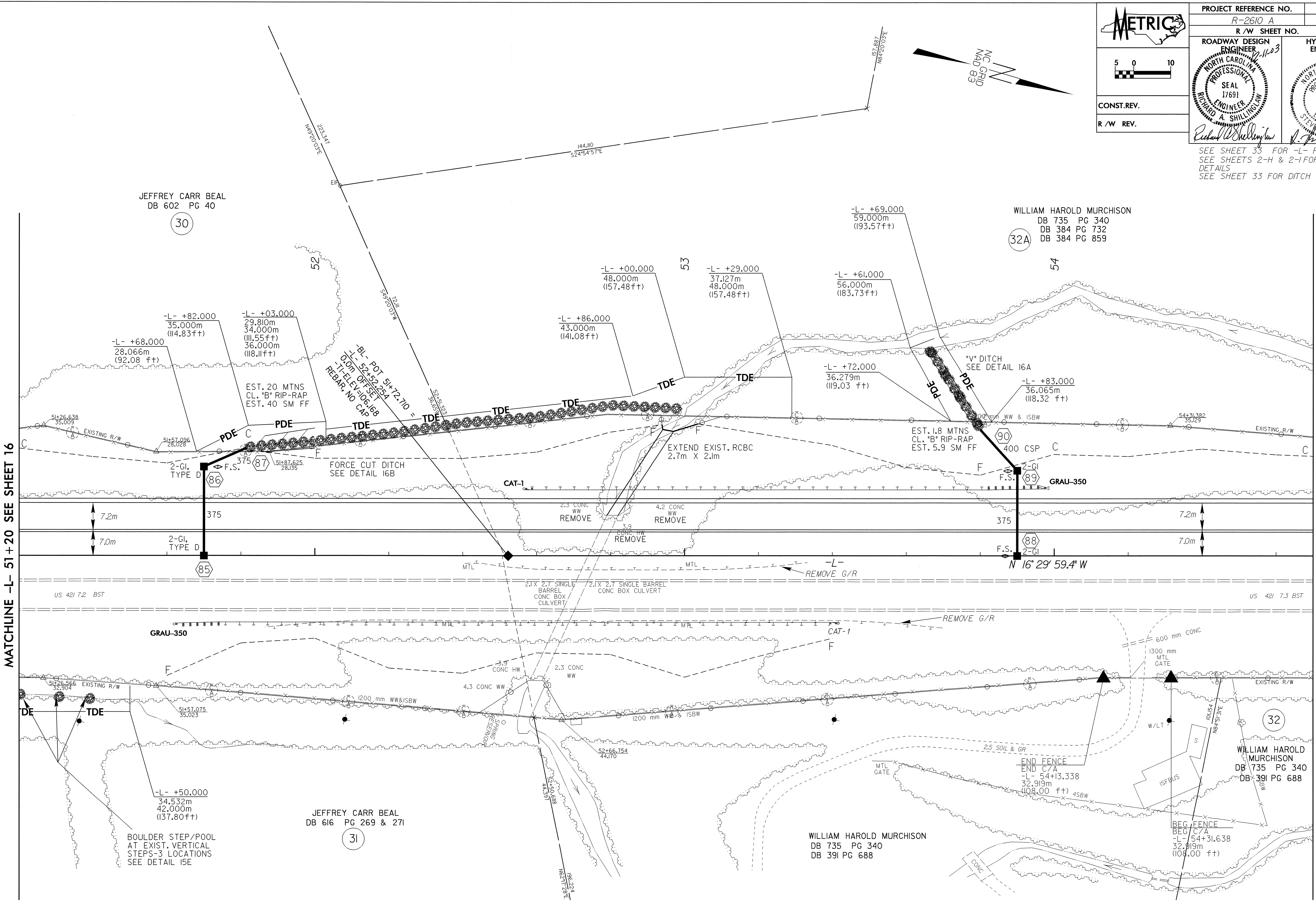
 5 0 10	PROJECT REFERENCE NO. R-2610 A	SHEET NO. 17
	R/W SHEET NO.	
CONSTR. REV.	ROADWAY DESIGN ENGINEER NORTH CAROLINA PROFESSIONAL SEAL 17691 RICHARD A. SHILLINGHAM	HYDRAULICS ENGINEER NORTH CAROLINA PROFESSIONAL SEAL 12786 STEVEN M. BONDOR
R/W REV.	SEE SHEET 35 FOR -L- PROFILE SEE SHEETS 2-H & 2-I FOR DITCH DETAILS SEE SHEET 33 FOR DITCH PROFILES	



REVISIONS

MATCHLINE -L- 51+20 SEE SHEET 16

MATCHLINE -L- 54+70 SEE SHEET 18

04-NOV-2003 14:27  
 R:\proj\2610\DWG\17.dwg  
 Barry A. Bondor