

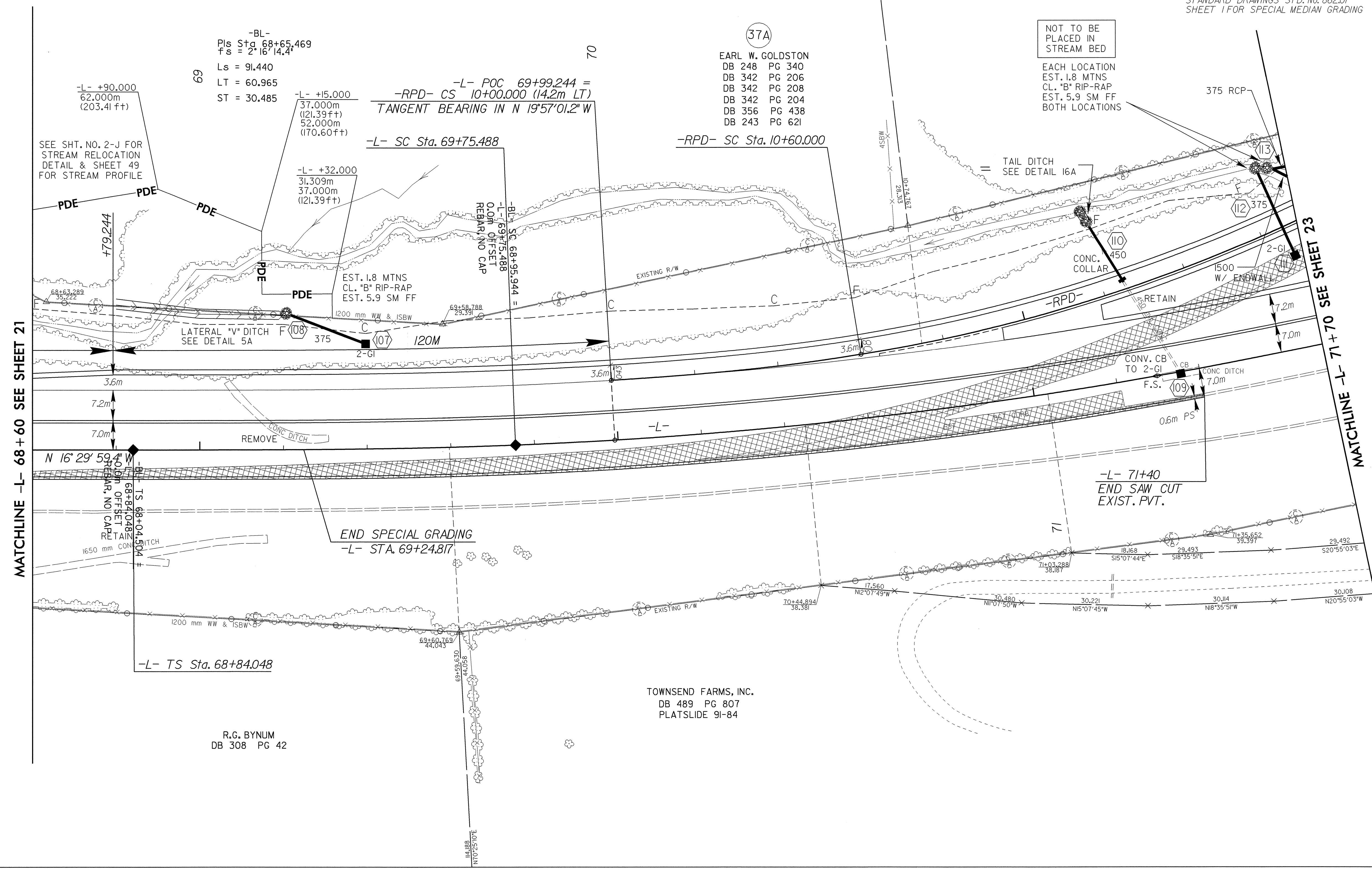
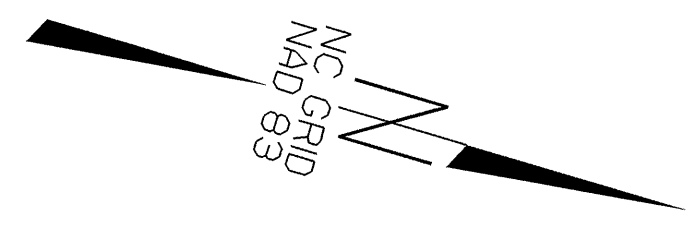
METRIC

CONST. REV.

R/W REV.

PROJECT REFERENCE NO. R-2610 A	SHEET NO. 22
R/W SHEET NO.	
ROADWAY DESIGN ENGINEER 11-03	HYDRAULICS ENGINEER
SEE SHEET 35 FOR -L- PROFILE SEE SHEET 38 FOR -RPD- PROFILE SEE SHEETS 2-H & 2-I FOR DITCH DETAILS SEE SHEET 35 FOR DITCH PROFILES SEE CROSS-SECTIONS AND ROADWAY STANDARD DRAWINGS STD. No. 862.01 SHEET 1 FOR SPECIAL MEDIAN GRADING	

-RPD- Pls Sta 13+03.292 $\Theta_s = 4^\circ 17' 49.9''$ $L_s = 60.000$ $LT = 40.012$ $ST = 20.011$	-RPD- PI Sta 11+74.633 $\Delta = 31^\circ 58' 57.8'' (LT)$ $L = 223.281$ $T = 114.633$ $R = 400.000$ $SE = 08$	-L- Pls Sta 69+45.013 $\Theta_s = 2^\circ 16' 14.4''$ $L_s = 91.440$ $LT = 60.965$ $ST = 30.485$	-L- PI Sta 74+61.092 $\Delta = 45^\circ 39' 18.4'' (LT)$ $L = 919.266$ $T = 485.603$ $R = 1,153.651$ $SE = 0.043$	-RPD- Pls Sta 10+34.829 $\Delta_1 = 1^\circ 30' 29.3''$ $\Delta_2 = 4^\circ 17' 51.2''$ $L_s = 60.000$ $LT = 34.829$ $ST = 25.220$
---	--	---	---	--



REVISIONS

MATCHLINE -L- 68+60 SEE SHEET 21

MATCHLINE -L- 71+70 SEE SHEET 23

FRANCIS WILLIAMS
DB 719 PG 617

37A
EARL W. GOLDSTON
DB 248 PG 340
DB 342 PG 206
DB 342 PG 208
DB 342 PG 204
DB 356 PG 438
DB 243 PG 621

TOWNSEND FARMS, INC.
DB 489 PG 807
PLATSLIDE 91-84

R.G. BYNUM
DB 308 PG 42

04-NOV-2003 11:28
R:\proj\2610\2610.dwg
R:\proj\2610\2610.dwg