

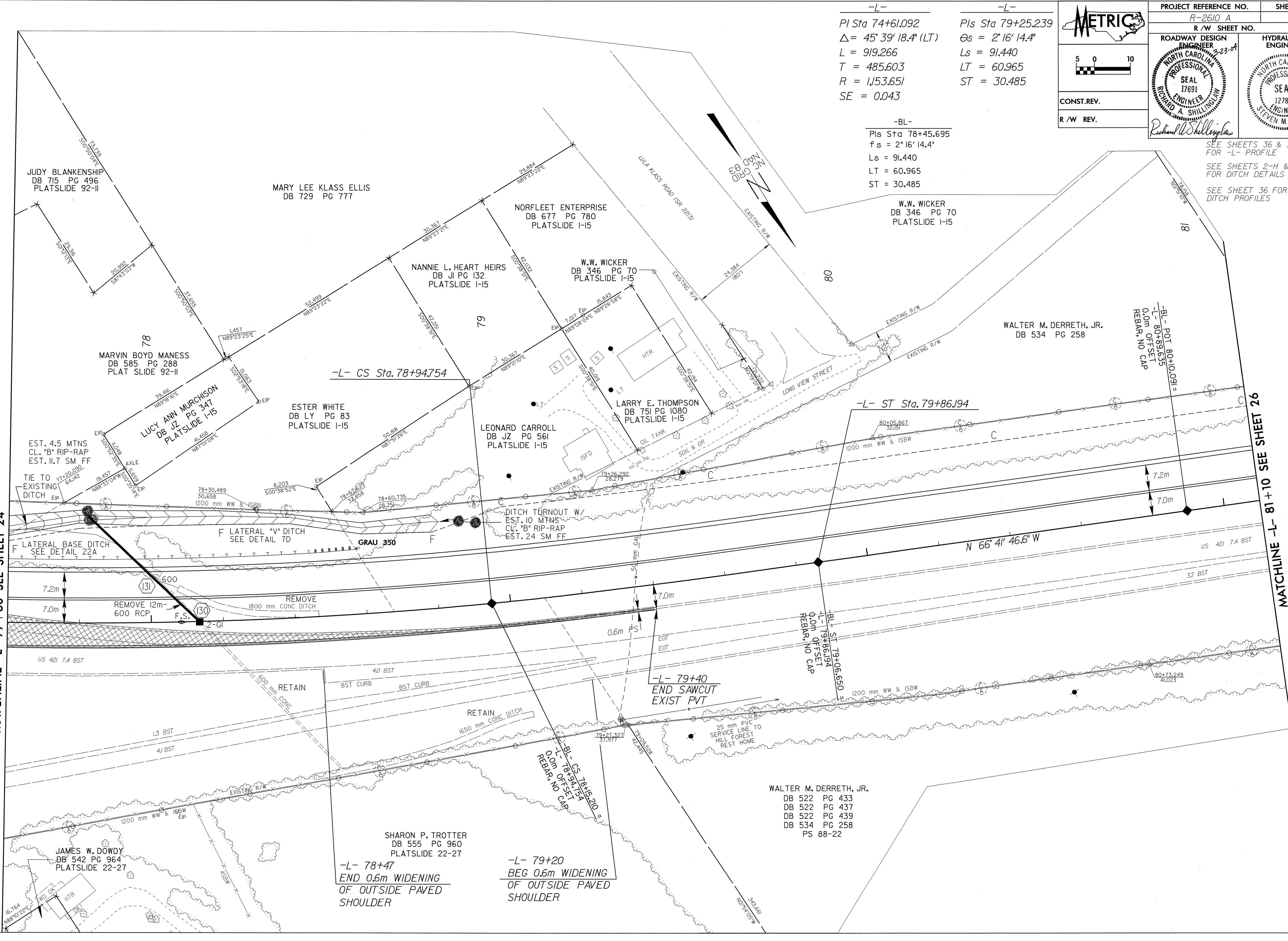
8/17/04

22-MAR-2004 15:48
R:\117117\117117.dwg
R:\117117\117117.dwg

REVISIONS

MATCHLINE -L- 77 +60 SEE SHEET 24

MATCHLINE -L- 81 +10 SEE SHEET 26



-L-
 Pls Sta 74+61.092
 $\Delta = 45^\circ 39' 18.4''$ (LT)
 $L = 919.266$
 $T = 485.603$
 $R = 1,153.651$
 $SE = 0.043$

-L-
 Pls Sta 79+25.239
 $\Theta_s = 2^\circ 16' 14.4''$
 $L_s = 91.440$
 $LT = 60.965$
 $ST = 30.485$

-BL-
 Pls Sta 78+45.695
 $f_s = 2^\circ 16' 14.4''$
 $L_s = 91.440$
 $LT = 60.965$
 $ST = 30.485$

METRIC

5 0 10

CONST. REV.
 R/W REV.

PROJECT REFERENCE NO. R-2610 A SHEET NO. 25
 R/W SHEET NO.

ROADWAY DESIGN ENGINEER
 NORTH CAROLINA PROFESSIONAL SEAL
 17691
 RICHARD A. SHILLINGHAM
 3-23-04

HYDRAULICS ENGINEER
 NORTH CAROLINA PROFESSIONAL SEAL
 12786
 ENGINEER
 STEVEN M. BONDUR
 3-29-04

Richard Whittingham

SEE SHEETS 36 & 37 FOR -L- PROFILE
 SEE SHEETS 2-H & 2-I FOR DITCH DETAILS
 SEE SHEET 36 FOR DITCH PROFILES

WALTER M. DERRETH, JR.
 DB 522 PG 433
 DB 522 PG 437
 DB 522 PG 439
 DB 534 PG 258
 PS 88-22

SHARON P. TROTTER
 DB 555 PG 960
 PLATSLIDE 22-27

-L- 78+47
 END 0.6m WIDENING
 OF OUTSIDE PAVED
 SHOULDER

-L- 79+20
 BEG 0.6m WIDENING
 OF OUTSIDE PAVED
 SHOULDER