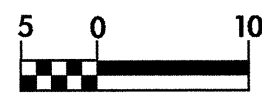
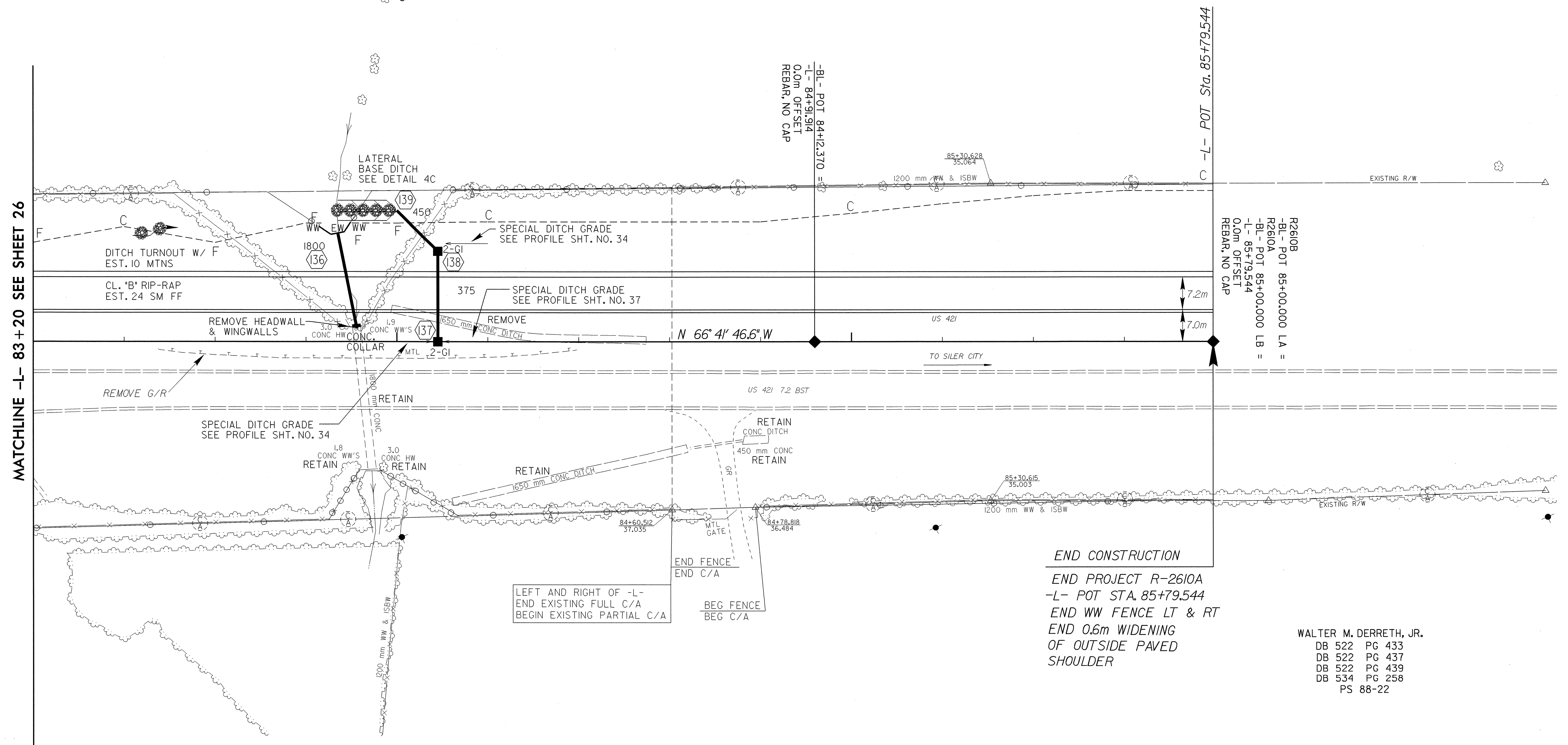
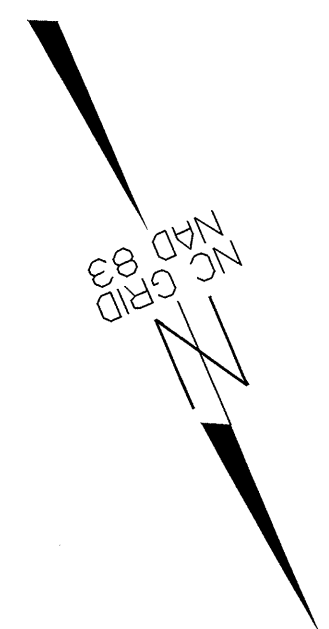
	PROJECT REFERENCE NO. R-2610 A	SHEET NO. 27
	R/W SHEET NO.	
	ROADWAY DESIGN ENGINEER 3-23-04 NORTH CAROLINA PROFESSIONAL ENGINEER SEAL 17691 RICHARD A. SHILLINGLAW	HYDRAULICS ENGINEER NORTH CAROLINA PROFESSIONAL ENGINEER SEAL 12786 STEVEN M. BONDOR
	CONST. REV.	
R/W REV.		3-29-04

SEE SHEET 37 FOR -L- PROFILE
SEE SHEETS 2-H & 2-I FOR DITCH DETAILS
SEE SHEET 37 FOR DITCH PROFILES

CHARLES F. BRANCH
DB 617 PG 580
PLAT SLIDE 93-183



R2610B
-BL- POT 85+00.000 LA =
R2610A
-BL- POT 85+00.000 LB =
-L- 85+79.544
0.0m OFFSET
REBAR, NO CAP

END CONSTRUCTION
END PROJECT R-2610A
-L- POT STA. 85+79.544
END WW FENCE LT & RT
END 0.6m WIDENING
OF OUTSIDE PAVED
SHOULDER

WALTER M. DERRETH, JR.
DB 522 PG 433
DB 522 PG 437
DB 522 PG 439
DB 534 PG 258
PS 88-22

REVISIONS

8/17/99

22-MAR-2004 1548
RD187117