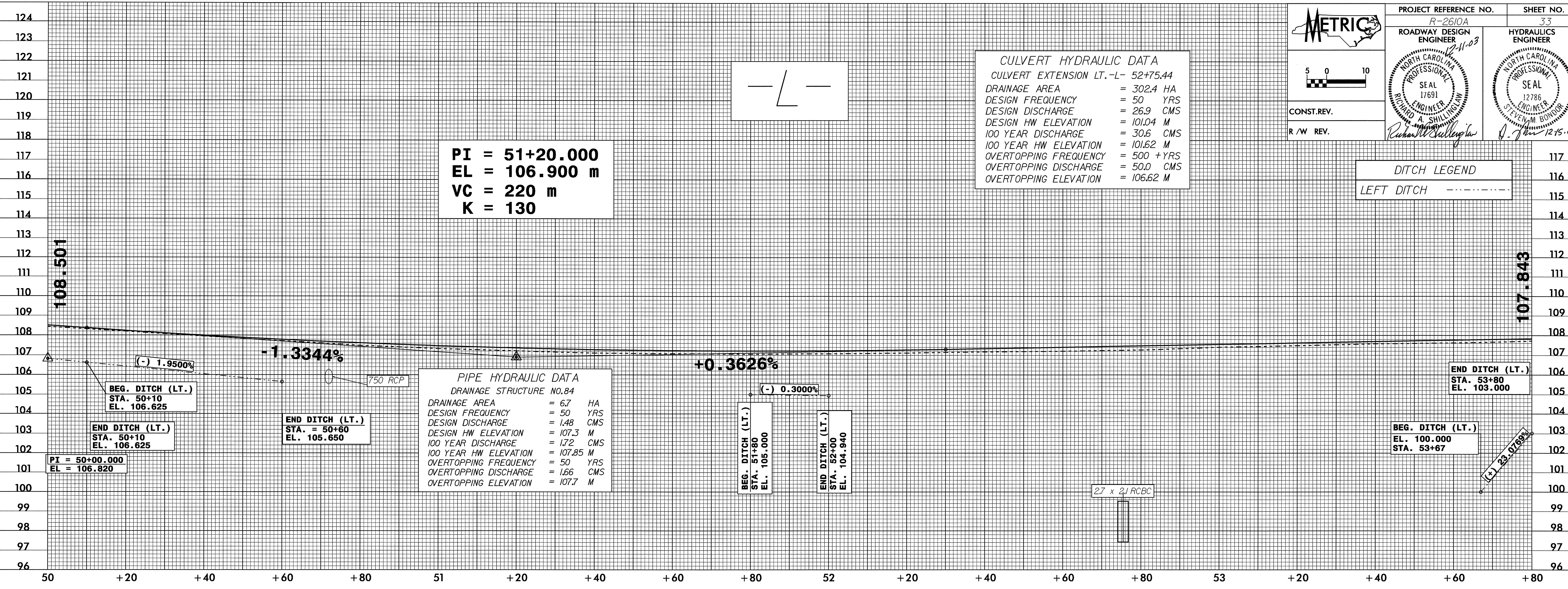


10/26/03



METRIC

PROJECT REFERENCE NO. R-2610A SHEET NO. 33

ROADWAY DESIGN ENGINEER 12-11-03

HYDRAULICS ENGINEER

CONST. REV.

R/W REV.

SEAL 17691

SEAL 12786

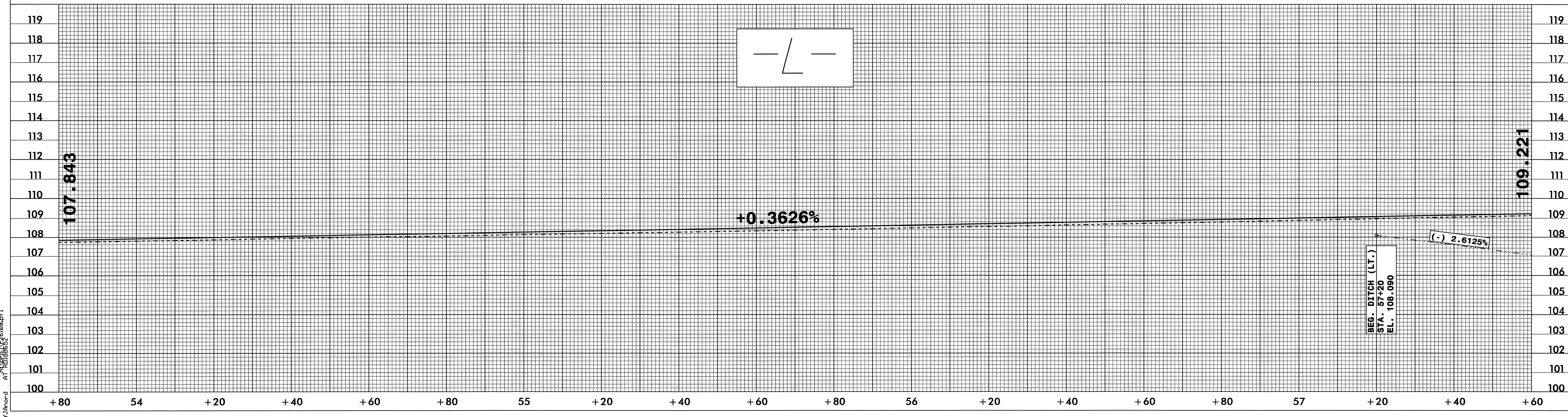
12-15-03

PI = 51+20.000
 EL = 106.900 m
 VC = 220 m
 K = 130

CULVERT HYDRAULIC DATA
 CULVERT EXTENSION LT.-L- 52+75.44
 DRAINAGE AREA = 302.4 HA
 DESIGN FREQUENCY = 50 YRS
 DESIGN DISCHARGE = 26.9 CMS
 DESIGN HW ELEVATION = 101.04 M
 100 YEAR DISCHARGE = 30.6 CMS
 100 YEAR HW ELEVATION = 101.62 M
 OVERTOPPING FREQUENCY = 500 + YRS
 OVERTOPPING DISCHARGE = 50.0 CMS
 OVERTOPPING ELEVATION = 106.62 M

PIPE HYDRAULIC DATA
 DRAINAGE STRUCTURE NO. 84
 DRAINAGE AREA = 6.7 HA
 DESIGN FREQUENCY = 50 YRS
 DESIGN DISCHARGE = 1.48 CMS
 DESIGN HW ELEVATION = 107.3 M
 100 YEAR DISCHARGE = 1.72 CMS
 100 YEAR HW ELEVATION = 107.85 M
 OVERTOPPING FREQUENCY = 50 YRS
 OVERTOPPING DISCHARGE = 1.66 CMS
 OVERTOPPING ELEVATION = 107.7 M

DITCH LEGEND
 LEFT DITCH - - - - -



03-NOV-2003 07:32
V:\Road\AT\1008852\2100.pfl