

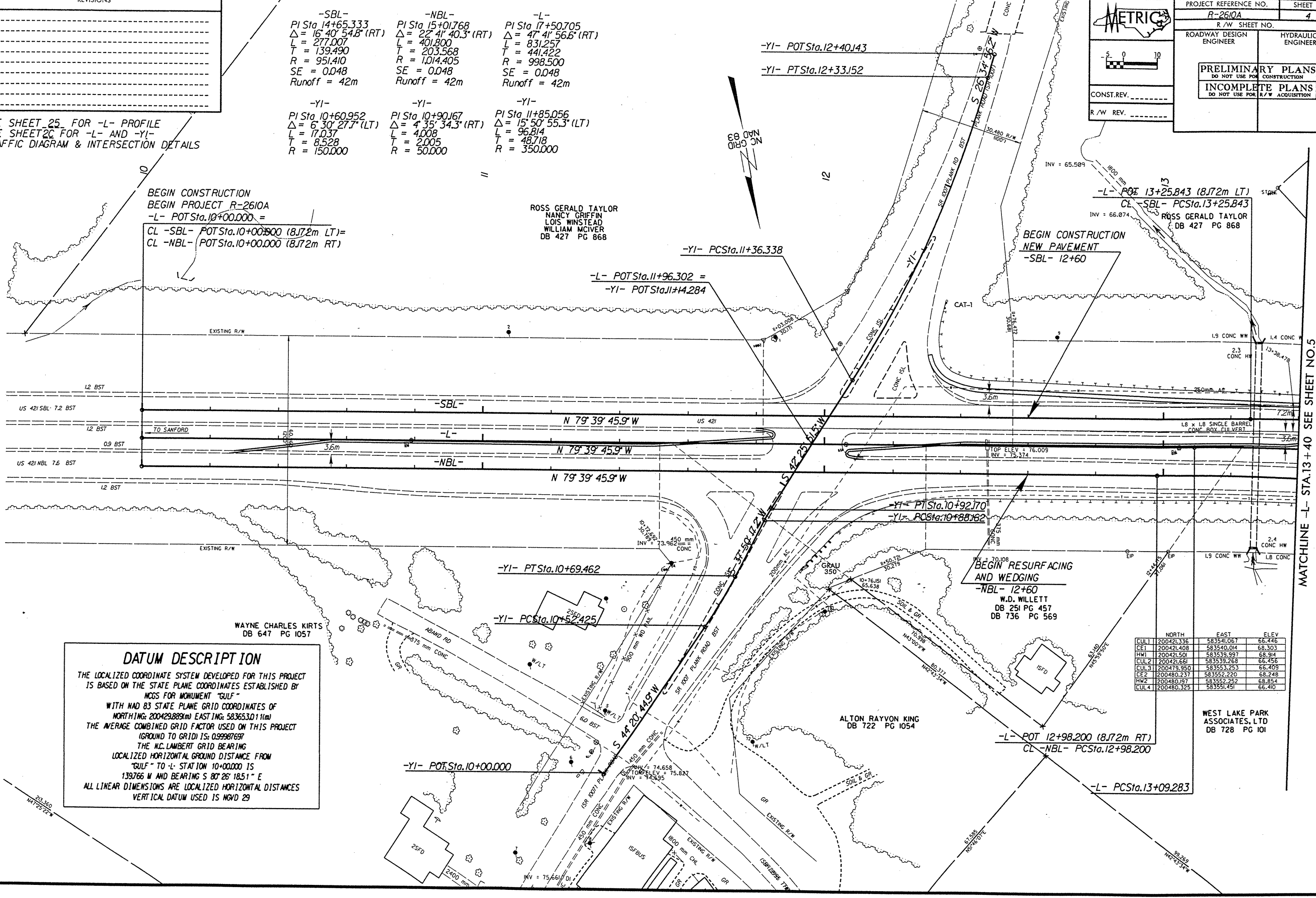
| | | |
|----------------------------------------------------------------------------------------------------------------------------------------|------------------------------------------------------------------------------------------------------------------------------------------|--------------------------------------------------------------------------------------------------------------------------------------|
| -SBL- PI Sta 14+65.333 $\Delta = 16' 40' 54.8''$ (RT) L = 277.007 T = 139.490 R = 951.410 SE = 0.048 Runoff = 42m | -NBL- PI Sta 15+01.768 $\Delta = 22' 41' 40.3''$ (RT) L = 401.800 T = 203.568 R = 1,014.405 SE = 0.048 Runoff = 42m | -L- PI Sta 17+50.705 $\Delta = 47' 41' 56.6''$ (RT) L = 831.257 T = 441.422 R = 998.500 SE = 0.048 Runoff = 42m |
| -YI- PI Sta 10+60.952 L = 17.037 T = 8.528 R = 150.000 | -YI- PI Sta 10+90.167 $\Delta = 4' 35' 34.3''$ (RT) L = 4.008 T = 2.005 R = 50.000 | -YI- PI Sta 11+85.056 $\Delta = 15' 50' 55.3''$ (LT) L = 96.814 T = 48.718 R = 350.000 |

SEE SHEET 25 FOR -L- PROFILE
SEE SHEET 26 FOR -L- AND -YI-
TRAFFIC DIAGRAM & INTERSECTION DETAILS

BEGIN CONSTRUCTION
BEGIN PROJECT R-2610A

-L- POT Sta. 10+00.000 =
CL -SBL- POT Sta. 10+00.000 (8.172m LT)=
CL -NBL- POT Sta. 10+00.000 (8.172m RT)

ROSS GERALD TAYLOR
NANCY GRIFFIN
LOIS WINSTEAD
WILLIAM MCIVER
DB 427 PG 868



DATUM DESCRIPTION

THE LOCALIZED COORDINATE SYSTEM DEVELOPED FOR THIS PROJECT IS BASED ON THE STATE PLANE COORDINATES ESTABLISHED BY NCGS FOR MONUMENT "GULF" WITH NAD 83 STATE PLANE GRID COORDINATES OF NORTHING: 200429.889(m) EASTING: 58365.3011(m) THE AVERAGE COMBINED GRID FACTOR USED ON THIS PROJECT (GROUND TO GRID) IS: 0.99987697 THE N.C. LAMBERT GRID BEARING LOCALIZED HORIZONTAL GROUND DISTANCE FROM "GULF" TO -L- STATION 10+00.000 IS 139766 M AND BEARING S 80° 26' 18.51" E ALL LINEAR DIMENSIONS ARE LOCALIZED HORIZONTAL DISTANCES VERTICAL DATUM USED IS NGVD 29

| | NORTH | EAST | ELEV |
|------|------------|------------|--------|
| CUL1 | 200421.336 | 583541.067 | 66.446 |
| CE1 | 200421.408 | 583540.014 | 68.303 |
| HW1 | 200421.501 | 583539.997 | 68.914 |
| CUL2 | 200421.661 | 583539.268 | 66.456 |
| CUL3 | 200479.950 | 583553.253 | 66.409 |
| CE2 | 200480.237 | 583552.220 | 68.248 |
| HW2 | 200480.197 | 583552.252 | 68.854 |
| CUL4 | 200480.325 | 583551.451 | 66.410 |

WEST LAKE PARK ASSOCIATES, LTD
DB 728 PG 101

MATCHLINE -L- STA.13+40 SEE SHEET NO.5