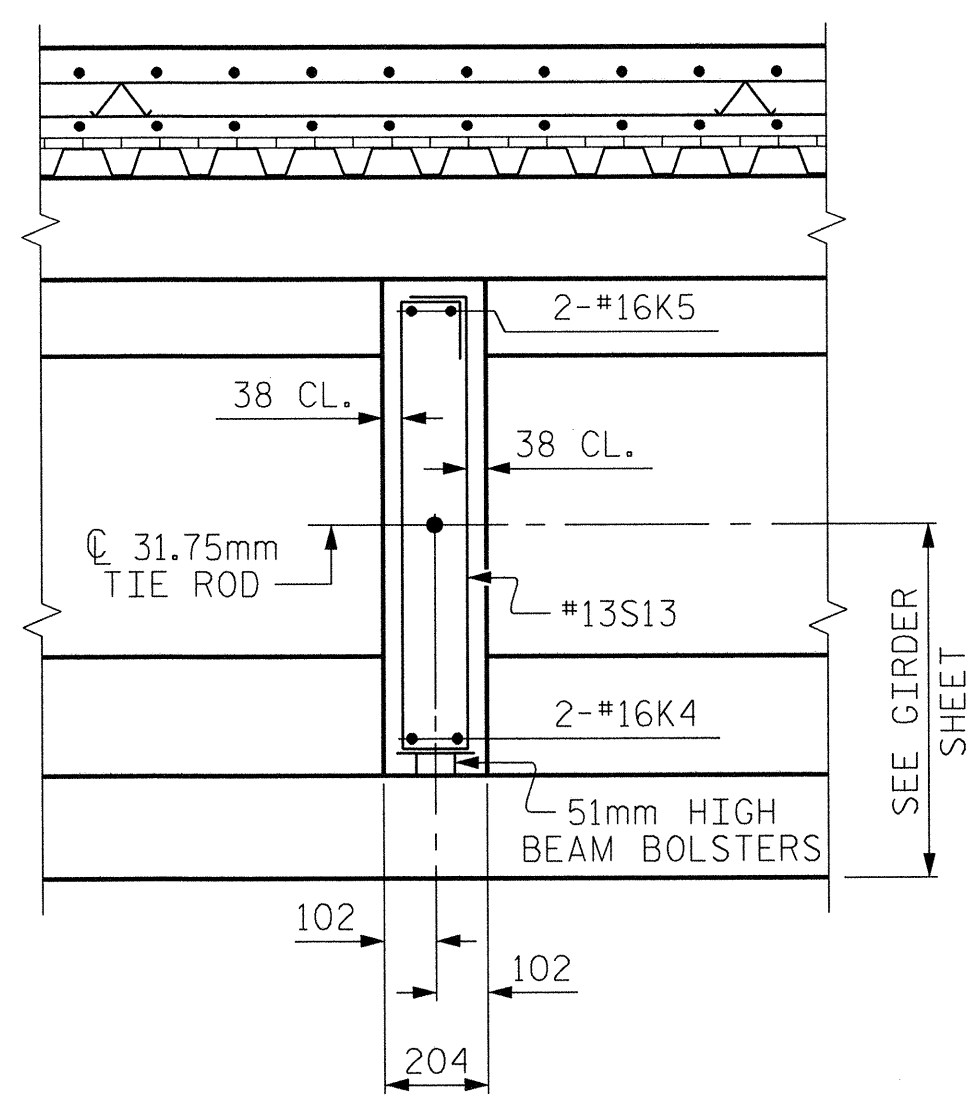
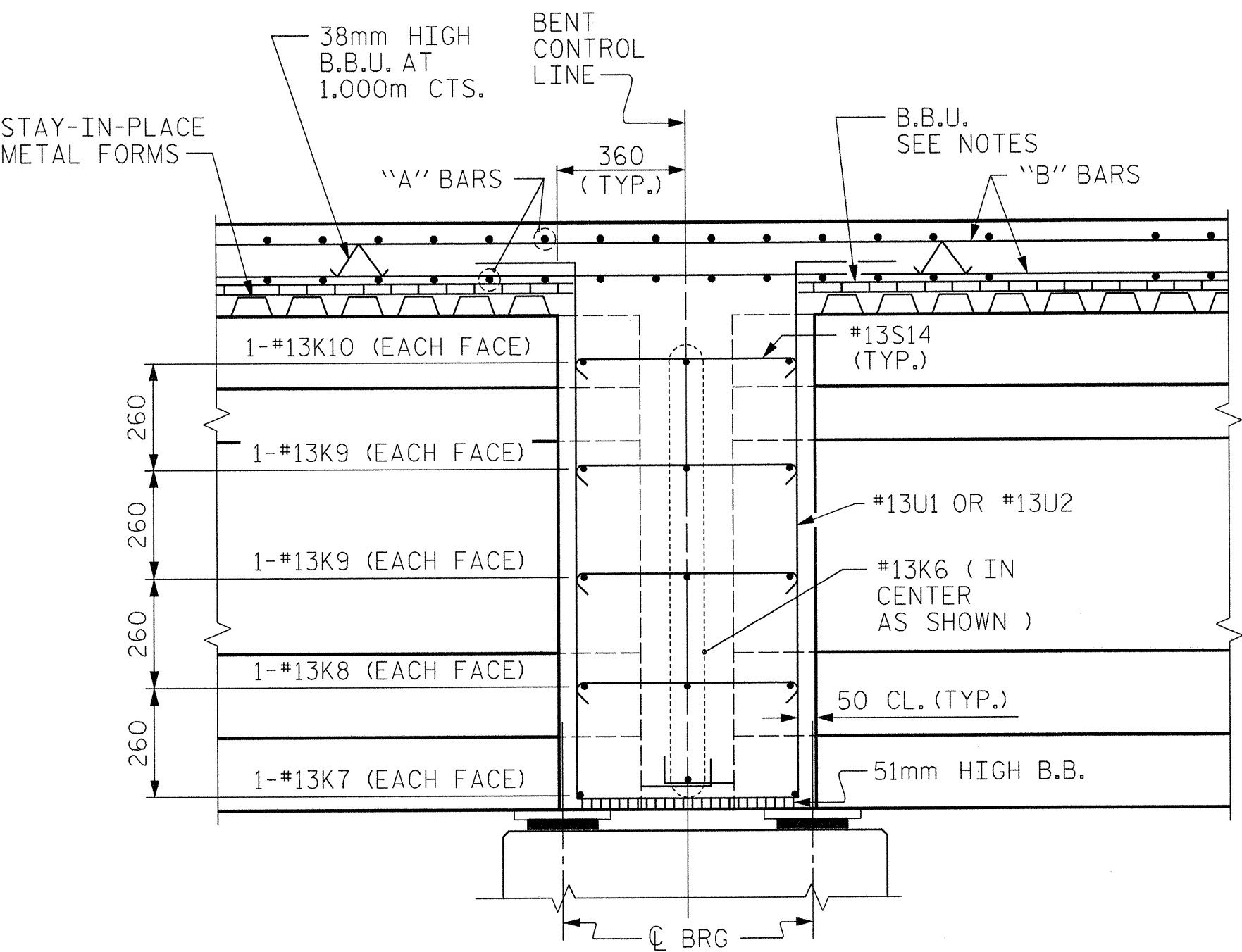


**SECTION A - A**

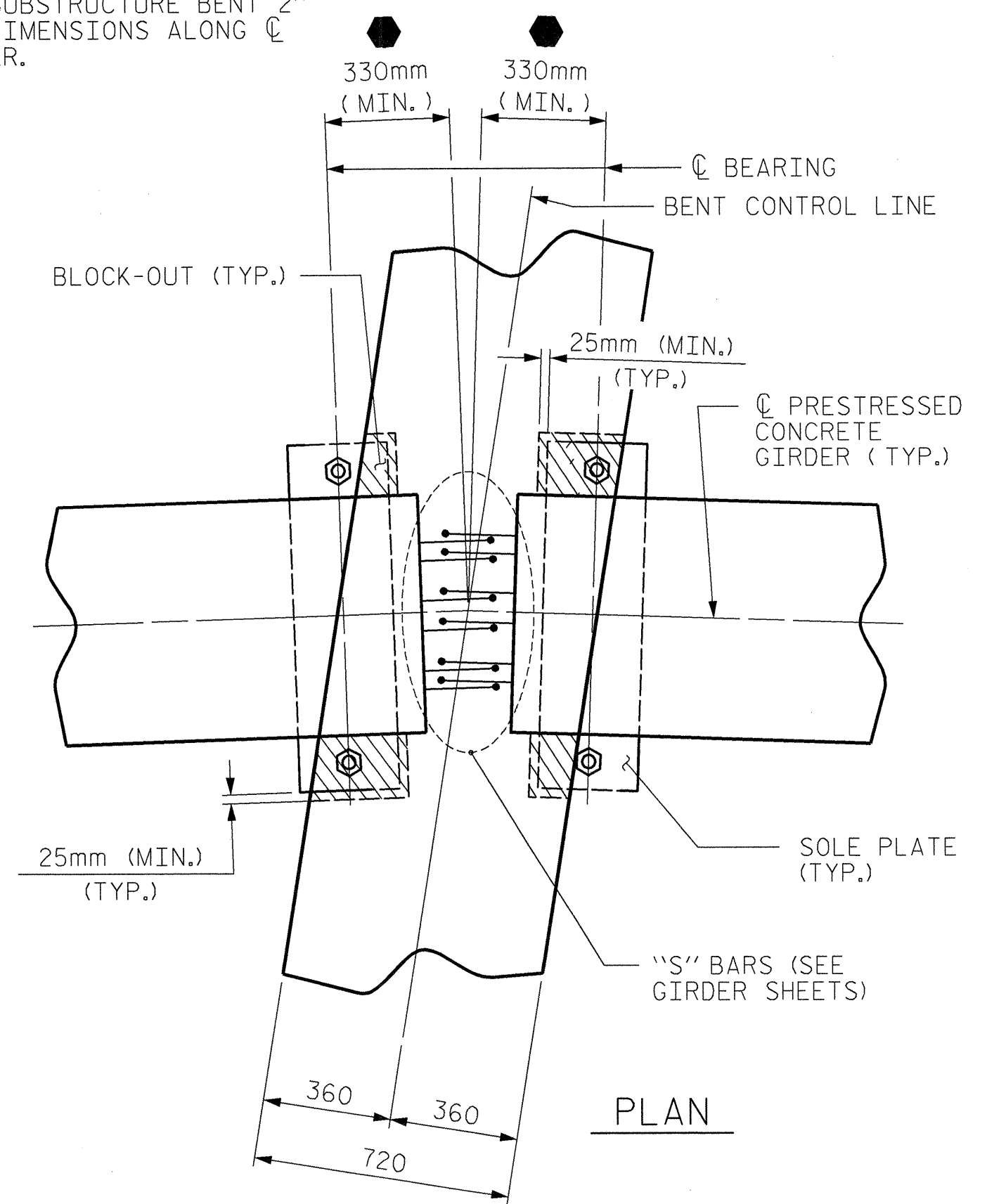
\* #16 "G" BAR MAY BE SHIFTED SLIGHTLY AS NECESSARY TO CLEAR REINFORCING STEEL AND STIRRUPS.



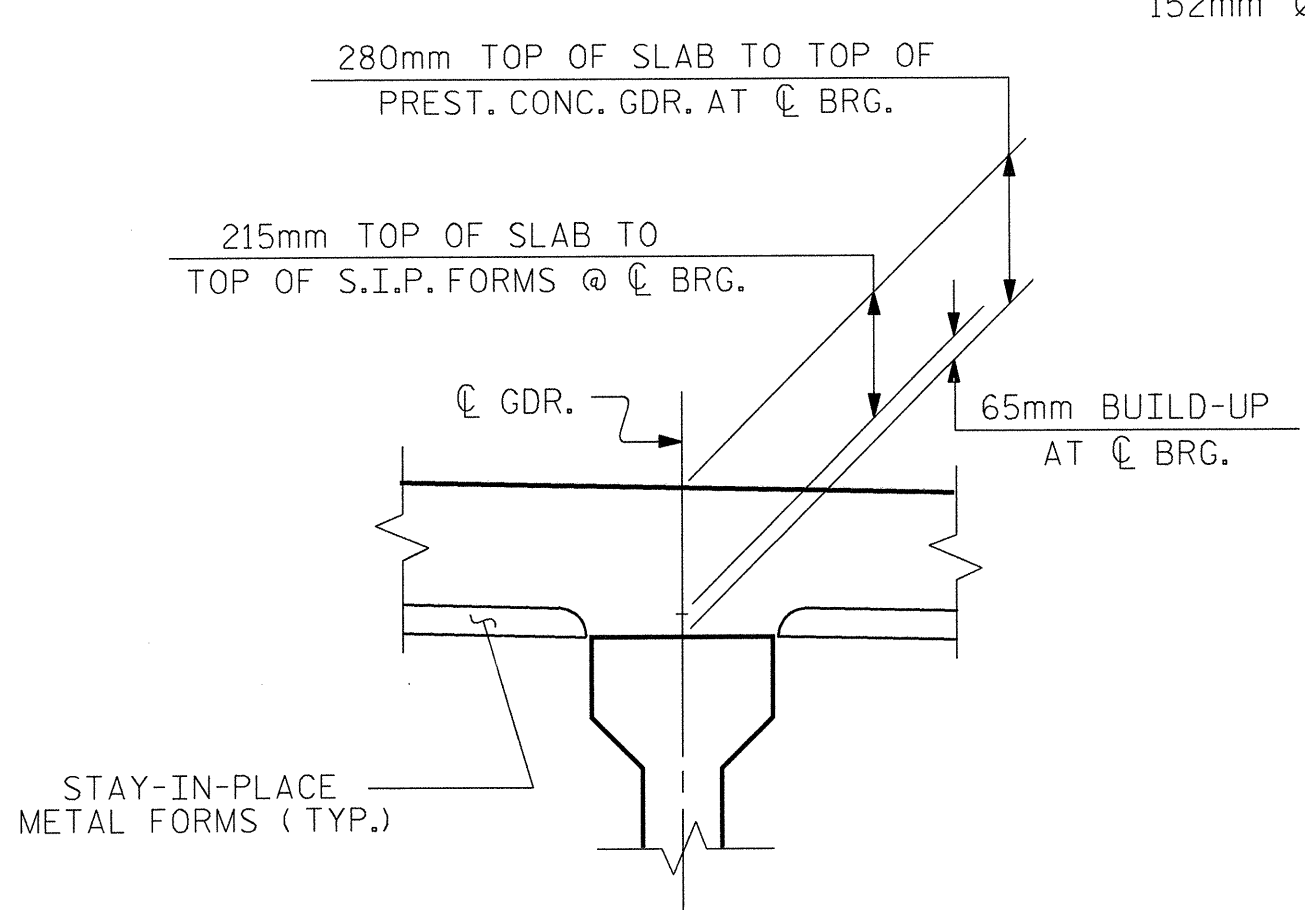
**SECTION B - B**



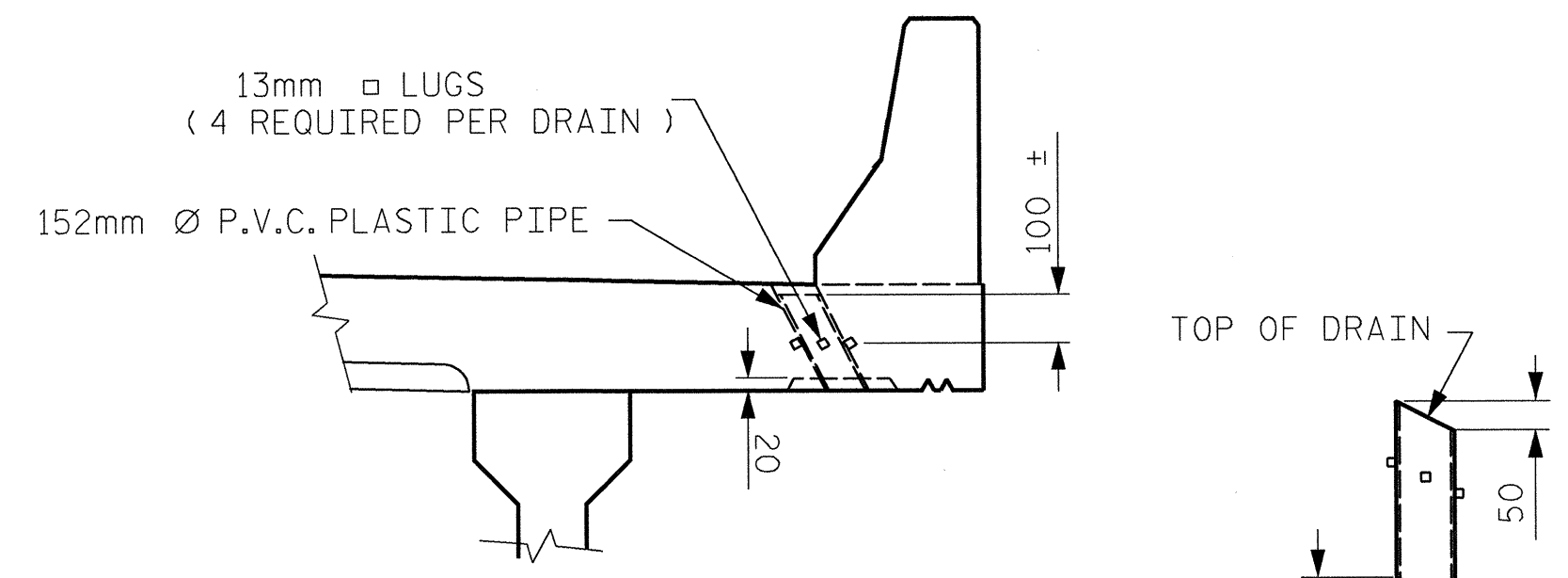
**SECTION C - C**



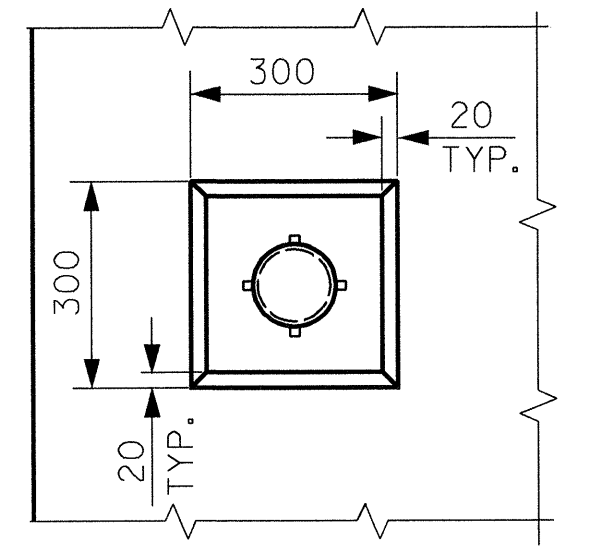
**PLAN**



**DETAIL "A"**



**ELEVATION**



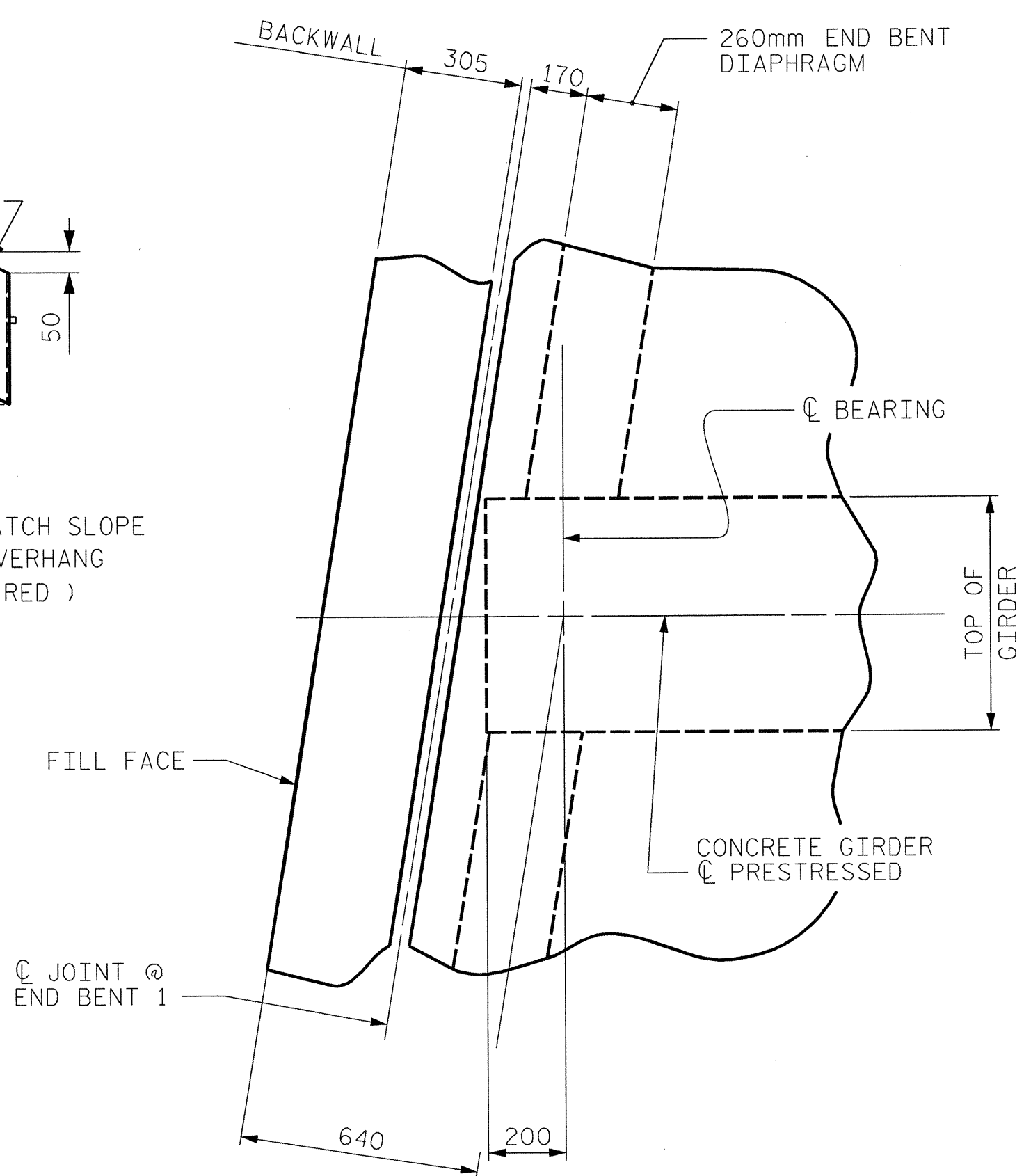
**PLAN OF RECESS**

**PIPE DETAIL**

\* TO BE SET TO MATCH SLOPE OF BOTTOM OF OVERHANG (6 DRAINS REQUIRED)

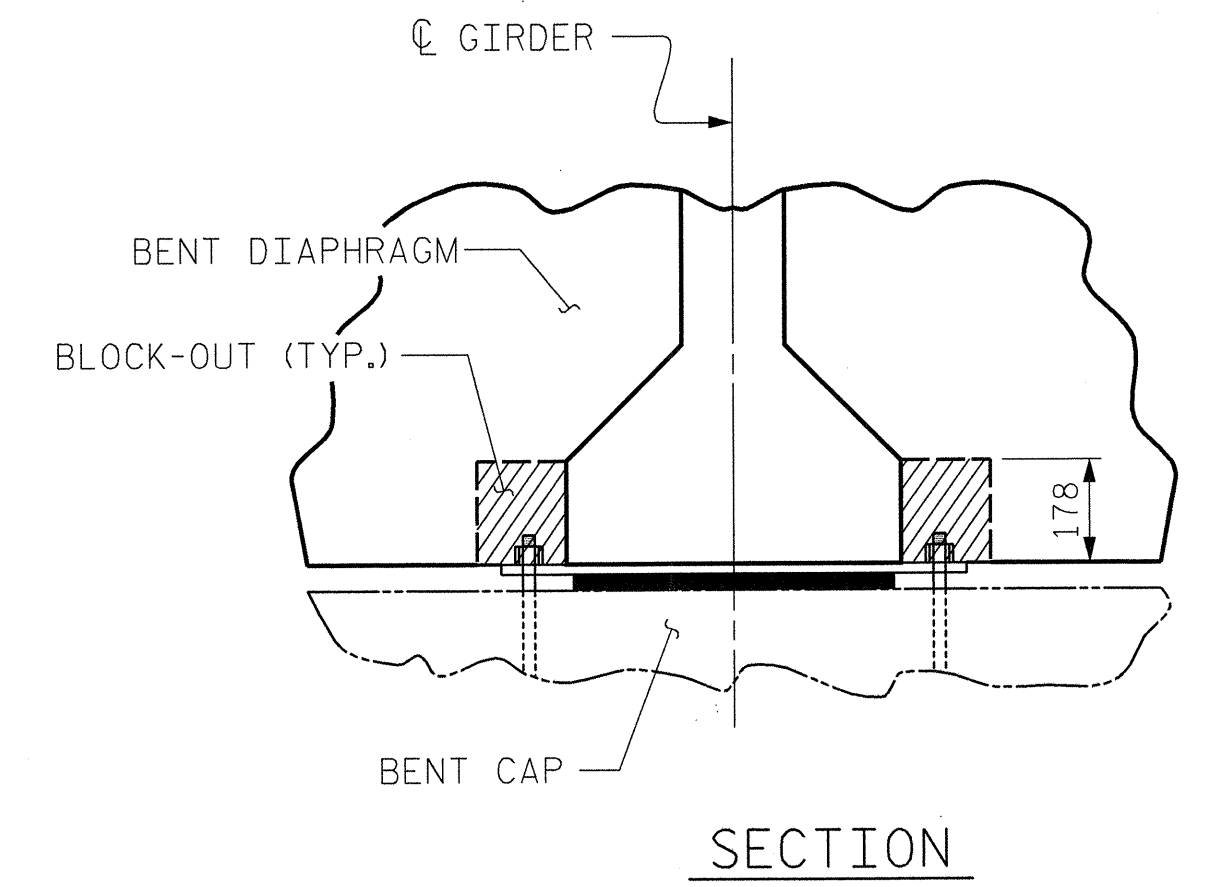
TOP OF FLOOR DRAINS TO SET 10mm BELOW SURFACE OF SLAB.  
 4 - 13mm square LUGS TO BE GLUED TO THE P.V.C. PLASTIC PIPE AT EQUAL SPACES AROUND THE PIPE DRAIN.

**DRAIN DETAILS**



**END BENT 1 DIAPHRAGM**  
 (END BENT 2 SIMILAR)

SEE "SUBSTRUCTURE BENT 1 AND SUBSTRUCTURE BENT 2" FOR DIMENSIONS ALONG CL GIRDER.

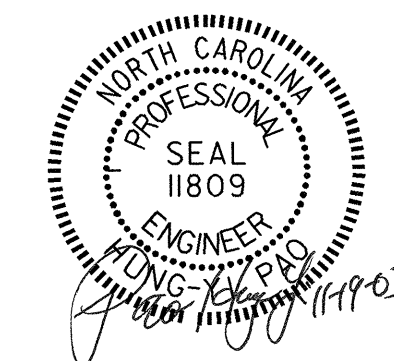


**SECTION**

**BENT DIAPHRAGM BLOCK-OUT DETAIL**

PROJECT NO. R-2610A  
CHATHAM COUNTY  
 STATION: 18+04.666 -L-

SHEET 2 OF 2



STATE OF NORTH CAROLINA  
 DEPARTMENT OF TRANSPORTATION  
 RALEIGH  
 SUPERSTRUCTURE  
 TYPICAL SECTIONS  
 (LEFT LANE BRIDGE)

REVISIONS						SHEET NO.
NO.	BY:	DATE:	NO.	BY:	DATE:	TOTAL SHEETS
1			3			5-6
2			4			02

STR.#1

Stantec Consulting Services Inc.  
 Suite 300, 801 Jones Franklin Road  
 Raleigh, NC 27606  
 Tel. 919.851.6866  
 Fax. 919.851.7024  
 www.stantec.com

DRAWN BY: M. J. OSTRISHKO DATE: 7-29-03  
 CHECKED BY: H. PAO DATE: 10-13-03