

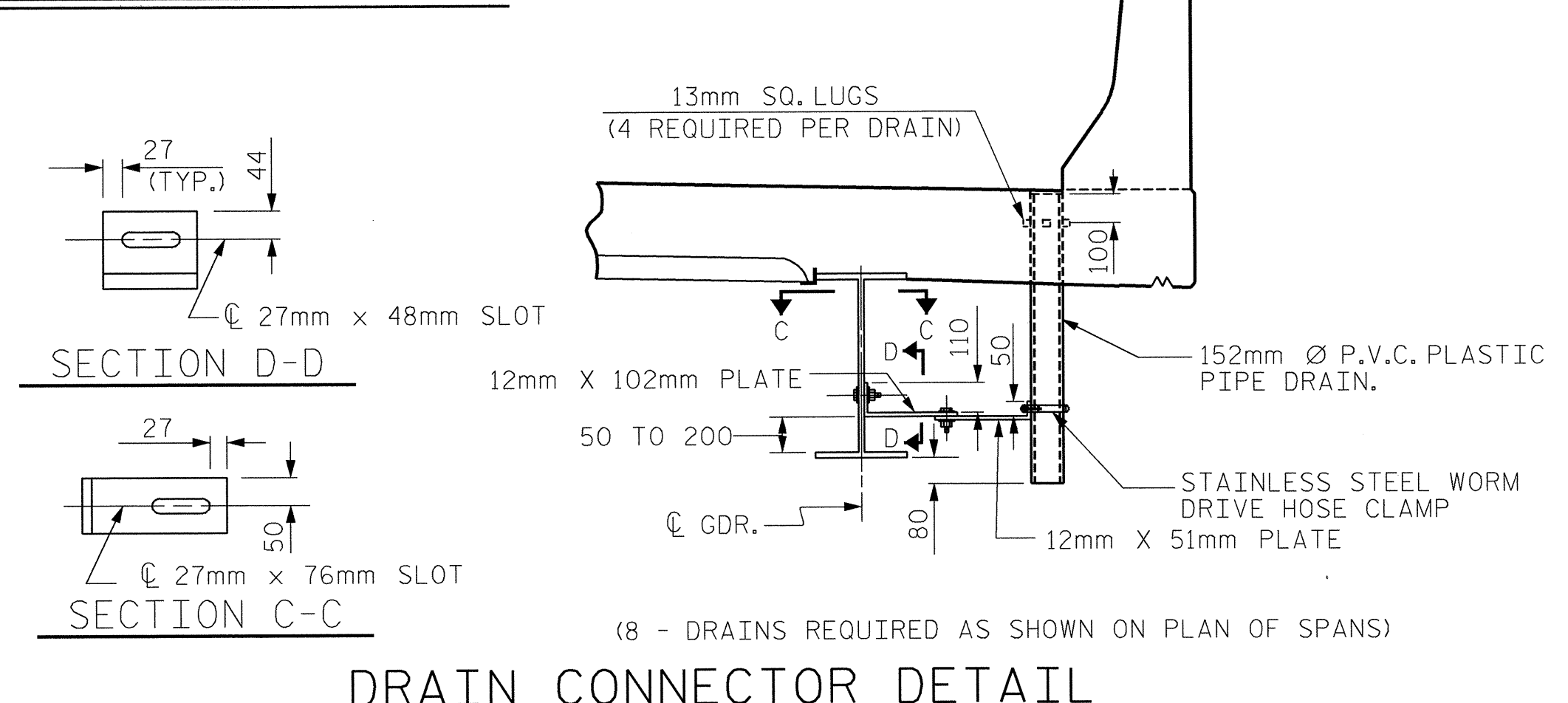
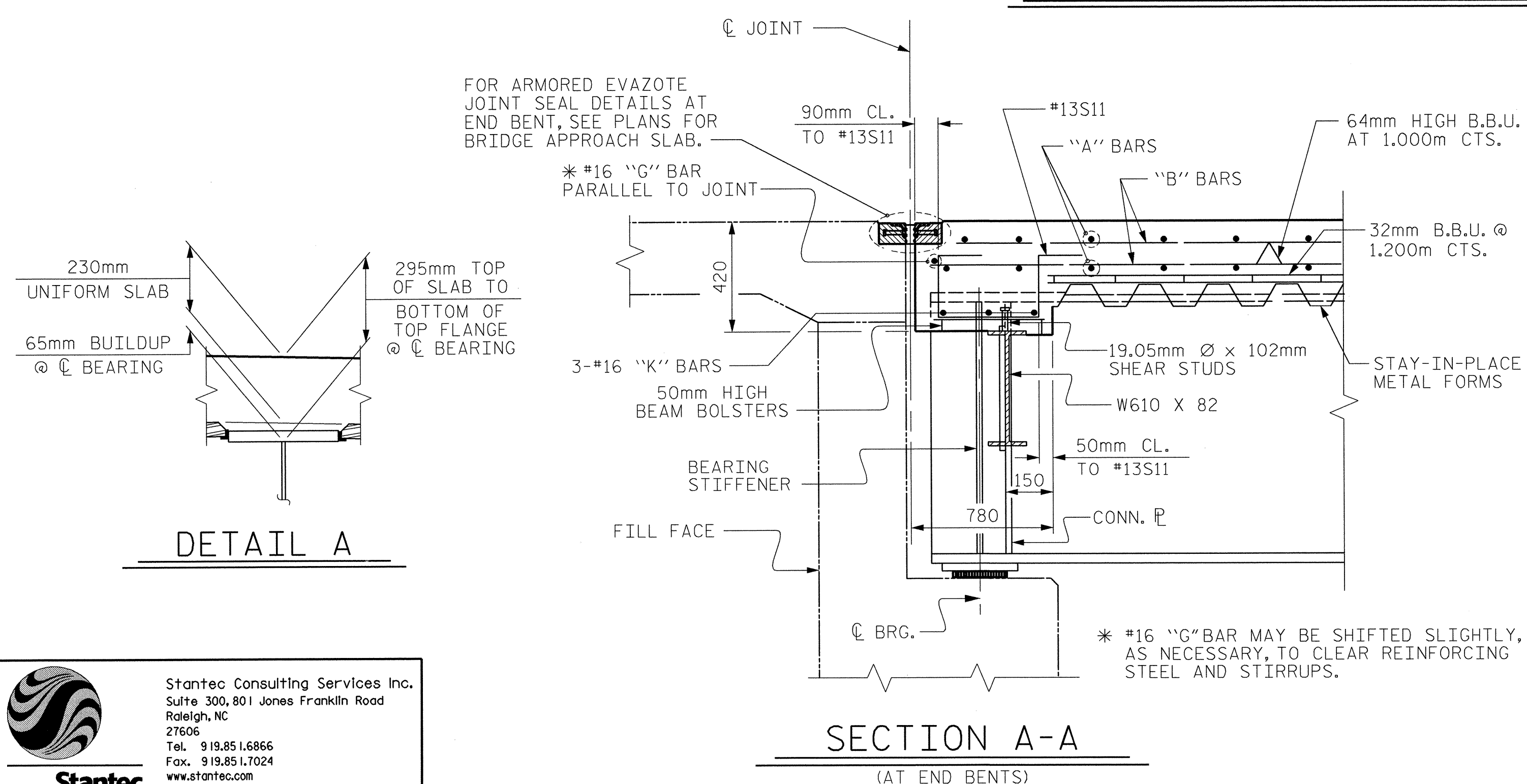
**TYPICAL HALF SECTION AT END BENTS AND BENTS 1 & 2 DIAPHRAGMS**

FOR BENT DIAPHRAGM LOCATIONS AND TYPES, SEE "STRUCTURAL STEEL DETAILS (FRAMING PLAN)" SHEET.  
 FOR STEEL DIAPHRAGM DETAILS, SEE "STRUCTURAL STEEL DETAILS" SHEETS.

**TYPICAL HALF SECTION AT INTERMEDIATE DIAPHRAGMS**

FOR INTERMEDIATE DIAPHRAGM LOCATIONS AND TYPE, SEE "STRUCTURAL STEEL DETAILS (FRAMING PLAN)" SHEET.  
 FOR STEEL DIAPHRAGM DETAILS, SEE "STRUCTURAL STEEL DETAILS" SHEETS.

**TYPICAL SECTIONS FOR SPANS A OR C**



COUPLING IN DRAIN PIPE WILL BE PERMITTED AS APPROVED BY THE ENGINEER.

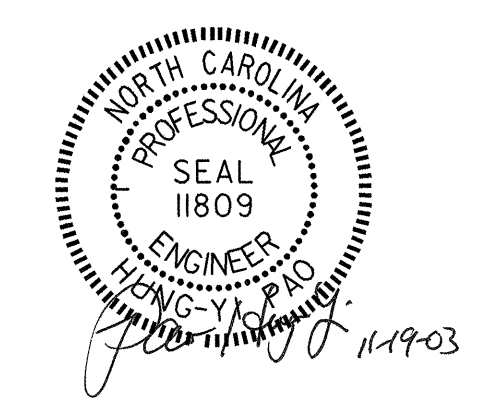
TOP OF FLOOR DRAINS TO BE SET 10mm BELOW SURFACES OF SLAB.

4- 13mm SQ. LUGS TO BE GLUED TO THE P.V.C. PLASTIC PIPE AT EQUAL SPACES AROUND THE PIPE DRAIN APPROXIMATELY 100mm FROM TOP OF THE PIPE.

BOLT SIZE TO BE SAME AS DIAPHRAGM AND CROSSFRAME CONNECTIONS. STAINLESS STEEL WORM HOSE CLAMP SHALL BE COMMERCIAL QUALITY.

THE 152mm Ø PVC PLASTIC PIPE AND FITTINGS SHALL BE SCHEDULE 40 AND CONFORM TO ASTM D1785.

PVC DECK DRAINS SHALL BE PAINTED WITH TWO COATS OF BROWN PRIMER MEETING THE REQUIREMENTS OF ARTICLE 1080-12 OF THE STANDARD SPECIFICATIONS. EACH COAT SHALL BE 0.050mm THICK. DECK DRAINS SHALL BE ROUGHENED PRIOR TO PAINTING. NO SEPARATE PAYMENT SHALL BE MADE FOR PAINTING PVC DECK DRAINS AS THIS IS CONSIDERED INCIDENTAL TO THE PAY ITEM FOR REINFORCED CONCRETE DECK SLAB.



PROJECT NO. R-2610A  
 CHATHAM COUNTY  
 STATION: 27+85.488 -L-  
 SHEET 1 OF 2

STATE OF NORTH CAROLINA DEPARTMENT OF TRANSPORTATION RALEIGH						SHEET NO. 5-44	
SUPERSTRUCTURE TYPICAL SECTION (LEFT LANE BRIDGE)						TOTAL SHEETS 02	
REVISIONS							
NO.	BY:	DATE:	NO.	BY:	DATE:		
1			3				
2			4				

**Stantec**  
 Stantec Consulting Services Inc.  
 Suite 300, 801 Jones Franklin Road  
 Raleigh, NC 27606  
 Tel. 919.851.6866  
 Fax. 919.851.7024  
 www.stantec.com

DRAWN BY: M. J. OSTRISHKO DATE: 3-03  
 CHECKED BY: S. R. BEABES DATE: 7-03