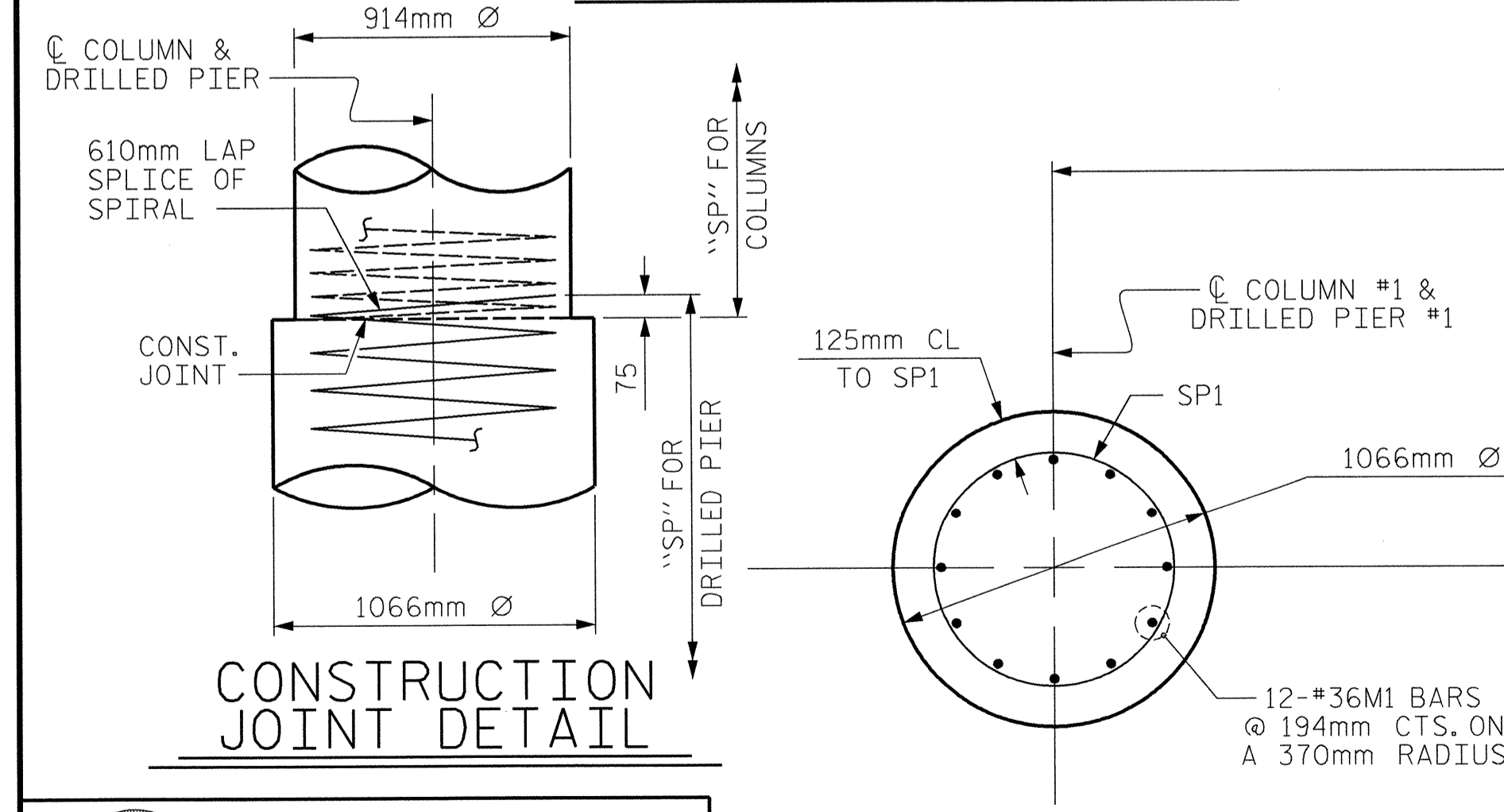
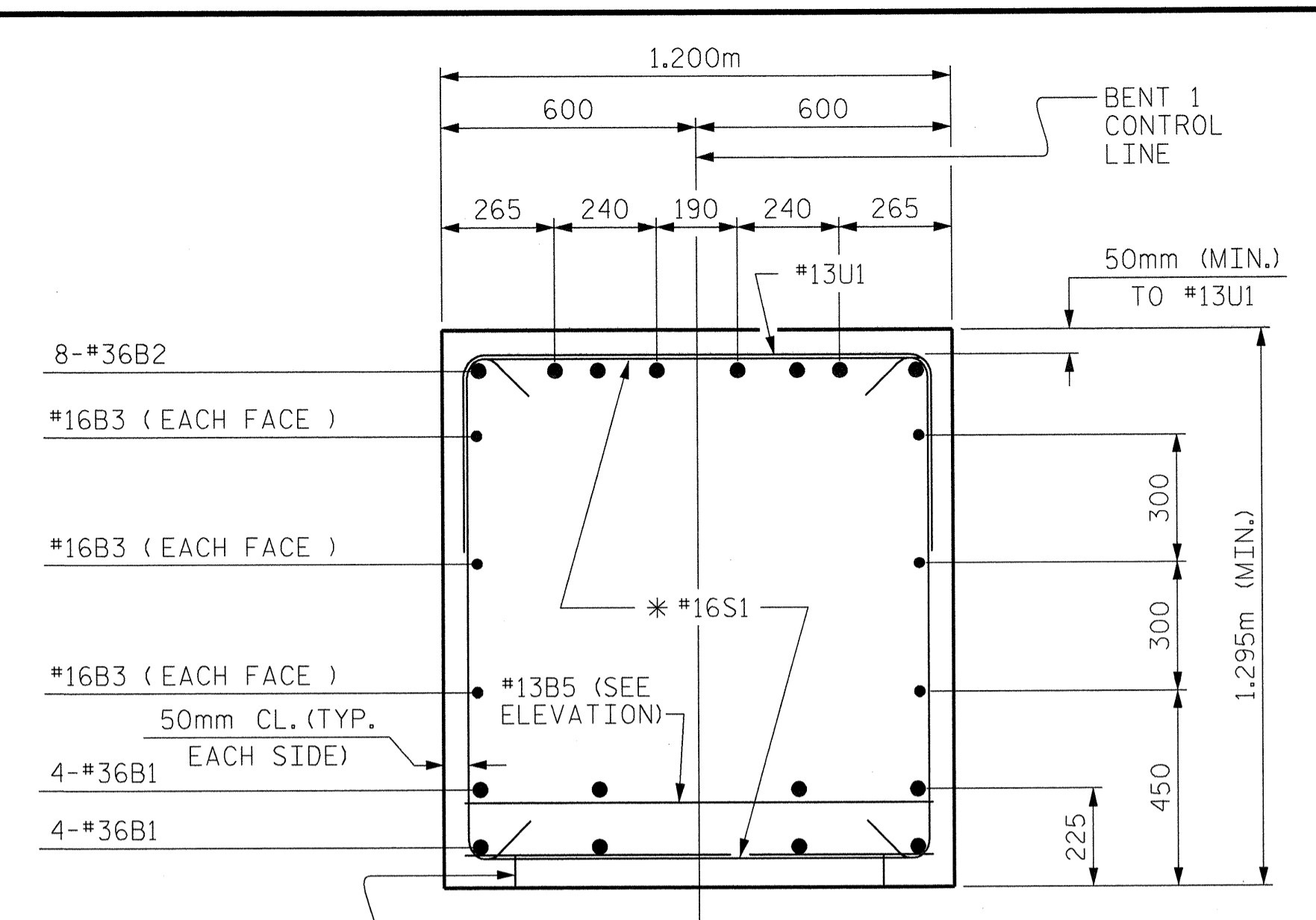


END ELEVATION

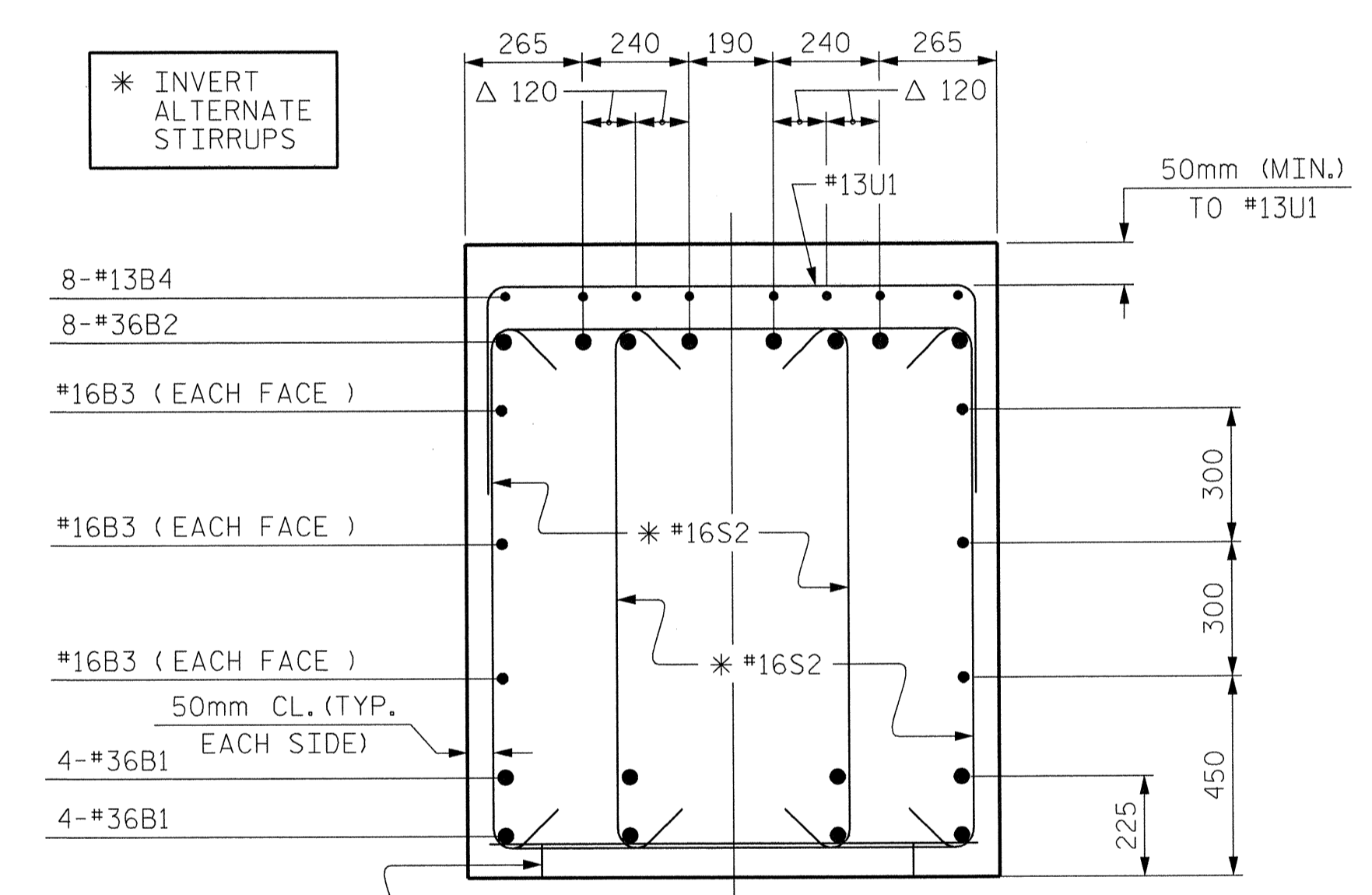


PLAN OF DRILLED PIER  
 REINFORCING STEEL AND DIMENSIONS ARE TYPICAL FOR ALL DRILLED PIERS.



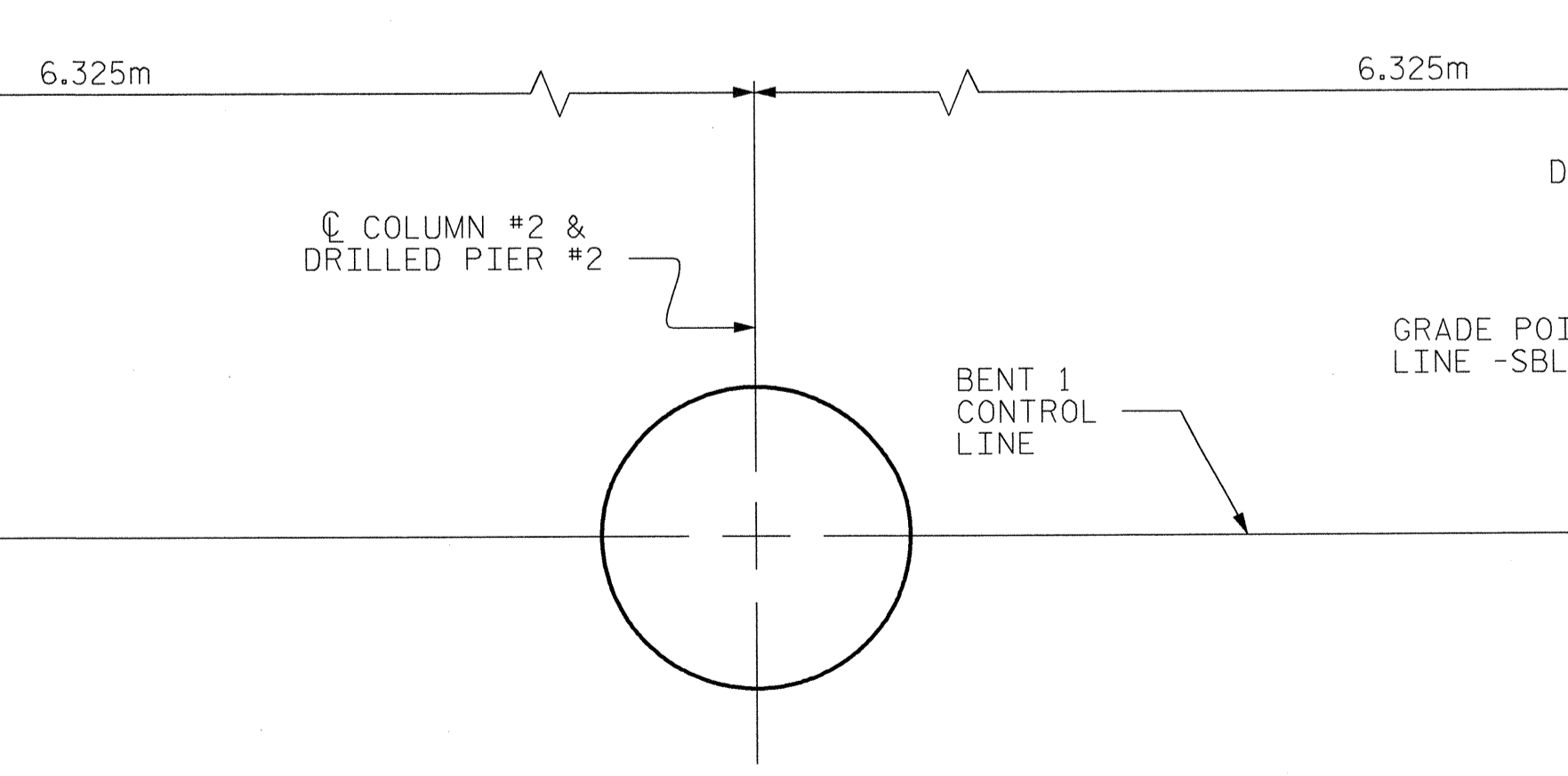
SECTION A-A

THE PLACEMENT OF SOME #32 "B" BARS TYPICAL OF SECTION A-A ARE CONTROLLED BY THE #16S2 BARS IN SECTION B-B.



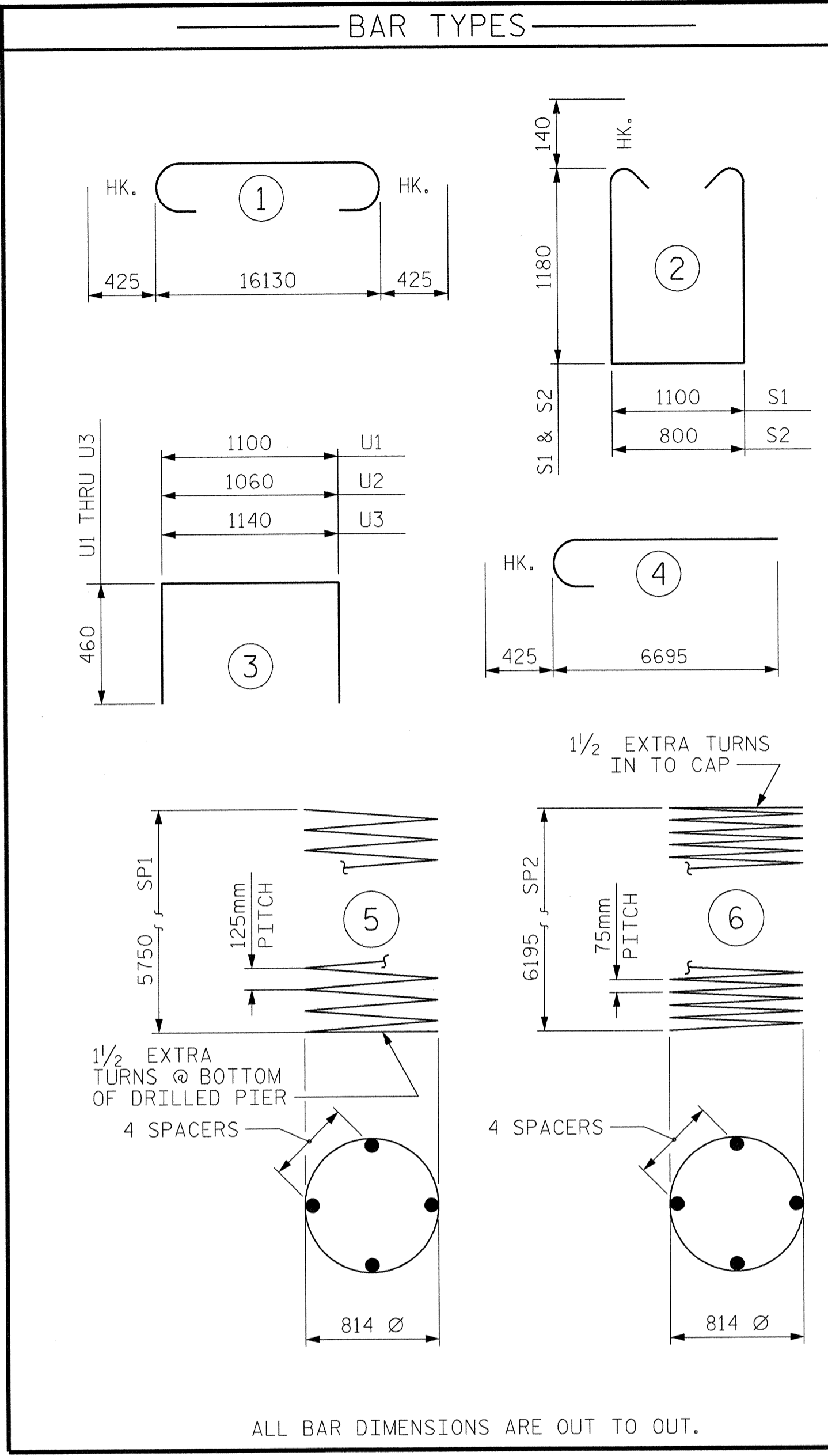
SECTION B-B

Δ ADDITIONAL DIMENSIONS FOR THE PLACEMENT OF #13B4 BARS.

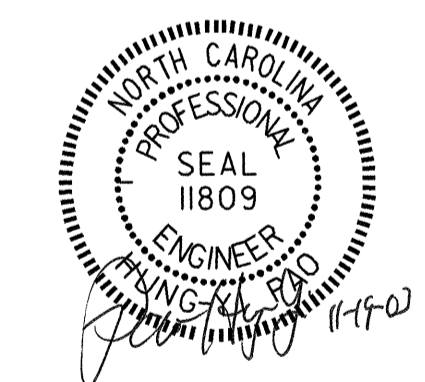


PLAN OF COLUMNS AND DRILLED PIERS

THE CONTRACTOR'S ATTENTION IS CALLED TO THE FACT THAT THE WORK POINT IS OFFSET FROM THE CENTERLINE COLUMN AND DRILLED PIER.



ALL BAR DIMENSIONS ARE OUT TO OUT.



\* THE SP1 SPIRAL REINFORCING STEEL SHALL BE W31 OR D-31 COLD DRAWN WIRE OR #16 PLAIN OR DEFORMED BAR.  
 \*\* THE SP2 SPIRAL REINFORCING STEEL SHALL BE W20 OR D-20 COLD DRAWN WIRE OR #13 PLAIN OR DEFORMED BAR.

PROJECT NO. R-2610A  
 CHATHAM COUNTY  
 STATION: 27+85.488 -L-

SHEET 2 OF 2  
 STATE OF NORTH CAROLINA  
 DEPARTMENT OF TRANSPORTATION  
 RALEIGH  
 SUBSTRUCTURE  
 BENT 1  
 (LEFT LANE BRIDGE)

REVISIONS				SHEET NO.
NO.	BY:	DATE:	NO.	DATE:
1			3	
2			4	

TOTAL SHEETS: 82

Stantec Consulting Services Inc.  
 Suite 300, 801 Jones Franklin Road  
 Raleigh, NC 27606  
 Tel. 919.851.6866  
 Fax. 919.851.7024  
 www.stantec.com

DRAWN BY: M. J. OSTRISHKO DATE: 3-18-03  
 CHECKED BY: H. PAO DATE: 7-10-03